

# ILS RWY 2R (SA CAT I) NASHVILLE INTL (BNA)

LOC/DME I-UQU <b>111.75</b> Chan <b>54 (Y)</b>	APP CRS <b>021°</b>	Rwy Ldg TDZE Apt Elev <b>8000</b> <b>590</b> <b>599</b>
--	------------------------	--

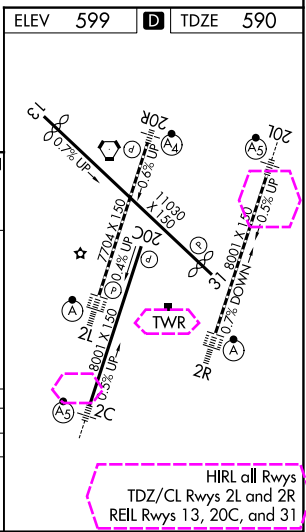
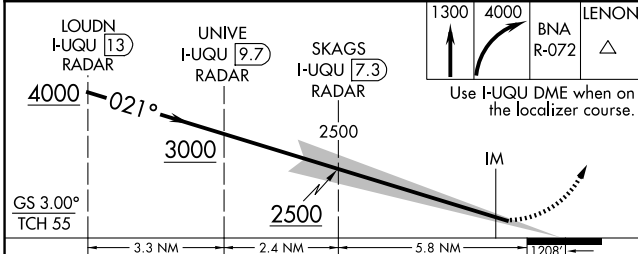
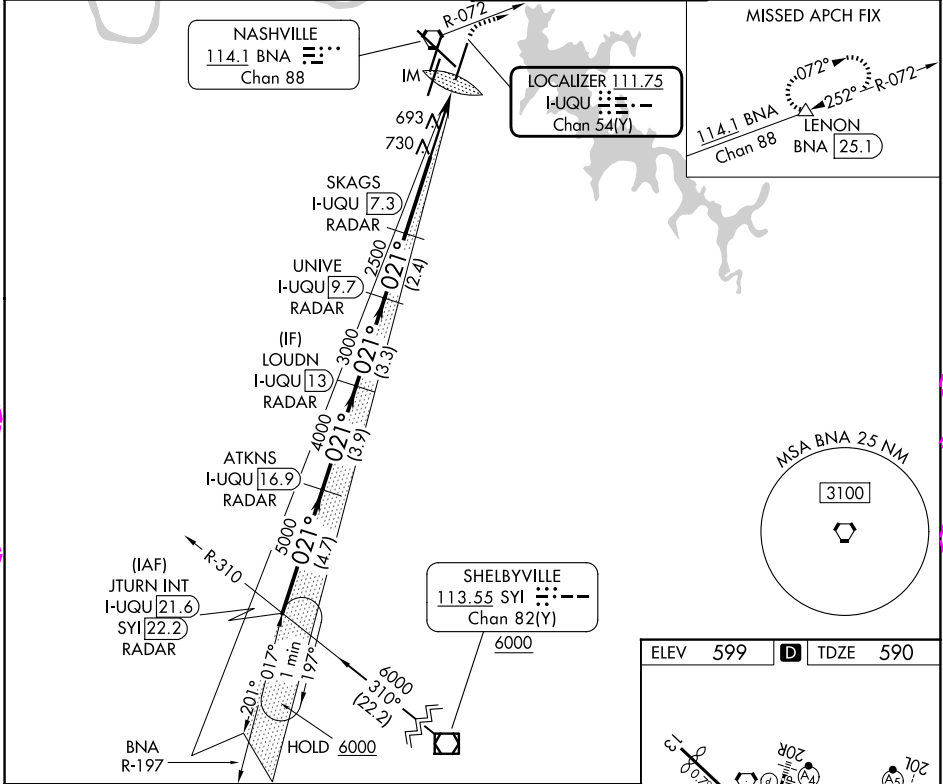
DME required.

Simultaneous approach authorized.  
Requires specific OPSPEC, MSPEC, or LOA approval.

ALSf-2

MISSED APPROACH: Climb to 1300, then climbing right turn to 4000 on BNA VORTAC R-072 to LENON/BNA 25.1 DME and hold.

D-ATIS <b>135.1</b>	NASHVILLE APP CON <b>118.4 360.7</b> (030°-196°) <b>119.35 372.0</b> (197°-029°)	NASHVILLE TOWER <b>118.6 257.8</b>	GND CON <b>121.9 348.6</b>
------------------------	--	---------------------------------------	-------------------------------



CATEGORY	A	B	C	D
S-ILS 2R	RA 121/14 150 DA 740			
<b>SA CATEGORY I ILS - SPECIAL AIRCREW &amp; AIRCRAFT CERTIFICATION REQUIRED</b>				

SE-1, 30 OCT 2025 to 27 NOV 2025

SE-1, 30 OCT 2025 to 27 NOV 2025

