

(GDOGG3.GDOGG) 18088

AL-282 (FAA)

NASHVILLE INTL (BNA)  
NASHVILLE, TENNESSEE

# GDOGG THREE DEPARTURE (RNAV)

D-ATIS 135.1  
CLNC DEL 126.05  
CPDLC  
GND CON  
121.9 348.6  
NASHVILLE TOWER  
118.6 257.8  
NASHVILLE DEP CON  
119.35 372.0

FAPER

15100  
\*2200  
-359°  
(35)

GDOGG

8000  
\*3100  
001°  
(10)

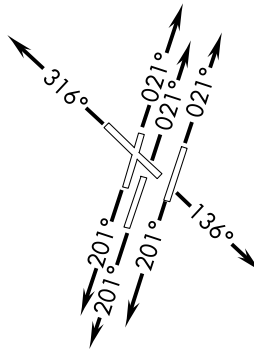
KNNGG

**TOP ALTITUDE:  
4000**

### TAKEOFF MINIMUMS:

Rwys 2C, 2L, 2R, 13, 20L, 20R, 31: Standard with minimum climb of 500' per NM to 1100.  
Rwys 20C, 20R: Standard with minimum climb of 500' per NM to 1300.

- NOTE: DME/DME/IRU or GPS required.
- NOTE: RNAV 1.
- NOTE: Radar required.
- NOTE: For Turbojet aircraft only.
- NOTE: Transponder code will be issued via PDC or Nashville clearance delivery.
- NOTE: If unable to accept climb rates, advise ATC on initial contact.



NOTE: Chart not to scale.

### DEPARTURE ROUTE DESCRIPTION

- TAKEOFF RWYS 2L/C/R: Climb heading 021° or assigned ATC heading, thence....
- TAKEOFF RWY 13: Climb heading 136° or assigned ATC heading, thence....
- TAKEOFF RWYS 20L/C/R: Climb heading 201° or assigned ATC heading, thence....
- TAKEOFF RWY 31: Climb heading 316° or assigned ATC heading, thence....

...expect radar vectors to KNNGG, then on track 001° to GDOGG. Maintain 4000. Expect clearance to filed altitude within five (5) minutes after departure.

FAPER TRANSITION (GDOGG3.FAPER)

# GDOGG THREE DEPARTURE (RNAV)

(GDOGG3.GDOGG) 25JUN15

NASHVILLE, TENNESSEE  
NASHVILLE INTL (BNA)

SE-1, 30 OCT 2025 to 27 NOV 2025

SE-1, 30 OCT 2025 to 27 NOV 2025

(GDOGG4, GDOGG) 25331

AL-282 (FAA)

NASHVILLE INTL (BNA)  
NASHVILLE, TENNESSEE

# GDOGG FOUR DEPARTURE (RNAV)

NASHVILLE DEP CON  
119.35 372.0  
D-ATIS 135.1  
CLNC DEL 126.05  
CPDLC  
GND CON  
121.9 348.6  
NASHVILLE TOWER  
118.6 257.8

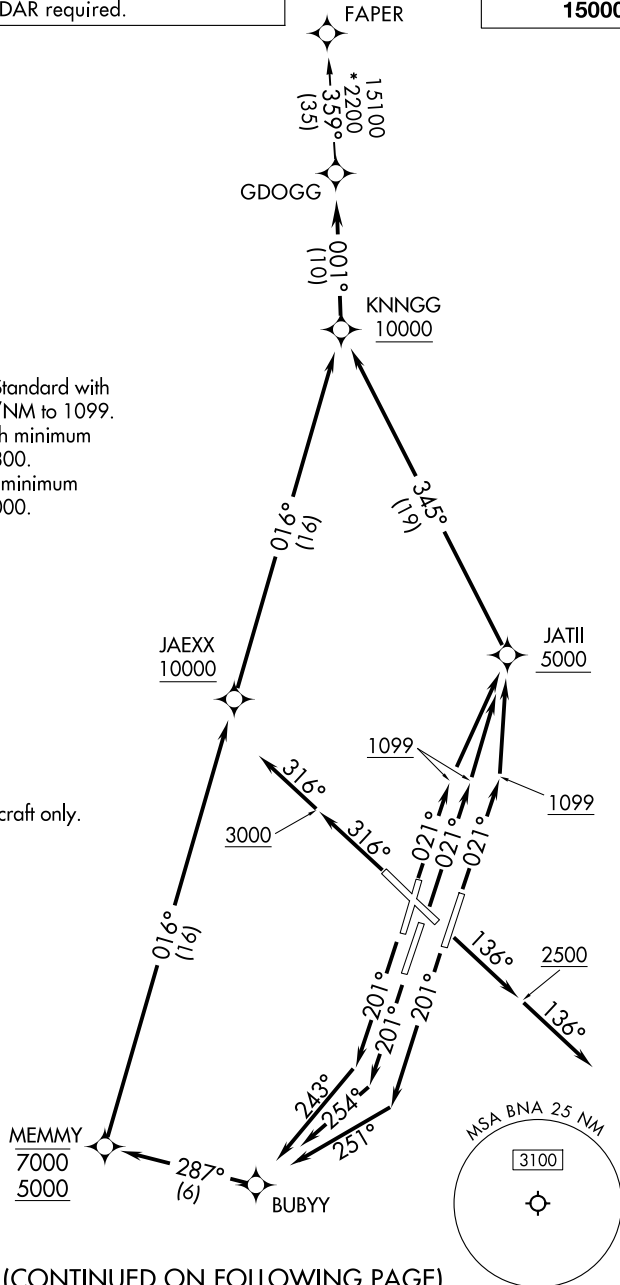
RNAV 1 - DME/DME/IRU or GPS.  
RADAR required.

**TOP ALTITUDE:  
15000**

### TAKEOFF MINIMUMS:

- Rwy 13: Standard.
- Rwys 2L/C/R, 20L/R: Standard with minimum climb of 500'/NM to 1099.
- Rwy 20C: Standard with minimum climb of 500'/NM to 1300.
- Rwy 31: Standard with minimum climb of 250'/NM to 3000.

NOTE: Jet aircraft only.



NOTE: Chart not to scale.

(CONTINUED ON FOLLOWING PAGE)

# GDOGG FOUR DEPARTURE (RNAV)

(GDOGG4, GDOGG) 27NOV25

NASHVILLE, TENNESSEE  
NASHVILLE INTL (BNA)

SE-1, 27 NOV 2025 to 25 DEC 2025

SE-1, 27 NOV 2025 to 25 DEC 2025