

(FLAME3.FLAME) 18088

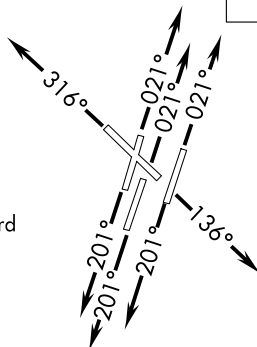
AL-282 (FAA)

NASHVILLE INTL (BNA)  
NASHVILLE, TENNESSEE

# FLAME THREE DEPARTURE (RNAV)

**TOP ALTITUDE:  
4000**

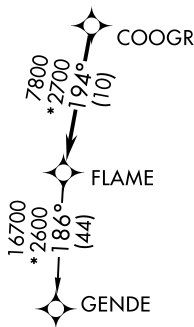
D-ATIS 135.1  
CLNC DEL 126.05  
CPDLC  
GND CON  
121.9 348.6  
NASHVILLE TOWER  
118.6 257.8  
NASHVILLE DEP CON  
118.4 360.7



### TAKEOFF MINIMUMS:

Rwys 2C, 2L, 2R, 13, 20C, 20L, 20R, 31: Standard with minimum climb of 500' per NM to 1100.

- NOTE: DME/DME/IRU or GPS required.
- NOTE: RNAV 1.
- NOTE: Radar required.
- NOTE: For Turbojet aircraft only.
- NOTE: Transponder code will be issued via PDC or Nashville clearance delivery.
- NOTE: If unable to accept climb rates, advise ATC on initial contact.



NOTE: Chart not to scale.

### DEPARTURE ROUTE DESCRIPTION

- TAKEOFF RWYS 2L/C/R: Climb heading 021° or assigned ATC heading, thence....
- TAKEOFF RWY 13: Climb heading 136° or assigned ATC heading, thence....
- TAKEOFF RWYS 20L/C/R: Climb heading 201° or assigned ATC heading, thence....
- TAKEOFF RWY 31: Climb heading 316° or assigned ATC heading, thence....

....expect radar vectors to COOGR, then on track 194° to FLAME. Maintain 4000, expect clearance to filed altitude within five (5) minutes after departure.

GENDE TRANSITION (FLAME3.GENDE)

# FLAME THREE DEPARTURE (RNAV)

(FLAME3.FLAME) 25JUN15

NASHVILLE, TENNESSEE  
NASHVILLE INTL (BNA)

SE-1, 30 OCT 2025 to 27 NOV 2025

SE-1, 30 OCT 2025 to 27 NOV 2025

(FLAME4.FLAME) 25331

AL-282 (FAA)

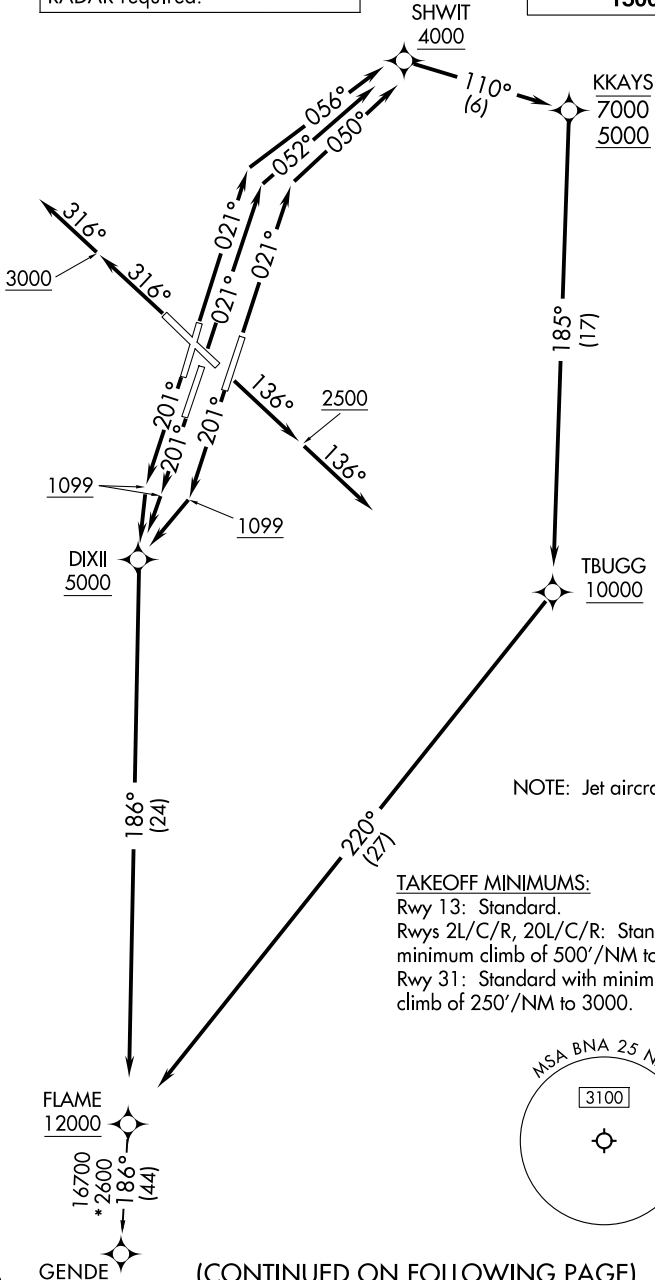
NASHVILLE INTL (BNA)  
NASHVILLE, TENNESSEE

# FLAME FOUR DEPARTURE (RNAV)

NASHVILLE DEP CON  
118.4 360.7  
D-ATIS 135.1  
CLNC DEL 126.05  
CPDLC  
GND CON  
121.9 348.6  
NASHVILLE TOWER  
118.6 257.8

RNAV 1 - DME/DME/IRU or GPS.  
RADAR required.

**TOP ALTITUDE:**  
**15000**



NOTE: Jet aircraft only.

TAKEOFF MINIMUMS:

Rwy 13: Standard.  
Rwys 2L/C/R, 20L/C/R: Standard with minimum climb of 500'/NM to 1099.  
Rwy 31: Standard with minimum climb of 250'/NM to 3000.

NOTE: Chart not to scale.

(CONTINUED ON FOLLOWING PAGE)

# FLAME FOUR DEPARTURE (RNAV)

(FLAME4.FLAME) 27NOV25

NASHVILLE, TENNESSEE  
NASHVILLE INTL (BNA)

SE-1, 27 NOV 2025 to 25 DEC 2025

SE-1, 27 NOV 2025 to 25 DEC 2025