

(DRURY3.DRURY) 18088

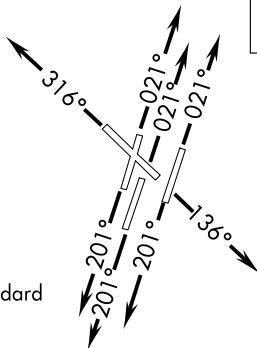
AL-282 (FAA)

NASHVILLE INTL (BNA)
NASHVILLE, TENNESSEE

DRURY THREE DEPARTURE (RNAV)

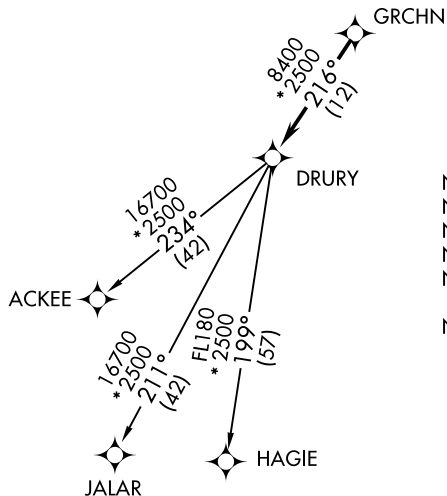
D-ATIS 135.1
CLNC DEL 126.05
CPDLC
GND CON
121.9 348.6
NASHVILLE TOWER
118.6 257.8
NASHVILLE DEP CON
119.35 372.0

**TOP ALTITUDE:
4000**



TAKEOFF MINIMUMS:

Rwys 2C, 2L, 2R, 13, 20C, 20L, 20R, 31: Standard with minimum climb of 500' per NM to 1100.



- NOTE: DME/DME/IRU or GPS required.
- NOTE: RNAV 1.
- NOTE: Radar required.
- NOTE: For Turbojet aircraft only.
- NOTE: Transponder code will be issued via PDC or Nashville clearance delivery.
- NOTE: If unable to accept climb rates, advise ATC on initial contact.

NOTE: Chart not to scale.



DEPARTURE ROUTE DESCRIPTION

- TAKEOFF RWYS 2L/C/R: Climb heading 021° or assigned ATC heading, thence....
- TAKEOFF RWY 13: Climb heading 136° or assigned ATC heading, thence....
- TAKEOFF RWYS 20L/C/R: Climb heading 201° or assigned ATC heading, thence....
- TAKEOFF RWY 31: Climb heading 316° or assigned ATC heading, thence....

...expect radar vectors to GRCHN, then on track 216° to DRURY. Maintain 4000. Expect clearance to filed altitude within five (5) minutes after departure.

- ACKEE TRANSITION (DRURY3.ACKEE)
- HAGIE TRANSITION (DRURY3.HAGIE)
- JALAR TRANSITION (DRURY3.JALAR)

DRURY THREE DEPARTURE (RNAV)

(DRURY3.DRURY) 25JUN15

NASHVILLE, TENNESSEE
NASHVILLE INTL (BNA)

SE-1, 30 OCT 2025 to 27 NOV 2025

SE-1, 30 OCT 2025 to 27 NOV 2025

(DRURY4.DRURY) 25331

AL-282 (FAA)

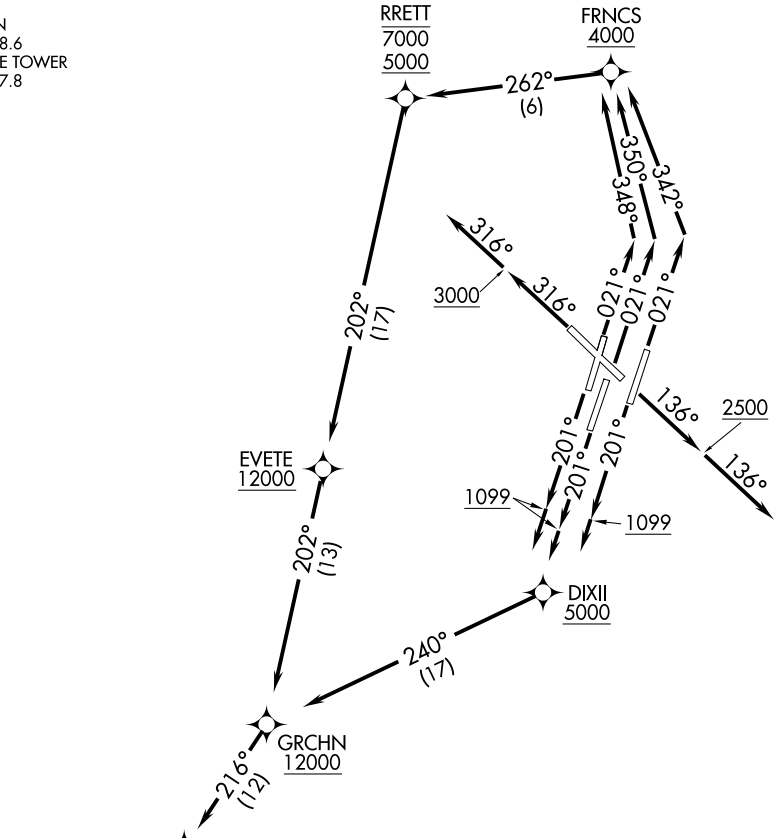
NASHVILLE INTL (BNA)
NASHVILLE, TENNESSEE

DRURY FOUR DEPARTURE (RNAV)

NASHVILLE DEP CON
119.35 372.0
D-ATIS 135.1
CLNC DEL 126.05
CPDLC
GND CON
121.9 348.6
NASHVILLE TOWER
118.6 257.8

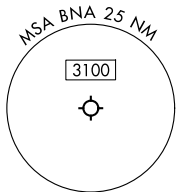
RNAV 1 - DME/DME/IRU or GPS.
RADAR required.

**TOP ALTITUDE:
15000**



TAKEOFF MINIMUMS:
 Rwy 13: Standard.
 Rws 2L/C/R, 20L/C/R: Standard with minimum climb of 500'/NM to 1099.
 Rwy 31: Standard with minimum climb of 250'/NM to 3000.

NOTE: Jet aircraft only.



NOTE: Chart not to scale.

(CONTINUED ON FOLLOWING PAGE)

DRURY FOUR DEPARTURE (RNAV)

(DRURY4.DRURY) 27NOV25

NASHVILLE, TENNESSEE
NASHVILLE INTL (BNA)

SE-1, 27 NOV 2025 to 25 DEC 2025

SE-1, 27 NOV 2025 to 25 DEC 2025