

| | | |
|--|------------------------|--|
| WAAS CH 61123 W09A | APP CRS 090° | Rwy Idg 10002 TDZE 587 Apt Elev 590 |
|--|------------------------|--|

RNAV (GPS) RWY 9

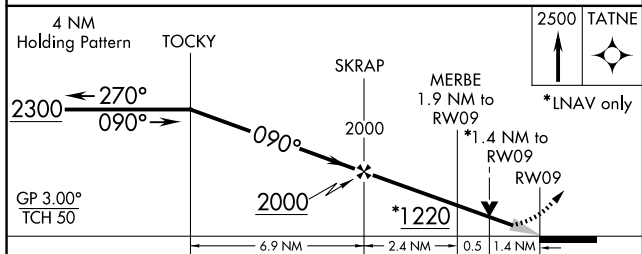
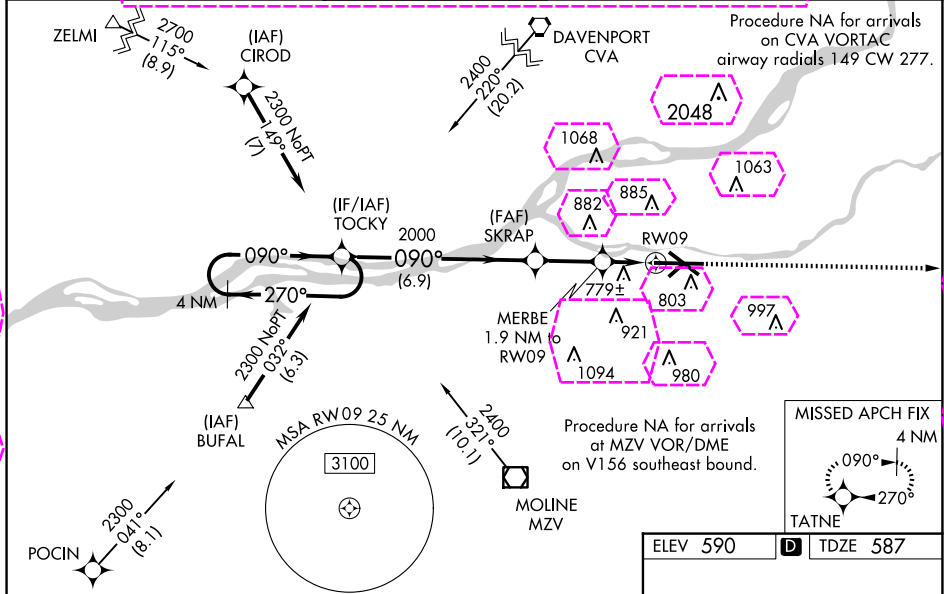
QUAD CITIES INTL (MLI)

⚠ Circling to Rwy 5 NA at night. Baro-VNAV NA when using Davenport altimeter setting. For uncompensated Baro-VNAV systems, LNAV/VNAV NA below -26°C (-14°F) or above 40°C (104°F). DME/DME RNP-0.3 NA. VDP NA when using Davenport altimeter setting. When local altimeter setting not received, use Davenport altimeter setting and increase LPV DA to 825 feet and LNAV/VNAV DA to 1160 feet and LNAV/VNAV visibility all Cats 1/2 SM; increase all MDA 60 feet and LNAV visibility Cats C and D 1/2 SM. Circling Cats C and D 1/2 SM. For inoperative ALS, increase LNAV visibility Cats C and D to 1 1/2 SM. When using Davenport altimeter increase LNAV/VNAV visibility all Cats to 2 SM, LNAV visibility Cats C and D to 1 1/2 SM.
**** RVR 1800 authorized with use of FD or AP or HUD to DA.**

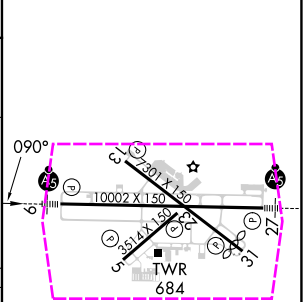


MISSED APPROACH:
Climb to 2500 direct TATNE and hold.

| | | | | | |
|----------------------|--|---|-------------------------|---------------------------|-------------------------|
| ATIS 121.2 | QUAD CITY APP CON * 125.95 257.8 | QUAD CITY TOWER * 119.4 (CTAF) 269.55 | GND CON 121.9 | CLNC DEL 124.05 | UNICOM 122.95 |
|----------------------|--|---|-------------------------|---------------------------|-------------------------|



| | |
|----------|-------------------|
| ELEV 590 | D TDZE 587 |
|----------|-------------------|



| CATEGORY | A | B | C | D |
|--------------|-----------------------|-----------------------|-----------------------|-------------------------------|
| LPV DA ** | 787/24 | | 200 (200-1/2) | |
| LNAV/VNAV DA | 1122-1 3/8 | | 535 (600-1 1/8) | |
| LNAV MDA | 1060/24 | 473 (500-1/2) | 1060/50 | 473 (500-1) |
| CIRCLING | 1140-1 550 (600-1) | 1200-1 610 (700-1) | 1320-2 730 (800-2) | 1420-2 3/4 830 (900-2 3/4) |

MIRL Rwy 5-23
 REIL Rwy 13 and 31
 HIRL Rwy 9-27 and 13-31

EC-3, 30 OCT 2025 to 27 NOV 2025

EC-3, 30 OCT 2025 to 27 NOV 2025

| | | |
|--|------------------------|--|
| WAAS CH 61123 W09A | APP CRS 090° | Rwy Ldg 10002 TDZE 587 Apt Elev 590 |
|--|------------------------|--|

RNAV (GPS) RWY 9

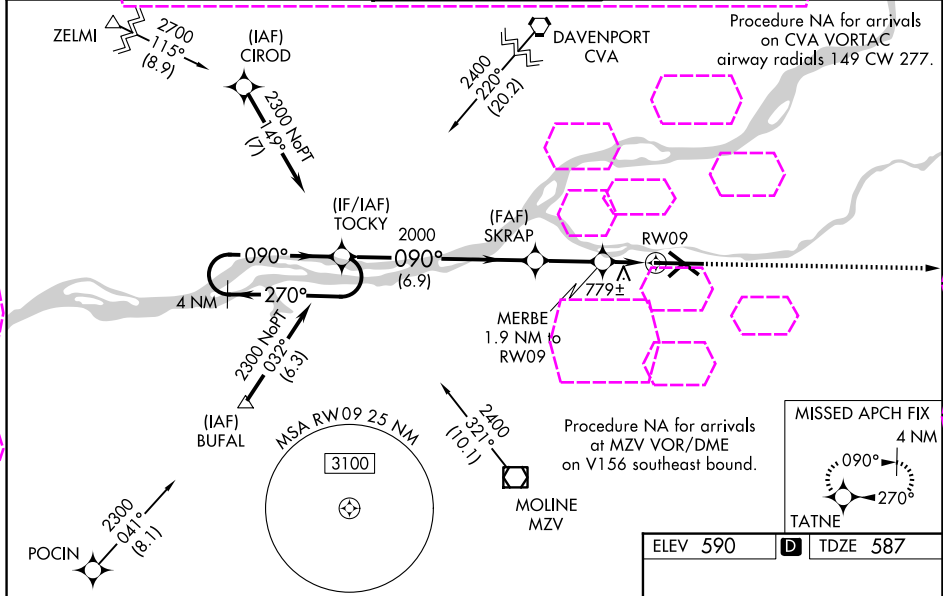
QUAD CITIES INTL (MLI)

⚠ Circling to Rwy 5 NA at night. Baro-VNAV NA when using Davenport altimeter setting. For uncompensated Baro-VNAV systems, LNAV/VNAV NA below -26°C (-14°F) or above 40°C (104°F). DME/DME RNP-0.3 NA. VDP NA when using Davenport altimeter setting. When local altimeter setting not received, use Davenport altimeter setting and increase LPV DA to 825 feet and LNAV/VNAV DA to 1160 feet and LNAV/VNAV visibility all Cats 1/8 SM; increase all MDA 60 feet and LNAV visibility Cats C and D 1/8 SM, Circling Cats C and D 1/4 SM. For inoperative ALS, increase LNAV visibility Cats C and D to 1 3/8 SM. When using Davenport altimeter increase LNAV/VNAV visibility all Cats to 2 SM, LNAV visibility Cats C and D to 1 3/8 SM.
**** RVR 1800 authorized with use of FD or AP or HUD to DA.**



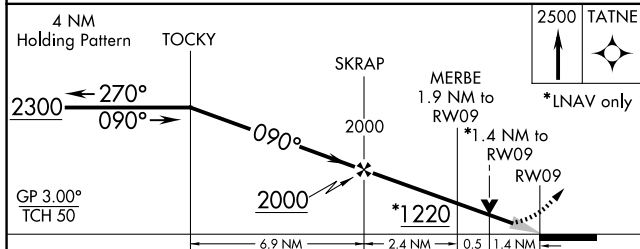
MISSED APPROACH:
Climb to 2500 direct TATNE and hold.

| | | | | |
|----------------------|--|---|-------------------------|-------------------------|
| ATIS 121.2 | QUAD CITY APP CON * 125.95 257.8 | QUAD CITY TOWER * 119.4 (CTAF) 269.55 | GND CON 121.9 | UNICOM 122.95 |
|----------------------|--|---|-------------------------|-------------------------|

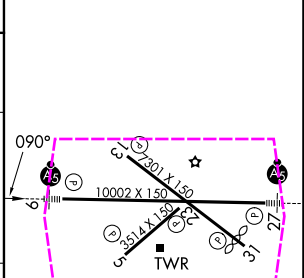


EC-3 127 NOV 2025 to 25 DEC 2025

EC-3 27 NOV 2025 to 25 DEC 2025



| | |
|----------|-------------------|
| ELEV 590 | D TDZE 587 |
|----------|-------------------|



| CATEGORY | A | B | C | D |
|--------------|-----------------------|-----------------------|-----------------------|-------------------------------|
| LPV DA** | 787/24 | | 200 (200-1/2) | |
| LNAV/VNAV DA | 1122-1 3/8 | | 535 (600-1 3/8) | |
| LNAV MDA | 1060/24 | 473 (500-1/2) | 1060/50 | 473 (500-1) |
| CIRCLING | 1140-1 550 (600-1) | 1200-1 610 (700-1) | 1320-2 730 (800-2) | 1420-2 3/4 830 (900-2 3/4) |