

WAAS CH <b>42515</b> <b>W13A</b>	APP CRS <b>126°</b>	Rwy Idg <b>7032</b> TDZE <b>590</b> Apt Elev <b>590</b>
--	------------------------	---

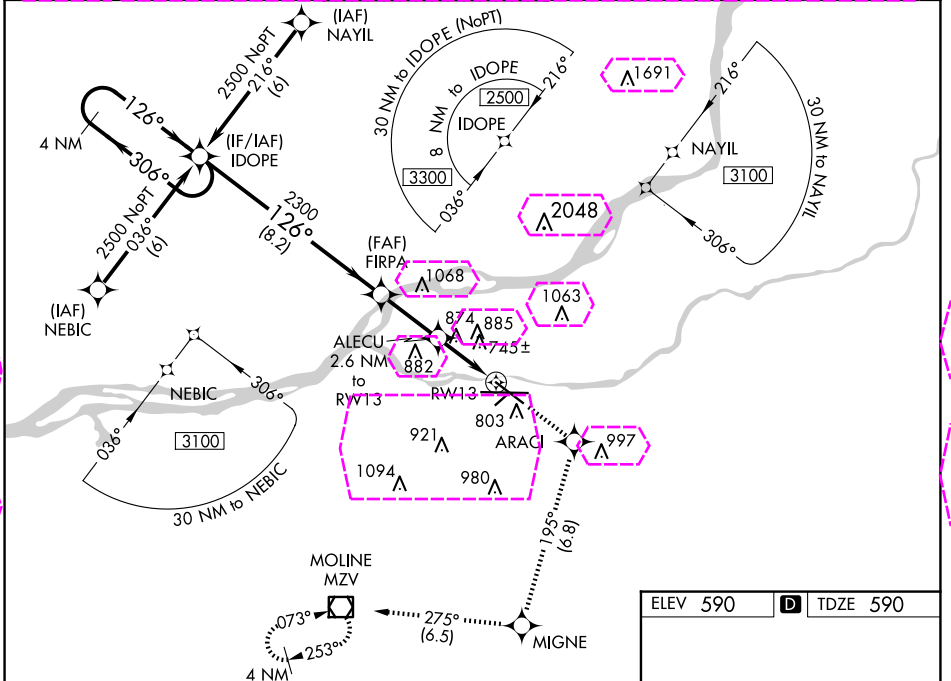
# RNAV (GPS) RWY 13

QUAD CITIES INTL (MLI)

▼ Circling to Rwy 5 NA at night. For uncompensated Baro-VNAV systems, LNAV/VNAV NA below -16°C (4°F) or above 47°C (116°F). DME/DME RNP-0.3 NA. When local altimeter setting not received, use Davenport altimeter setting and increase LPV DA to 955 feet, LNAV/VNAV DA to 1339 feet and all MDA 60 feet; increase LPV all Cats, LNAV/VNAV all Cats, LNAV Cats C and D, and Circling Cats C and D visibility ¼ SM. Rwy 13 helicopter reduction below ¾ SM NA. VDP and Baro-VNAV NA when using Davenport altimeter setting.

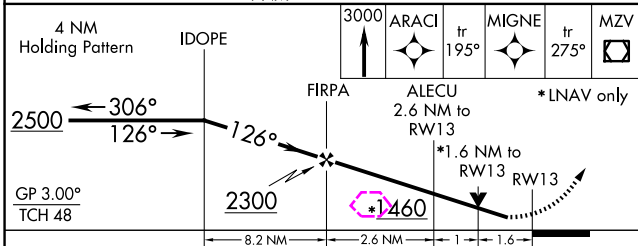
MISSED APPROACH: Climb to 3000 direct ARACI and on track 195° to MIGNE and on track 275° to MZV VOR/DME and hold.

ATIS <b>121.2</b>	QUAD CITY APP CON * <b>125.95 257.8</b>	QUAD CITY TOWER * <b>119.4(CTAF) 269.55</b>	GND CON <b>121.9</b>	CLNC DEL <b>124.05</b>	UNICOM <b>122.95</b>
----------------------	--	--	-------------------------	---------------------------	-------------------------

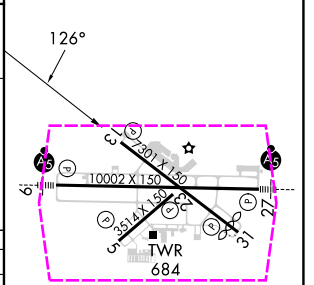


EC-3 30 OCT 2025 to 27 NOV 2025

EC-3 30 OCT 2025 to 27 NOV 2025



ELEV 590	<b>D</b> TDZE 590
----------	-------------------



CATEGORY	A	B	C	D
LPV DA	908-1 318 (400-1)			
LNAV/VNAV DA	1292-2½ 702 (800-2½)			
LNAV MDA	1140-1 550 (600-1)	1140-1½ 550 (600-1½)	1140-1¾ 550 (600-1¾)	1140-2 550 (600-2)
CIRCLING	1140-1 550 (600-1)	1200-1 610 (700-1)	1320-2 730 (800-2)	1420-2¾ 830 (900-2¾)

HIRL Rwy 9-27 and 13-31  
MIRL Rwy 5-23  
REIL Rwy 13 and 31

WAAS CH <b>42515</b> <b>W13A</b>	APP CRS <b>126°</b>	Rwy Ldg <b>7032</b> TDZE <b>590</b> Apt Elev <b>590</b>
--	------------------------	---

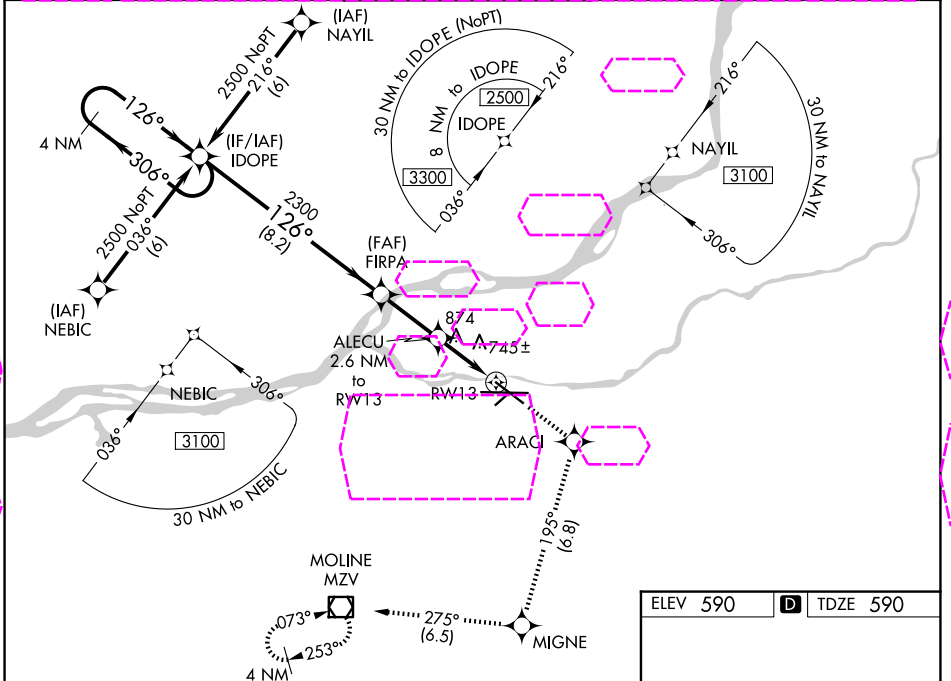
# RNAV (GPS) RWY 13

QUAD CITIES INTL (MLI)

▼ Circling to Rwy 5 NA at night. For uncompensated Baro-VNAV systems, LNAV/VNAV NA below -16°C (4°F) or above 47°C (116°F). DME/DME RNP-0.3 NA. When local altimeter setting not received, use Davenport altimeter setting and increase LPV DA to 955 feet, LNAV/VNAV DA to 1339 feet and all MDA 60 feet; increase LPV all Cats, LNAV/VNAV all Cats, LNAV Cats C and D, and Circling Cats C and D visibility ¼ SM. Rwy 13 helicopter reduction below ¾ SM NA. VDP and Baro-VNAV NA when using Davenport altimeter setting.

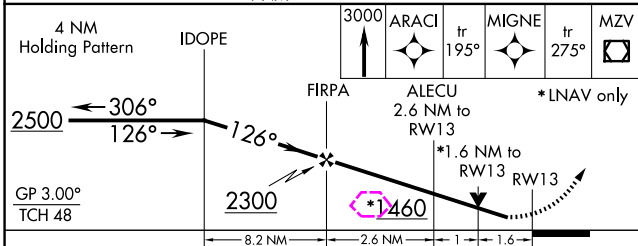
MISSED APPROACH: Climb to 3000 direct ARACI and on track 195° to MIGNE and on track 275° to MZV VOR/DME and hold.

ATIS <b>121.2</b>	QUAD CITY APP CON * <b>125.95 257.8</b>	QUAD CITY TOWER * <b>119.4(CTAF) 269.55</b>	GND CON <b>121.9</b>	UNICOM <b>122.95</b>
----------------------	--	--	-------------------------	-------------------------

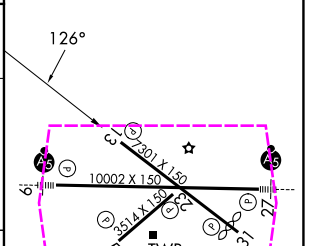


EC-3 27 NOV 2025 to 25 DEC 2025

EC-3 27 NOV 2025 to 25 DEC 2025



ELEV 590	<b>D</b> TDZE 590
----------	-------------------



CATEGORY	A	B	C	D
LPV DA	908-1 318 (400-1)			
LNAV/VNAV DA	1292-2½ 702 (800-2½)			
LNAV MDA	1140-1 550 (600-1)	1140-1½ 550 (600-1½)	1140-1¾ 550 (600-1¾)	1140-2 550 (600-2)
CIRCLING	1140-1 550 (600-1)	1200-1 610 (700-1)	1320-2 730 (800-2)	1420-2¾ 830 (900-2¾)

HIRL Rwy 9-27 and 13-31  
MIRL Rwy 5-23  
REIL Rwy 13 and 31