



MOLINE, ILLINOIS

AL-269 (FAA)

25331

LOC/DME I-MLI <b>110.5</b> Chan <b>42</b>	APP CRS <b>090°</b>	Rwy Ldg <b>1000Z</b> TDZE <b>587</b> Apt Elev <b>590</b>
---	------------------------	--

# ILS or LOC RWY 9

QUAD CITIES INTL (MLI)

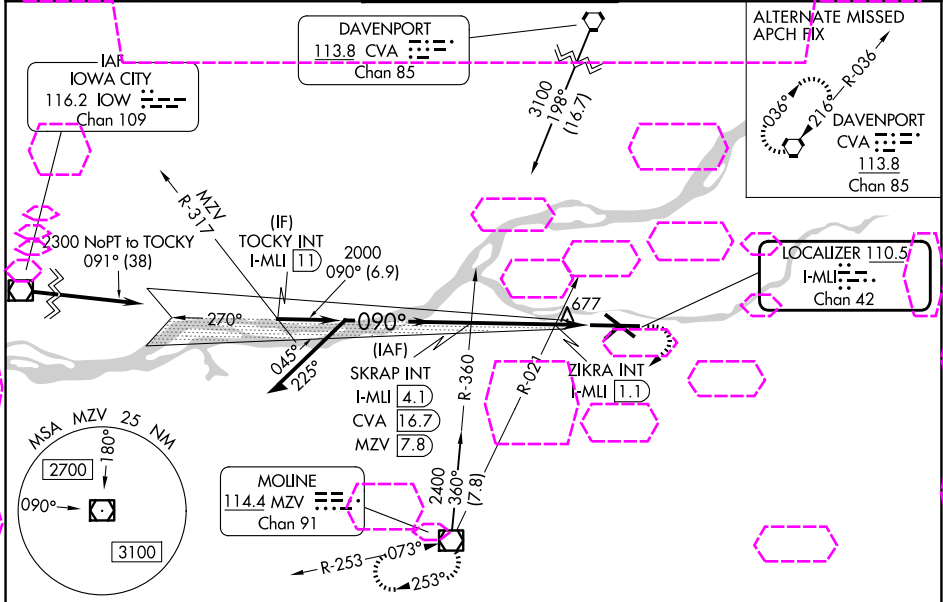
DME required for procedure entry at CVA VORTAC and MZV VOR/DME.

**⚠** Circling to Rwy 5 NA at night. For inop ALS, increase S-LOC 9 Cats C and D visibility to 1 3/4 SM. ZIKRA Minimums: For inop ALS, increase S-LOC Cats C and D visibility to 1 SM.  
# RVR 1800 authorized with use of FD or AP or HUD to DA.



MISSED APPROACH: Climb to 1100 then climbing right turn to 2300 direct MZV VOR/DME and hold.

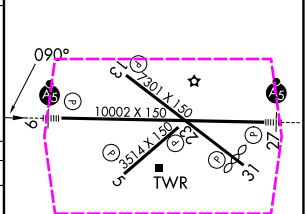
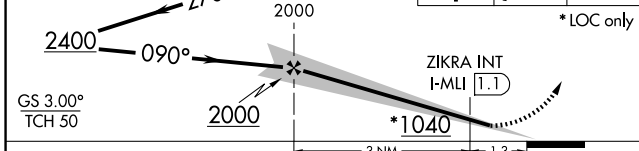
ATIS <b>121.2</b>	QUAD CITY APP CON * <b>125.95 257.8</b>	QUAD CITY TOWER * <b>119.4(CTAF) 269.55</b>	GND CON <b>121.9</b>	UNICOM <b>122.95</b>
----------------------	--	--	-------------------------	-------------------------



EC-3 127 NOV 2025 to 25 DEC 2025

EC-3 27 NOV 2025 to 25 DEC 2025

Remain within 10 NM	SKRAP INT I-MLI 4.1	1100	2300	MZV	ELEV 590	<b>D</b> TDZE 587
---------------------	---------------------	------	------	-----	----------	-------------------



CATEGORY	A	B	C	D
S-ILS 9#	787/24 200 (200-1/2)			
S-LOC 9	1040/24	453 (500-1/2)	1040/50	453 (500-1)
CIRCLING	1140-1 550 (600-1)	1200-1 610 (700-1)	1320-2 730 (800-2)	1420-2 3/4 830 (900-2 3/4)
ZIKRA MINIMUMS (Dual VOR receivers or DME required)				
S-LOC 9	940/24	353 (400-1/2)	940/35	353 (400-3/4)
CIRCLING	1140-1 550 (600-1)	1200-1 610 (700-1)	1320-2 730 (800-2)	1420-2 3/4 830 (900-2 3/4)

MIRL Rwy 5-23  
REIL Rws 13 and 31  
HIRL Rws 9-27 and 13-31  
FAF to MAP 4.3 NM

Knots	60	90	120	150	180
Min:Sec	4:18	2:52	2:09	1:43	1:26

MOLINE, ILLINOIS  
Amdt 31E 09SEP21

41°27'N-90°30'W

# QUAD CITIES INTL (MLI)

## ILS or LOC RWY 9