

MOLINE, ILLINOIS

AL-269 (FAA)

23222

LOC/DME I-GEQ 110.5 Chan 42	APP CRS 270°	Rwy Idg 10002 TDZE 581 Apt Elev 590
---	------------------------	--

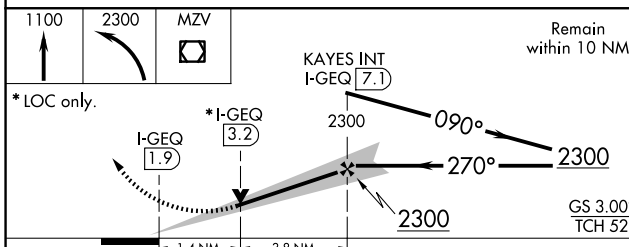
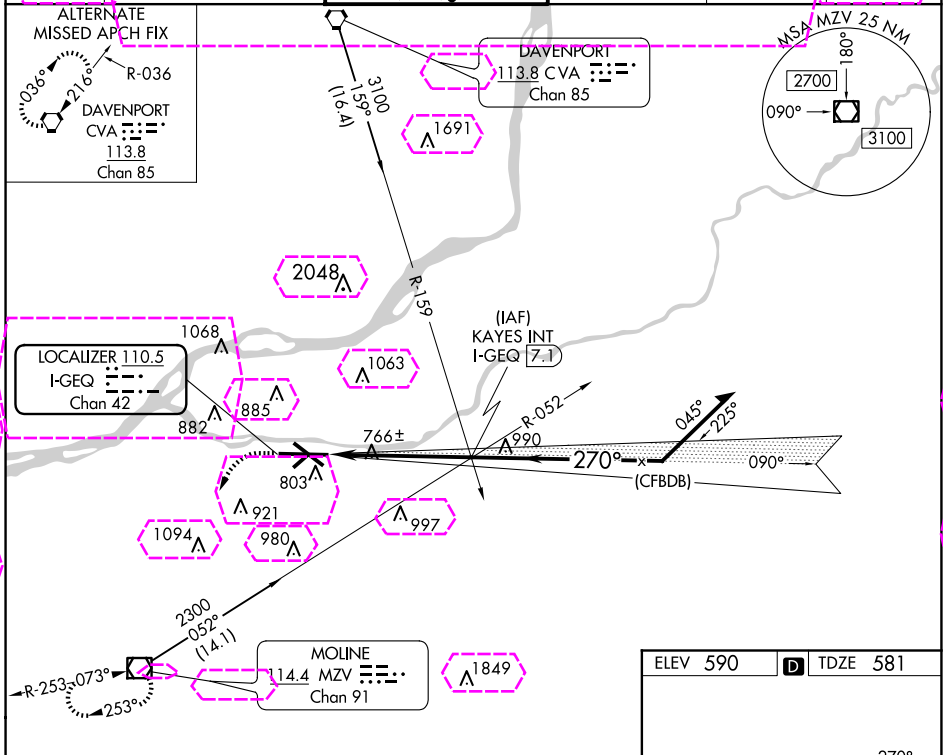
ILS or LOC RWY 27

QUAD CITIES INTL (MLI)

⚠ Circling to Rwy 5 NA at night. When local altimeter setting not received, use Davenport altimeter setting and increase DA to 828 feet and all MDA 60 feet, increase S-LOC-27 and Circling Cats C/D visibility ¼ SM. # RVR 1800 authorized with use of FD or AP or HUD to DA.

MALS MISSED APPROACH: Climb to 1100, then climbing left turn to 2300 direct MZV VOR/DMF and hold.

ATIS 121.2	QUAD CITY APP CON * 125.95 257.8	QUAD CITY TOWER * 119.4 (CTAF) 0 269.55	GND CON 121.9	CLNC DEL 124.05	UNICOM 122.95
----------------------	--	---	-------------------------	---------------------------	-------------------------



ELEV 590	TDZE 581
----------	----------

HIRL Rwy 9-27 and 13-31
MIRL Rwy 5-23
REIL Rwy 13 and 31

FAF to MAP 5.2 NM

Knots	60	90	120	150	180
Min:Sec	5:12	3:28	2:36	2:05	1:44

CATEGORY	A	B	C	D
S-ILS 27#	781/24 200 (200-½)			
S-LOC 27	1060/24 479 (500-½)	1060/40 479 (500-¾)	1060/50 479 (500-1)	
CIRCLING	1140-1 550 (600-1)	1200-1 610 (700-1)	1320-2 730 (800-2)	1420-2¾ 830 (900-2¾)

MOLINE, ILLINOIS
Amdt 2C 09SEP21

41°27'N-90°30'W

QUAD CITIES INTL (MLI)

ILS or LOC RWY 27

EC-3, 30 OCT 2025 to 27 NOV 2025

EC-3, 30 OCT 2025 to 27 NOV 2025

MOLINE, ILLINOIS

AL-269 (FAA)

25331

LOC/DME I-GEQ 110.5 Chan 42	APP CRS 270°	Rwy Ldg 10002 TDZE 581 Apt Elev 590
---	------------------------	--

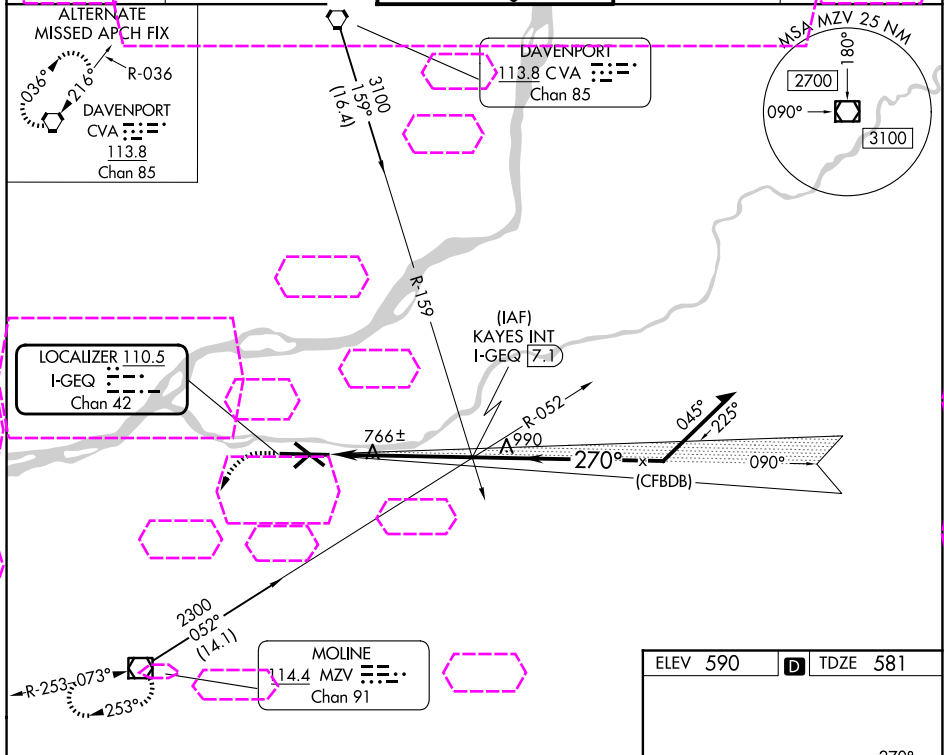
ILS or LOC RWY 27

QUAD CITIES INTL (MLI)

⚠ Circling to Rwy 5 NA at night. When local altimeter setting not received, use Davenport altimeter setting and increase DA to 828 feet and all MDA 60 feet, increase S-LOC-27 and Circling Cats C/D visibility ¼ SM. # RVR 1800 authorized with use of FD or AP or HUD to DA.

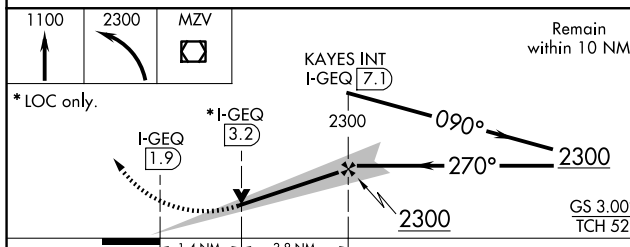
MALSR MISSED APPROACH: Climb to 1100, then climbing left turn to 2300 direct MZV VOR/DME and hold.

ATIS 121.2	QUAD CITY APP CON ★ 125.95 257.8	QUAD CITY TOWER ★ 119.4 (CTAF) 269.55	GND CON 121.9	UNICOM 122.95
----------------------	--	---	-------------------------	-------------------------



EC-3 127 NOV 2025 to 25 DEC 2025

EC-3 27 NOV 2025 to 25 DEC 2025



ELEV 590	TDZE 581
----------	----------

270°
10002 X 150
3014 X 150
TWR
31

HIRL Rws 9-27 and 13-31
MIRL Rwy 5-23
REIL Rws 13 and 31
FAF to MAP 5.2 NM
Knots: 60 90 120 150 180
Min:Sec: 5:12 3:28 2:36 2:05 1:44

CATEGORY	A	B	C	D
S-ILS 27#	781/24 200 (200-½)			
S-LOC 27	1060/24 479 (500-½)	1060/40 479 (500-¾)	1060/50 479 (500-1)	
CIRCLING	1140-1 550 (600-1)	1200-1 610 (700-1)	1320-2 730 (800-2)	1420-2¾ 830 (900-2¾)

MOLINE, ILLINOIS
Amdt 2C 09SEP21

41°27'N-90°30'W

QUAD CITIES INTL (MLI)

ILS or LOC RWY 27