

ST PAUL, MINNESOTA

AL-263 (FAA)

24249

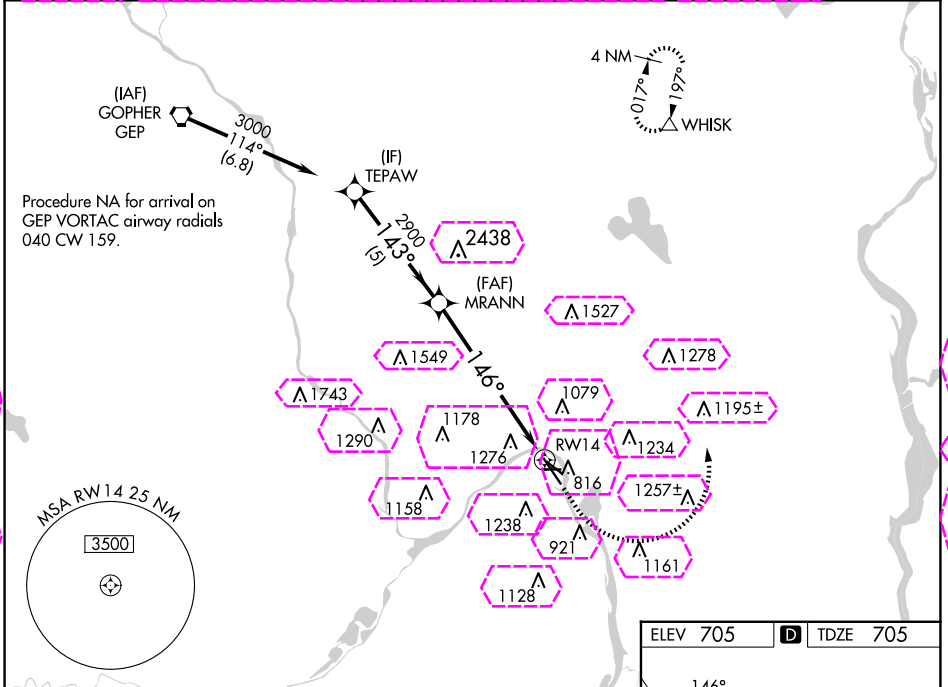
WAAS CH 62828 W14A	APP CRS 146°	Rwy ldg TDZE Apt Elev	6148 705 705
--	------------------------	-----------------------------	---

RNAV (GPS) RWY 14

ST PAUL DOWNTOWN HOLMAN FLD (STP)

	For uncompensated Baro-VNAV systems, LNAV/VNAV NA below -21°C (-5°F) or above 54°C (130°F). Rwy 14 helicopter visibility reduction below 3/4 SM NA. DME/DME RNP-0.3 NA. For inop MALS, increase LNAV Cats C and D to 2 1/2 SM.	MALS 	MISSED APPROACH: (Do not exceed 250K until WHISK. Climb to 1700 then climbing left turn to 3000 direct WHISK and hold.
--	--	----------	--

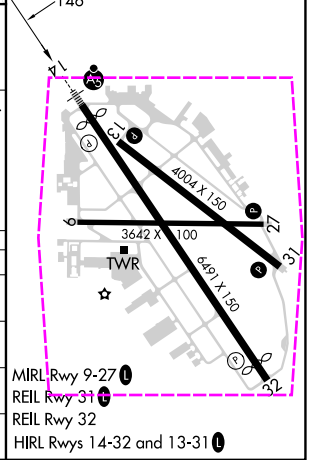
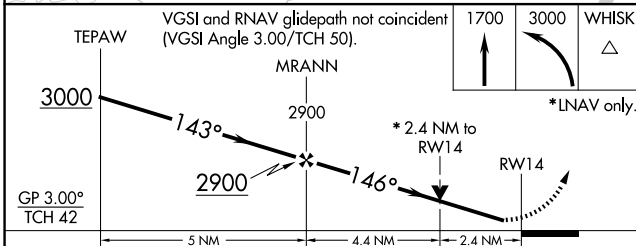
ATIS 118.35	MINNEAPOLIS APP CON 121.2 335.65	ST. PAUL TOWER ★ 119.1 (CTAF) 257.8	GND CON 121.675	CLNC DEL 121.675	UNICOM 122.95
-----------------------	--	---	---------------------------	----------------------------	-------------------------



NC-1, 30 OCT 2025 to 27 NOV 2025

NC-1, 30 OCT 2025 to 27 NOV 2025

ELEV 705	D TDZE 705
----------	-------------------



CATEGORY	A	B	C	D
LPV DA	955/40		250 (300-3/4)	
LNAV/VNAV DA	1511-2 1/2		806 (900-2 1/2)	
LNAV MDA	1520/40 815 (900-3/4)		1520-1 7/8 815 (900-1 7/8)	
C CIRCLING	1580-1 1/4 875 (900-1 1/4)		1580-2 1/2 875 (900-2 1/2)	

MIRL Rwy 9-27
 REIL Rwy 31
 REIL Rwy 32
 HIRL Rlys 14-32 and 13-31

ST PAUL, MINNESOTA
 Amdt 1B 17AUG17

44°56'N-93°04'W

ST PAUL DOWNTOWN HOLMAN FLD (STP)
RNAV (GPS) RWY 14

ST PAUL, MINNESOTA

AL-263 (FAA)

25331

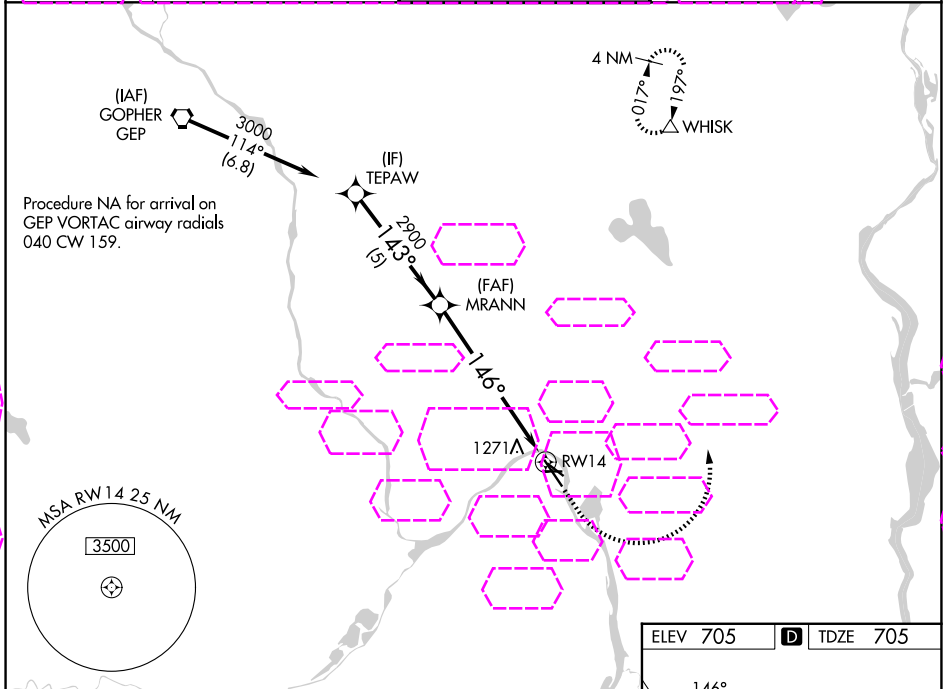
WAAS CH 62828 W14A	APP CRS 146°	Rwy Ldg 6148 TDZE 705 Apt Elev 705
--	------------------------	---

RNAV (GPS) RWY 14

ST PAUL DOWNTOWN HOLMAN FLD (STP)

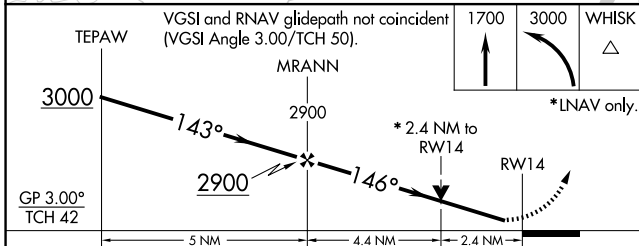
<p>⚠ For uncompensated Baro-VNAV systems, LNAV/VNAV NA below -21°C (-5°F) or above 54°C (130°F). Rwy 14 helicopter visibility reduction below ¾ SM NA. DME/DME RNP-0.3 NA. For inop MALS, increase LNAV Cats C and D to 2½ SM.</p> <p>⚠ -30°C</p>	<p>MALS</p>	<p>MISSED APPROACH: (Do not exceed 250K until WHISK) Climb to 1700 then climbing left turn to 3000 direct WHISK and hold.</p>
---	-------------	---

ATIS 118.35	MINNEAPOLIS APP CON 121.2 335.65	ST. PAUL TOWER ★ 119.1(CTAF) 257.8	GND CON 121.675	UNICOM 122.95
-----------------------	--	--	---------------------------	-------------------------



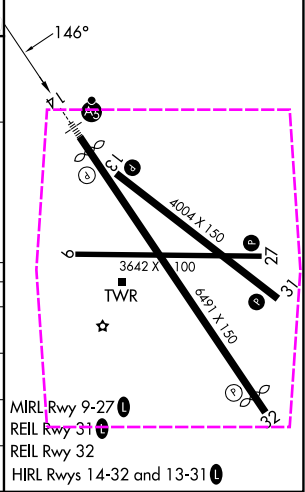
NC-1, 27 NOV 2025 to 25 DEC 2025

NC-1, 27 NOV 2025 to 25 DEC 2025



ELEV 705	D TDZE 705
----------	-------------------

CATEGORY	A	B	C	D
LPV DA	955/40		250 (300-¾)	
LNAV/VNAV DA	1511-2½		806 (900-2½)	
LNAV MDA	1520/40 815 (900-¾)		1520-1⅞ 815 (900-1⅞)	
CIRCLING	1580-1¼ 875 (900-1¼)		1580-2½ 875 (900-2½)	



ST PAUL, MINNESOTA
Amdt 1B 17AUG17

44°56'N-93°04'W

ST PAUL DOWNTOWN HOLMAN FLD (STP)
RNAV (GPS) RWY 14