

(AGUDE.AGUDE5) 23334 AGUDE FIVE ARRIVAL

AL-263 (FAA)

MINNEAPOLIS-ST PAUL, MINNESOTA

MINNEAPOLIS APP CON
121.2 335.5
ANE ATIS
120.625
FCM ATIS
124.9
MIC ATIS
124.475
STP ATIS
118.35

NC-1, 30 OCT 2025 to 27 NOV 2025

NOTE: Chart not to scale.
NOTE: DME and RADAR required.

GOPHER
117.3 GEP
Chan 120

AGUDE
VERTICAL NAVIGATION
PLANNING INFORMATION
Turbolojets: Expect 8000
Turboprops: Expect 6000

EAD CLAIRE
113.65 EAU
Chan 83(Y)

FARMINGTON
115.7 FGT
Chan 104

MINNEAPOLIS
115.3 MSP
Chan 100

ARRIVAL ROUTE DESCRIPTION

BADGER TRANSITION (BAE.AGUDE5): From over BAE VOR/DME on BAE R-307 to ROBBY INT then on EAU R-123 to EAU VORTAC, then on EAU R-286 to AGUDE/EAU 41 DME. Thence. . . .

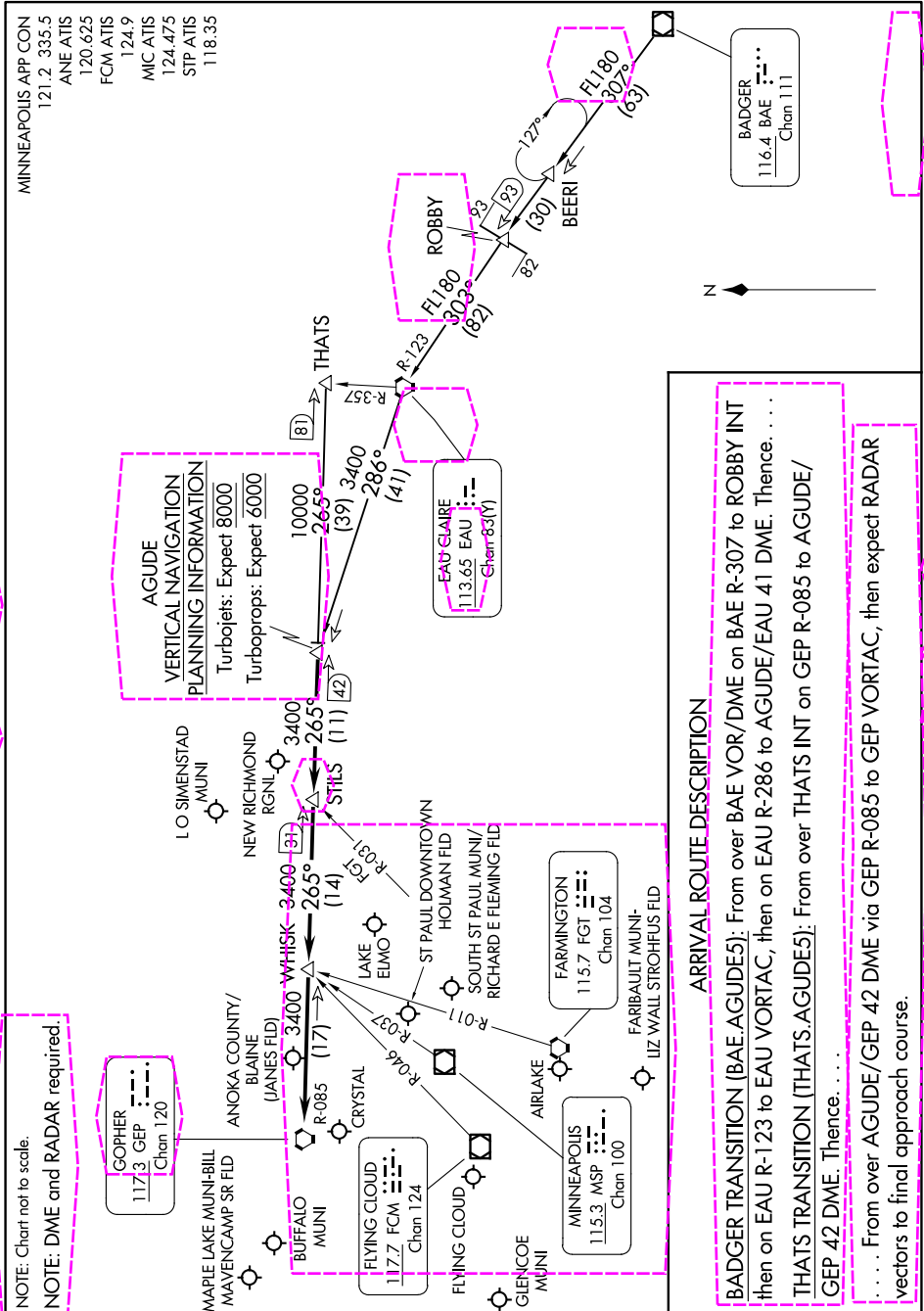
THATS TRANSITION (THATS.AGUDE5): From over THATS INT on GEP R-085 to AGUDE/ GEP 42 DME. Thence. . . .

. . . . From over AGUDE/ GEP 42 DME via GEP R-085 to GEP VORTAC, then expect RADAR vectors to final approach course.

NC-1, 30 OCT 2025 to 27 NOV 2025

(AGUDE.AGUDE5) 12OCT17

MINNEAPOLIS-ST PAUL, MINNESOTA



(AGUDE.AGUDE6) 25931

AGUDE SIX ARRIVAL

AL-263 (FAA)

MINNEAPOLIS-ST PAUL, MINNESOTA

MINNEAPOLIS APP CON
 121.2 335.5
 ANE ATIS
 120.625
 FCM ATIS
 124.9
 MIC ATIS
 124.475
 STP ATIS
 118.35

NC-1, 27 NOV 2025 to 25 DEC 2025

RADAR required.
 DME required.

GOPHER
 117.3 GEP
 Chan 120

MAPLE LAKE MUNI-BILL
 MAVENCAMP SR FLD

FLYING CLOUD
 117.7 FCM
 Chan 124

FLYING CLOUD
 117.7 FCM
 Chan 124

GLENCOE MUNI

FARBALUT MUNI-
 LIZ WALL STROHFUS FLD

AIRLAKE

FARMINGTON
 115.7 FGT
 Chan 104

LO SIMENSTAD
 MUNI

NEW RICHMOND
 RGNL

WHISK
 3400
 (17)

LAKE ELMO
 FGT
 R-031

ST PAUL DOWNTOWN
 HOLMAN FLD

SOUTH ST PAUL MUNI/
 RICHARD E FLEMING FLD

STILLS
 (11) (42)

THATS

AGUDE
 VERTICAL NAVIGATION
 PLANNING INFORMATION
 Jets: Expect 8000
 Turboprops: Expect 6000

10000
 *3200
 265°
 (39) 3400
 286°
 (41)

EAD CLAIRE
 113.65 EAU
 Chan 83(Y)

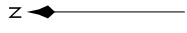
R-123

ROBBY
 *1100
 303°
 (82)

BEERI

172°

FL180
 *1100
 303°
 (63)



BADGER
 116.4 BAE
 Chan 111

NOTE: Chart not to scale.

ARRIVAL ROUTE DESCRIPTION

BADGER TRANSITION (BAE.AGUDE6): From over BAE VOR/DME on BAE R-307 to ROBBY then on EAU R-123 to EAU VORTAC, then on EAU R-286 to AGUDE. Thence. . .

THATS TRANSITION (THATS.AGUDE6): From over THATS on GEP R-085 to AGUDE. Thence. . .

LANDING ALL AIRPORTS: From over AGUDE/GEP 42 DME on GEP R-085 to GEP VORTAC, then expect RADAR vectors to final approach course.

AGUDE SIX ARRIVAL

(AGUDE.AGUDE6) 27NOV25

MINNEAPOLIS-ST PAUL, MINNESOTA

NC-1, 27 NOV 2025 to 25 DEC 2025