

WAAS CH 97507 W18D	APP CRS 180°	Rwy Idg TDZE Apt Elev	11120 290 341
--	------------------------	-----------------------------	--

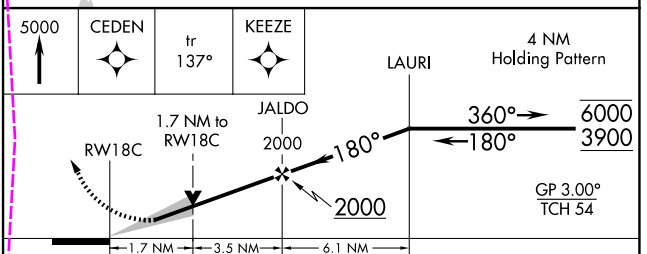
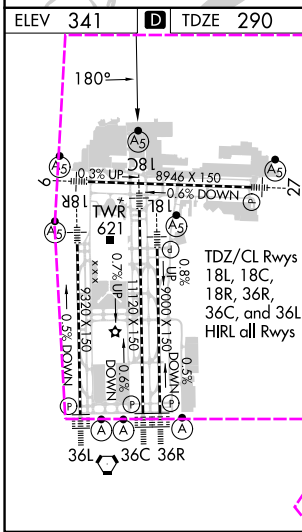
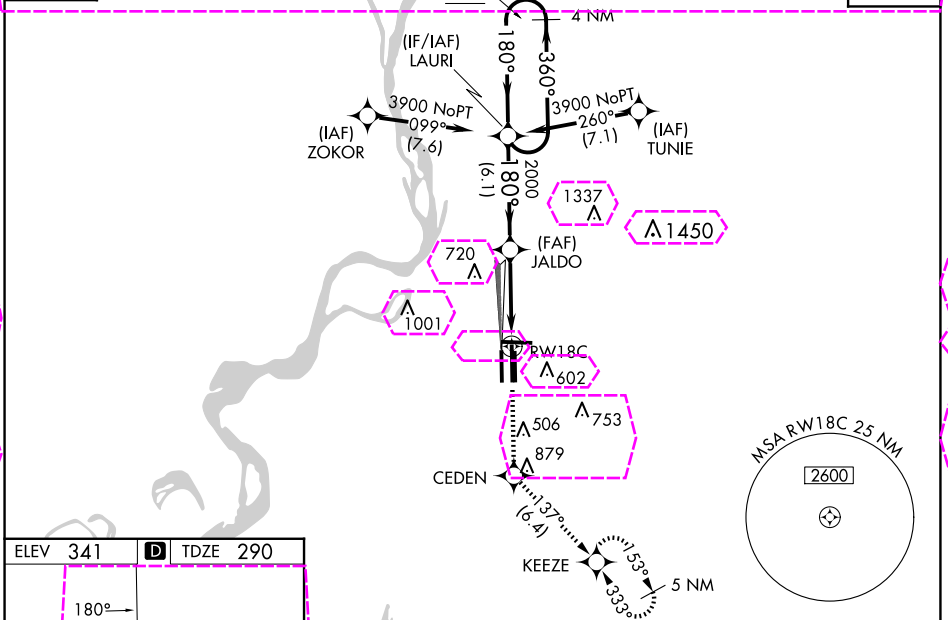
RNAV (GPS) Z RWY 18C

MEMPHIS INTL (MEM)

RNP APCH - GPS.	MALSR	MISSED APPROACH: Climb to 5000 direct CEDEN and on track 137° to KEEZE and hold, continue climb-in-hold to 5000.
<p>Simultaneous approach authorized. For uncompensated Baro-VNAV systems, LNAV/VNAV NA below -15°C or above 54°C. Use of FD or AP required during simultaneous operations. LNAV procedure NA during simultaneous operations. For Inop ALS, increase LPV all Cats visibility to RVR 5500 and LNAV/VNAV all Cats visibility to 1 1/2 SM.</p>		

MEMPHIS APP CON	MEMPHIS TOWER	GND CON	CLNC DEL
119.1 291.6 (176°-355°)	118.3 257.8 (Rwy 9-27)	121.0 379.2 (Rwys 18C-36C, 18L-36R)	125.2
125.8 338.3 (356°-175°)	119.7 257.8 (Rwys 18C-36C, 18L-36R)	121.9 379.2 (Rwy 18R-36L)	
	128.425 257.8 (Rwy 18R-36L)	121.65 379.2	

D-ATIS 127.75	CPDLC
-------------------------	-------



CATEGORY	A	B	C	D
LPV DA		665/35	375 (400-5%)	
LNAV/VNAV DA		782/50	492 (500-1)	
LNAV MDA	880/24	590 (600-1/2)	880-1 1/4	590 (600-1 1/4)
CIRCLING	940-1	599 (600-1)	940-1 3/4	1020-2 1/4
			599 (600-1 1/4)	679 (700-2 1/4)

SE-1, 30 OCT 2025 to 27 NOV 2025

SE-1, 30 OCT 2025 to 27 NOV 2025

WAAS CH 97507 W18D	APP CRS 180°	Rwy Ldg TDZE Apt Elev	11120 290 341
--	------------------------	-----------------------------	--

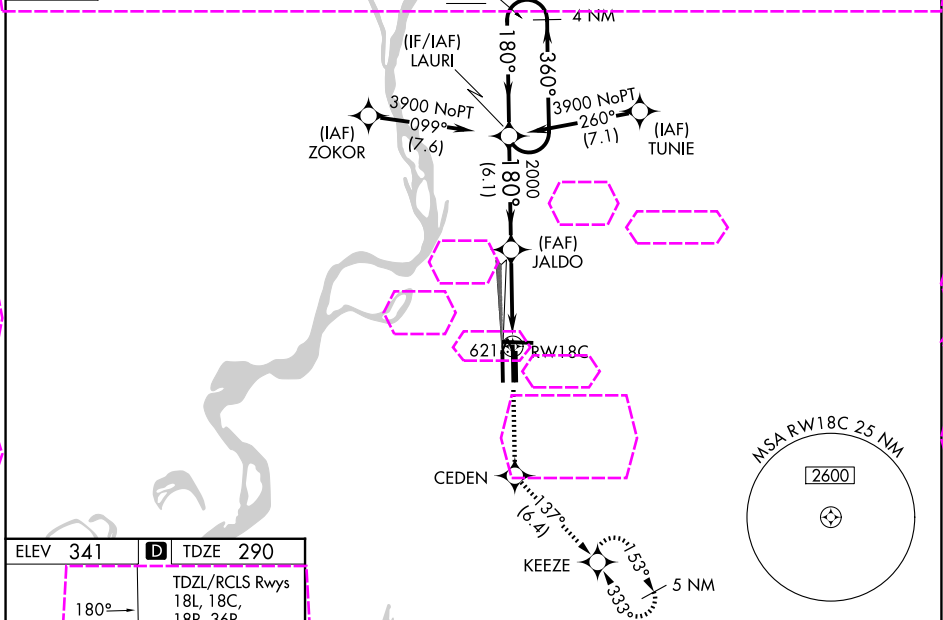
RNAV (GPS) Z RWY 18C

MEMPHIS INTL (MEM)

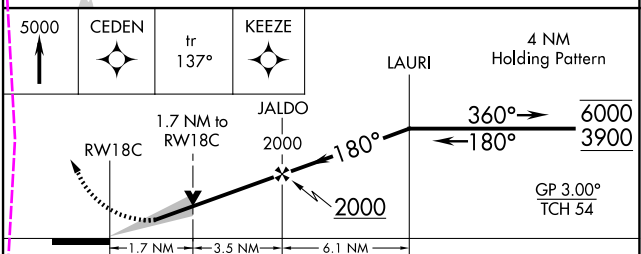
RNP APCH - GPS.	MALSR	MISSED APPROACH: Climb to 5000 direct CEDEN and on track 137° to KEEZE and hold, continue climb-in-hold to 5000.
<p>Simultaneous approach authorized. For uncompensated Baro-VNAV systems, LNAV/VNAV NA below -15°C or above 54°C. Use of FD or AP required during simultaneous operations. LNAV procedure NA during simultaneous operations. For Inop ALS, increase LPV all Cats visibility to RVR 5500 and LNAV/VNAV all Cats visibility to 1 1/2 SM.</p>		

MEMPHIS APP CON	MEMPHIS TOWER	MEMPHIS TOWER	GND CON
119.1 291.6 (176°-355°)	(Rwy 9-27) 118.3 257.8	(Rwy 9-27) 119.7 257.8	121.0 379.2
125.8 338.3 (356°-175°)	(Rwys 18C-36C, 18L-36R) 119.7 257.8	(Rwys 18C-36C, 18L-36R) 121.9 379.2	121.9 379.2
	(Rwy 18R-36L) 128.425 257.8	(Rwy 18R-36L) 121.65 379.2	

D-ATIS
127.75



ELEV 341	D	TDZE 290
TDZL/RCLS Rwys 18L, 18C, 18R, 36R, 36C, and 36L HIRL all Rwys		
36L 36C 36R		



CATEGORY	A	B	C	D
LPV DA		665/35	375 (400-5%)	
LNAV/VNAV DA		782/50	492 (500-1)	
LNAV MDA	880/24	590 (600-1/2)	880-1 1/4	590 (600-1 1/4)
CIRCLING	940-1	599 (600-1)	940-1 3/4	1020-2 1/4
			599 (600-1 1/4)	679 (700-2 1/4)

SE-1, 127 NOV 2025 to 25 DEC 2025

SE-1, 27 NOV 2025 to 25 DEC 2025