

MEMPHIS, TENNESSEE

AL-253 (FAA)

25107

RNAV (RNP) Y RWY 18R

MEMPHIS INTL (MEM)

APP CRS 180°	Rwy Idg 9320
	TDZE 295
	Apt Elev 341

▼ For uncompensated Baro-VNAV systems, procedure NA below -9°C (16°F) or above 48°C (118°F). Simultaneous approach authorized. GPS required. Use of FD or AP required during simultaneous operations. For inop ALS, increase RNP 0.19* all Cats visibility to RVR 6000 and RNP 0.30 all Cats visibility to 1 3/4 SM.

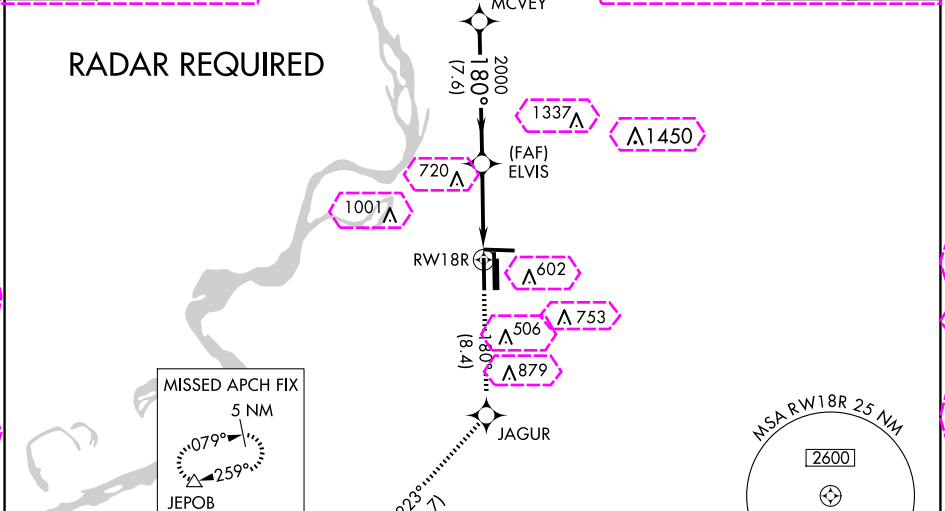
MALSRL MISSED APPROACH: Climb to 5000 on track 180° to JAGUR and on track 223° to JEPOB and hold. *Missed approach requires minimum climb of 425 feet per NM to 1000.

MEMPHIS APP CON 119.1 291.6 (176°-355°) 125.8 338.3 (356°-175°)	MEMPHIS TOWER (Rwy 9-27) 118.3 257.8 (Rwys 18C-36C, 18L-36R) 119.7 257.8 (Rwy 18R-36L) 128.425 257.8	GND CON (Rwy 9-27) 121.0 379.2 (Rwys 18C-36C, 18L-36R) 121.9 379.2 (Rwy 18R-36L) 121.65 379.2
---	--	---

D-ATIS
127.75

CLNC DEL **125.2** CPDLC

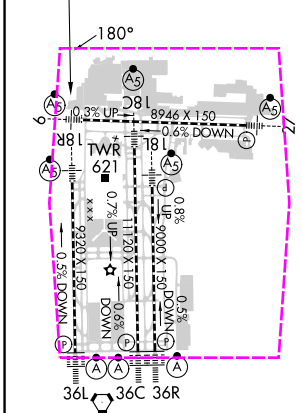
RADAR REQUIRED



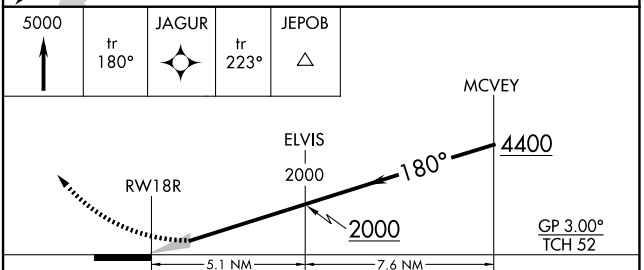
SE-1, 30 OCT 2025 to 27 NOV 2025

SE-1, 30 OCT 2025 to 27 NOV 2025

ELEV 341	D	TDZE 295
-----------------	----------	-----------------



TDZ/CL Rwys 18L, 18C, 18R, 36R, 36C, and 36L
HIRL all Rwys



CATEGORY	A	B	C	D
RNP 0.19 DA *		645/40	350 (400-3/4)	
RNP 0.30 DA		771/60	476 (500-1 1/4)	

AUTHORIZATION REQUIRED

MEMPHIS, TENNESSEE
Orig-E 29MAR18

35°03'N-89°59'W

MEMPHIS INTL (MEM)

RNAV (RNP) Y RWY 18R

MEMPHIS, TENNESSEE

AL-253 (FAA)


25331

RNAV (RNP) Y RWY 18R

MEMPHIS INTL (MEM)

APP CRS 180°	Rwy Ldg 9320
	TDZE 295
	Apt Elev 341

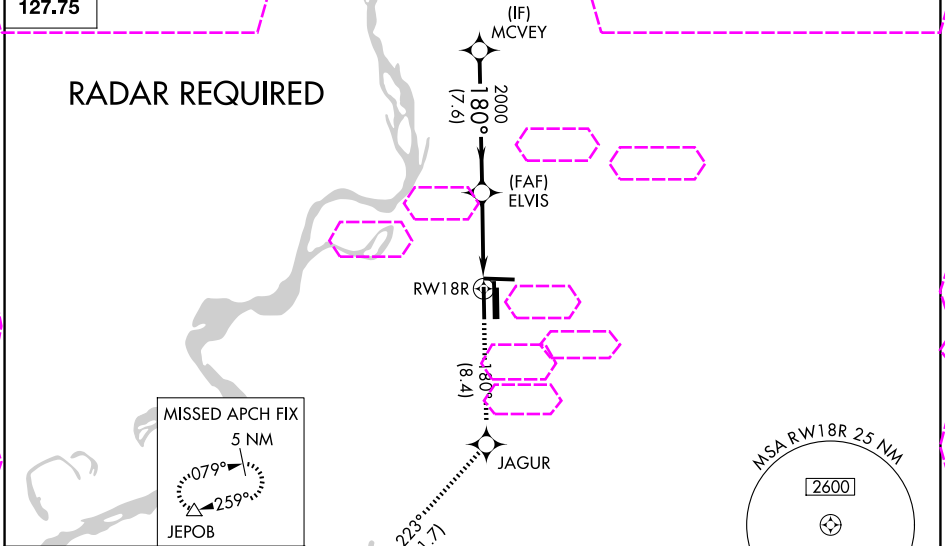
▼ For uncompensated Baro-VNAV systems, procedure NA below -9°C (16°F) or above 48°C (118°F). Simultaneous approach authorized. GPS required. Use of FD or AP required during simultaneous operations. For inop ALS, increase RNP 0.19* all Cats visibility to RVR 6000 and RNP 0.30 all Cats visibility to 1 3/4 SM.

MALSR  MISSED APPROACH: Climb to 5000 on track 180° to JAGUR and on track 223° to JEPOB and hold. *Missed approach requires minimum climb of 425 feet per NM to 1000.

MEMPHIS APP CON 119.1 291.6 (176°-355°) 125.8 338.3 (356°-175°)	MEMPHIS TOWER (Rwy 9-27) 118.3 257.8 (Rwys 18C-36C, 18L-36R) 119.7 257.8 (Rwy 18R-36L) 128.425 257.8	GND CON (Rwy 9-27) 121.0 379.2 (Rwys 18C-36C, 18L-36R) 121.9 379.2 (Rwy 18R-36L) 121.65 379.2
---	--	---

D-ATIS
127.75

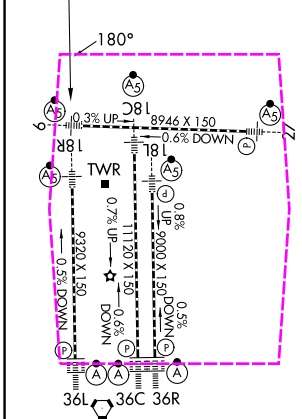
RADAR REQUIRED


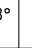


SE-1, 27 NOV 2025 to 25 DEC 2025

SE-1, 27 NOV 2025 to 25 DEC 2025

ELEV 341 **D** TDZE 295



5000	tr 180°	JAGUR	tr 223°	JEPOB	MCVEY
					
					ELVIS 2000
					4400
					GP 3.00° TCH 52
CATEGORY	A	B	C	D	
RNP 0.19 DA *		645/40	350 (400-3/4)		
RNP 0.30 DA		771/60	476 (500-1 1/4)		

TDZL/RCLS Rwys 18L, 18C, 18R, 36R, 36C, and 36L
HIRL all Rwys

MEMPHIS, TENNESSEE
Orig-E 29MAR18

35°03'N-89°59'W

MEMPHIS INTL (MEM)

RNAV (RNP) Y RWY 18R