

MEMPHIS, TENNESSEE

AL-253 (FAA)

25107

# RNAV (RNP) Y RWY 18L

MEMPHIS INTL (MEM)

APP CRS	Rwy Idg	<b>9000</b>
<b>180°</b>	TDZE	<b>301</b>
	Apt Elev	<b>341</b>

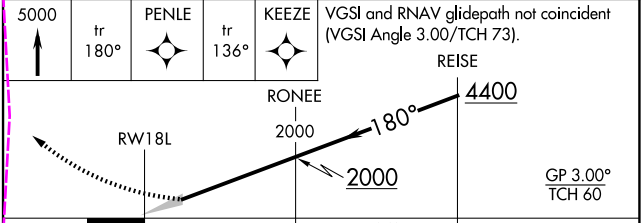
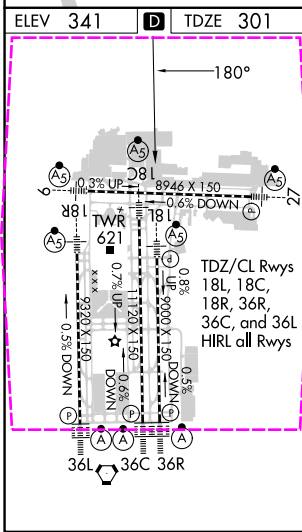
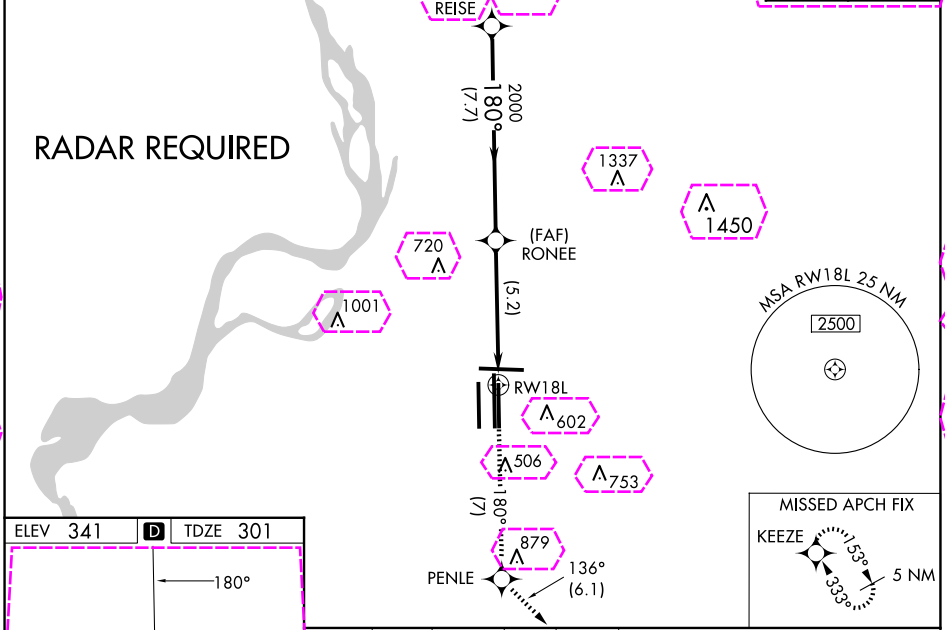
For uncompensated Baro-VNAV systems, procedure NA below -9°C (16°F) or above 48°C (118 °F). GPS required. Simultaneous approach authorized. For inop ALS, increase RNP 0.30\* all Cats visibility to RVR 6000 and RNP 0.30 all Cats visibility to 1¼ SM.

MALS R MISSED APPROACH: Climb to 5000 on track 180° to PENLE and on track 136° to KEEZE and hold, continue climb-in-hold to 5000. \*Missed approach requires minimum climb of 400 feet per NM to 1000.

MEMPHIS APP CON	MEMPHIS TOWER	GND CON
<b>119.1 291.6</b> (176°-355°)	<b>118.3 257.8</b> (Rwy 9-27)	<b>121.0 379.2</b> (Rwy 9-27)
<b>125.8 338.3</b> (356°-175°)	<b>119.7 257.8</b> (Rwys 18C-36C, 18L-36R)	<b>121.9 379.2</b> (Rwys 18C-36C, 18L-36R)
	<b>128.425 257.8</b> (Rwy 18R-36L)	<b>121.65 379.2</b> (Rwy 18R-36L)

D-ATIS  
**127.75**

CLNC DEL **125.2** CPDLC



CATEGORY	A	B	C	D
RNP 0.30 DA*		698/50	397 (400-1)	
RNP 0.30 DA		791/60	490 (500-1¼)	

## AUTHORIZATION REQUIRED

MEMPHIS, TENNESSEE  
Orig-D 29MAR18

35°03'N-89°59'W

# RNAV (RNP) Y RWY 18L

SE-1, 30 OCT 2025 to 27 NOV 2025

SE-1, 30 OCT 2025 to 27 NOV 2025

MEMPHIS, TENNESSEE

AL-253 (FAA)


25331

# RNAV (RNP) Y RWY 18L

MEMPHIS INTL (MEM)

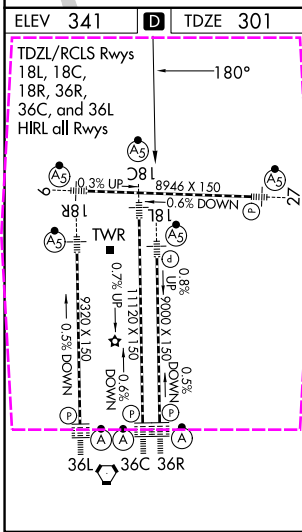
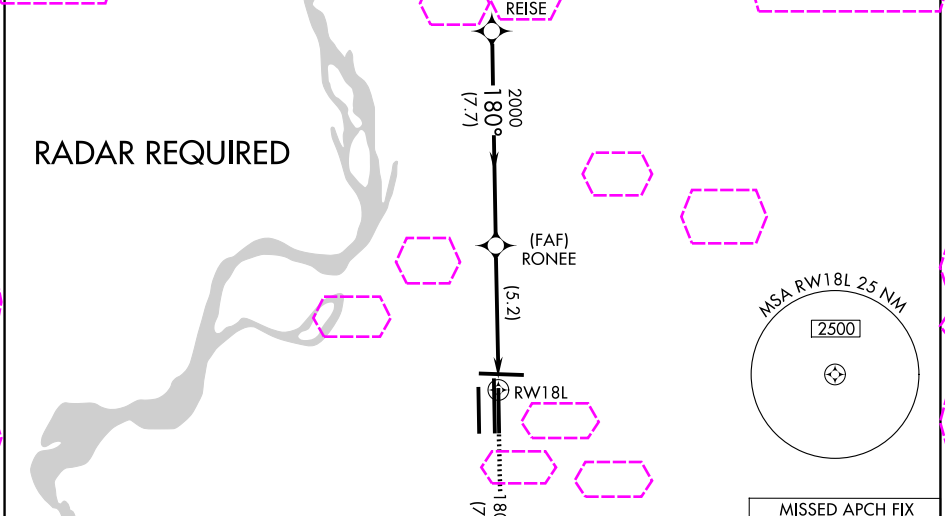
APP CRS	Rwy Ldg	<b>9000</b>
<b>180°</b>	TDZE	<b>301</b>
	Apt Elev	<b>341</b>

▼ For uncompensated Baro-VNAV systems, procedure NA below -9°C (16°F) or above 48°C (118 °F). GPS required. Simultaneous approach authorized. For inop ALS, increase RNP 0.30\* all Cats visibility to RVR 6000 and RNP 0.30 all Cats visibility to 1¼ SM.

MALSRS  MISSED APPROACH: Climb to 5000 on track 180° to PENLE and on track 136° to KEEZE and hold, continue climb-in-hold to 5000. \*Missed approach requires minimum climb of 400 feet per NM to 1000.

MEMPHIS APP CON	MEMPHIS TOWER	GND CON
<b>119.1 291.6</b> (176°-355°)	<b>118.3 257.8</b> (Rwys 18C-36C, 18L-36R)	<b>121.0 379.2</b> (Rwy 9-27)
<b>125.8 338.3</b> (356°-175°)	<b>119.7 257.8</b> (Rwy 18R-36L)	<b>121.9 379.2</b> (Rwys 18C-36C, 18L-36R)
	<b>128.425 257.8</b>	<b>121.65 379.2</b> (Rwy 18R-36L)

D-ATIS  
**127.75**



ELEV 341	<b>D</b>	TDZE 301			
<p>TDZL/RCLS Rwys 18L, 18C, 18R, 36R, 36C, and 36L HIRL all Rwys</p>					
5000	tr 180°	PENLE	tr 136°	KEEZE	VGSI and RNAV glidepath not coincident (VGSI Angle 3.00/TCH 73).
				REISE	4400
RWY 18L		RONEE	2000		2000
5.2 NM		7.7 NM		GP 3.00° TCH 60	
CATEGORY	A	B	C	D	
RNP 0.30 DA*	698/50		397 (400-1)		
RNP 0.30 DA	791/60		490 (500-1¼)		

## AUTHORIZATION REQUIRED

MEMPHIS, TENNESSEE  
Orig-D 29MAR18

35°03'N-89°59'W

MEMPHIS INTL (MEM)  
**RNAV (RNP) Y RWY 18L**

SE-1, 127 NOV 2025 to 25 DEC 2025

SE-1, 27 NOV 2025 to 25 DEC 2025