

MEMPHIS, TENNESSEE

AL-253 (FAA)

25331


RNAV (RNP) Y RWY 18C

MEMPHIS INTL (MEM)

| | | |
|------------------------|-----------------------------|--|
| APP CRS 180° | Rwy Ldg TDZE Apt Elev | 11120 290 341 |
|------------------------|-----------------------------|--|

For uncompensated Baro-VNAV systems, procedure NA below -10°C (14°F) or above 54°C (130°F). GPS required. For inop ALS, increase RNP 0.30* all Cats visibility to 1½ SM and RNP 0.30 all Cats visibility to 1½ SM. Simultaneous approach authorized. Use of FD or AP required during simultaneous operations.

MALSR

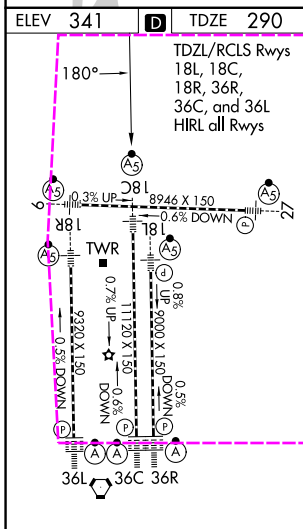
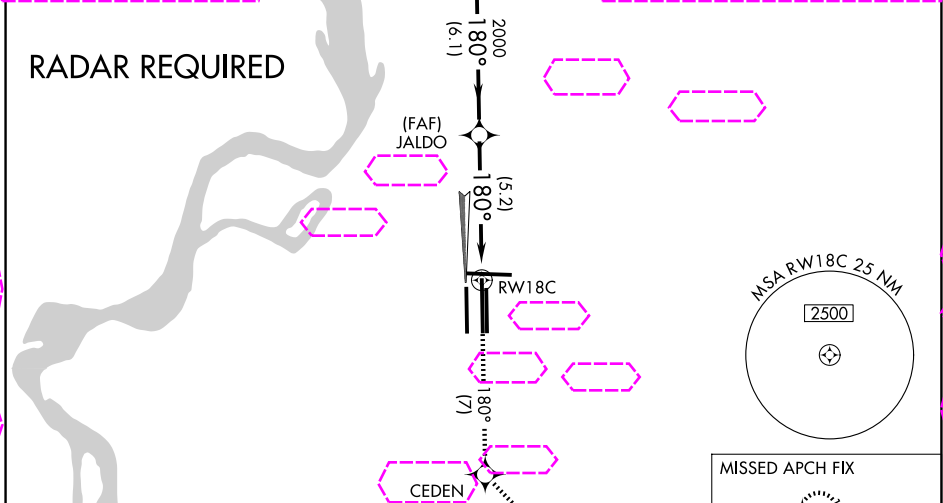


MISSED APPROACH: Climb to 5000 on track 180° to CEDEN on track 137° to KEEZE and hold, continue climb-in-hold to 5000. *Missed approach requires a minimum climb of 400 feet per NM to 1000.

| | | | | |
|--------------------------------|-------------------------|----------------------|-------------------------|---------------------|
| MEMPHIS APP CON | (Rwy 9-27) | 118.3 257.8 | (Rwy 9-27) | 121.0 379.2 |
| 119.1 291.6 (176°-355°) | (Rwys 18C-36C, 18L-36R) | 119.7 257.8 | (Rwys 18C-36C, 18L-36R) | 121.9 379.2 |
| 125.8 338.3 (356°-175°) | (Rwy 18R-36L) | 128.425 257.8 | (Rwy 18R-36L) | 121.65 379.2 |

| | |
|-------------------------|---------------------|
| MEMPHIS TOWER | GND CON |
| (Rwy 9-27) | 121.0 379.2 |
| (Rwys 18C-36C, 18L-36R) | 121.9 379.2 |
| (Rwy 18R-36L) | 121.65 379.2 |

| | |
|--------|---------------|
| D-ATIS | 127.75 |
|--------|---------------|



| | | | | | |
|--------------|--------------------|---------|---------|-------|--------|
| 5000 | tr 180° | CEDEN | tr 137° | KEEZE | LAURI |
| | | | | | 3900 |
| | | RWY 18C | JALDO | | 2000 |
| | | | | | 2000 |
| | | | | | 5.2 NM |
| | | | | | 6.1 NM |
| CATEGORY | A | B | C | D | |
| RNP 0.30 DA* | 655/35 365 (400-%) | | | | |
| RNP 0.30 DA | 747/54 457 (500-1) | | | | |

GP 3.00° TCH 54

AUTHORIZATION REQUIRED

MEMPHIS, TENNESSEE
Orig-E 29MAR18

35°03'N-89°59'W

RNAV (RNP) Y RWY 18C

MEMPHIS INTL (MEM)

SE-1, 127 NOV 2025 to 25 DEC 2025

SE-1, 27 NOV 2025 to 25 DEC 2025