

MEMPHIS, TENNESSEE

AL-253 (FAA)


25107

APP CRS	Rwy Idg	9320
180°	TDZE	295
	Apt Elev	341

RNAV (RNP) X RWY 18R

MEMPHIS INTL (MEM)

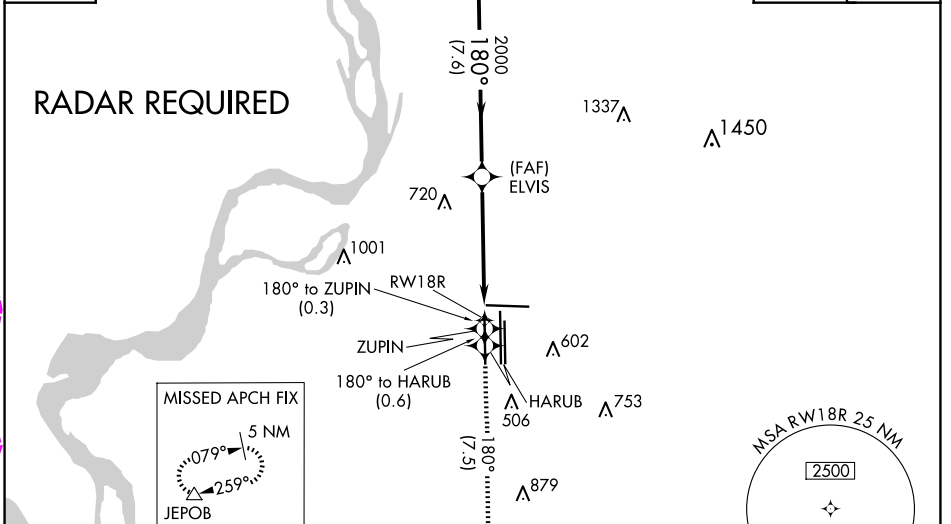
▼ For uncompensated Baro-VNAV systems, procedure NA below -9°C (16°F) or above 48°C (118°F). Simultaneous approach authorized. GPS required. Missed approach requires RNP less than 1.0. Use of FD or AP required during simultaneous operations.

MALSR  MISSED APPROACH: Climb to 5000 on track 180° to ZUPIN and on track 180° to HARUB and on track 223° to JAGUR and on track 223° to JEPOB and hold.

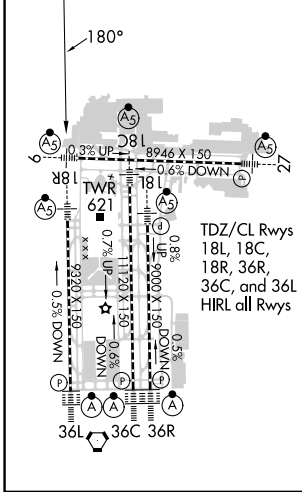
MEMPHIS APP CON	MEMPHIS TOWER	GND CON
119.1 291.6 (176°-355°)	118.3 257.8 (Rwy 9-27)	121.0 379.2 (Rwy 9-27)
125.8 338.3 (356°-175°)	119.7 257.8 (Rwys 18C-36C, 18L-36R)	121.9 379.2 (Rwys 18C-36C, 18L-36R)
	128.425 257.8 (Rwy 18R-36L)	121.65 379.2 (Rwy 18R-36L)

D-ATIS
127.75

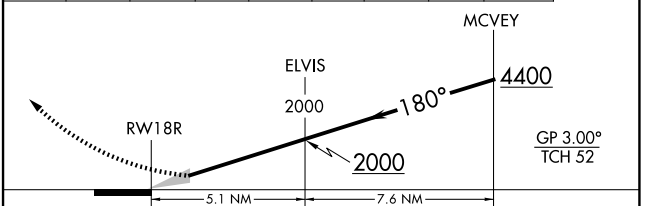
CLNC DEL **125.2** CPDLC



ELEV **341** TDZE **295**



5000	ZUPIN	HARUB	JAGUR	JEPOB
↑	tr 180°	tr 180°	tr 180°	tr 223°



CATEGORY	A	B	C	D
RNP 0.14 DA	737/45		442 (400-7/8)	

AUTHORIZATION REQUIRED

MEMPHIS, TENNESSEE
Orig-E 29MAR18

35°03'N-89°59'W

MEMPHIS INTL (MEM)
RNAV (RNP) X RWY 18R

SE-1, 30 OCT 2023 to 27 NOV 2025

SE-1, 30 OCT 2025 to 27 NOV 2025

APP CRS	Rwy Ldg	9320
180°	TDZE	295
	Apt Elev	341

RNAV (RNP) X RWY 18R

MEMPHIS INTL (MEM)

▼ For uncompensated Baro-VNAV systems, procedure NA below -9°C (16°F) or above 48°C (118°F). Simultaneous approach authorized. GPS required. Missed approach requires RNP less than 1.0. Use of FD or AP required during simultaneous operations.

MALSR



MISSED APPROACH: Climb to 5000 on track 180° to ZUPIN and on track 180° to HARUB and on track 180° to JAGUR and on track 223° to JEPOB and hold.

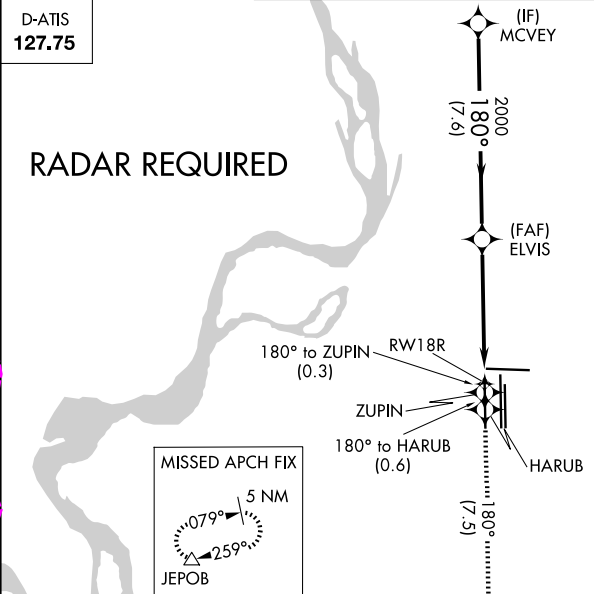
MEMPHIS APP CON		
119.1	291.6	(176°-355°)
125.8	338.3	(356°-175°)

MEMPHIS TOWER	
(Rwy 9-27)	118.3 257.8
(Rwys 18C-36C, 18L-36R)	119.7 257.8
(Rwy 18R-36L)	128.425 257.8

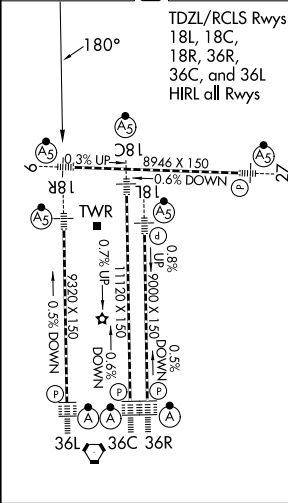
GND CON	
(Rwy 9-27)	121.0 379.2
(Rwys 18C-36C, 18L-36R)	121.9 379.2
(Rwy 18R-36L)	121.65 379.2

D-ATIS
127.75

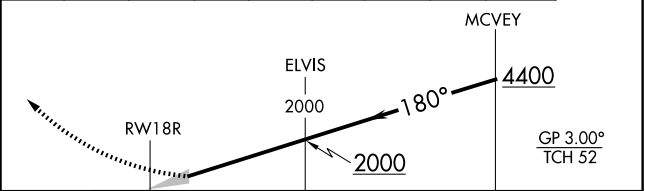
RADAR REQUIRED



ELEV	341	TDZE	295
------	------------	------	------------



5000	tr 180°	ZUPIN	tr 180°	HARUB	tr 180°	JAGUR	tr 223°	JEPOB
------	---------	-------	---------	-------	---------	-------	---------	-------



CATEGORY	A	B	C	D
RNP 0.14 DA	737/45		442 (400-%)	

AUTHORIZATION REQUIRED