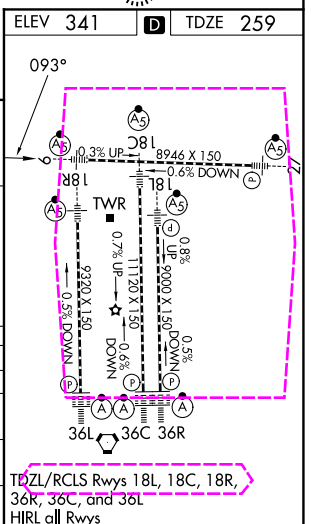
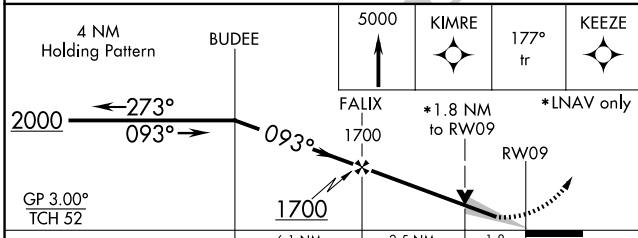
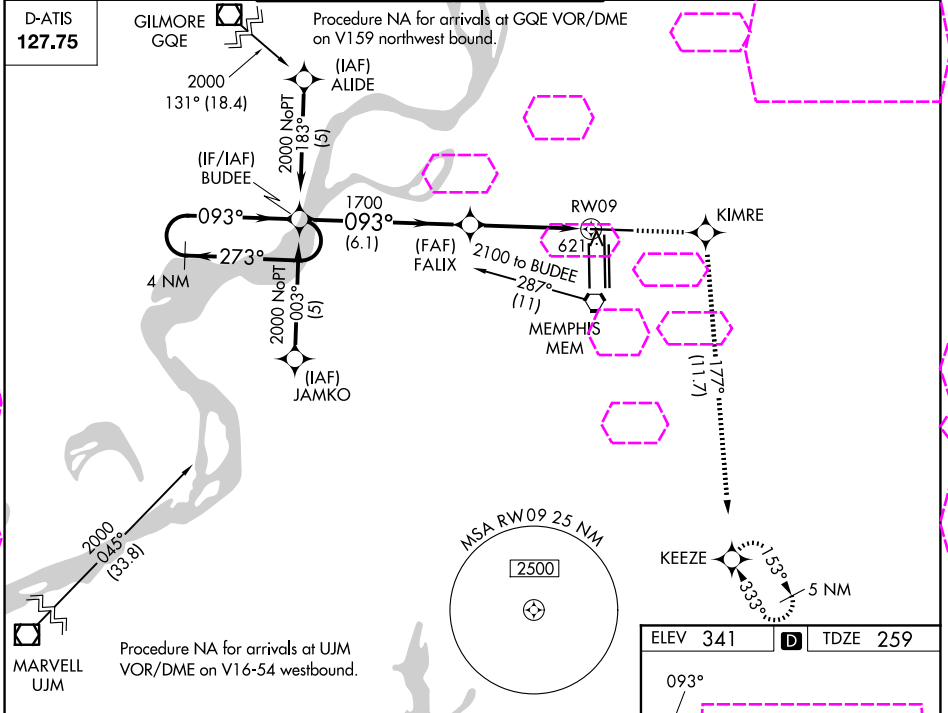


WAAS CH 63106 W09A	APP CRS 093°	Rwy Ldg 8946 TDZE 259 Apt Elev 341
--	------------------------	--

RNAV (GPS) RWY 9

MEMPHIS INTL (MEM)

<p>⚠ For uncompensated Baro-VNAV systems, LNAV/VNAV NA below -15°C (5°F) or above 48°C (118°F). DME/DME RNP-0.3 NA. For inop ALS, increase LPV all Cats visibility to RVR 5000.</p>	<p>MALS/R</p>	<p>MISSED APPROACH: Climb to 5000 direct KIMRE and on 177° track to KEEZE and hold, continue climb-in-hold to 5000.</p>



CATEGORY	A	B	C	D
LPV DA		557/24	298 (300-1/2)	
LNAV/VNAV DA		782/60	523 (500-1 1/4)	
LNAV MDA	880/24	621 (600-1/2)	880/60 621 (600-1 1/4)	880-1 1/2 621 (600-1 1/2)
CIRCLING	940-1	599 (600-1)	940-1 1/2 599 (600-1 1/2)	1020-2 1/4 679 (700-2 1/4)

SE-1, 27 NOV 2025 to 25 DEC 2025

SE-1, 27 NOV 2025 to 25 DEC 2025