



MEMPHIS, TENNESSEE

AL-253 (FAA)

25331

WAAS CH <b>65907</b> <b>W36A</b>	APP CRS <b>360°</b>	Rwy Ldg TDZE Apt Elev	<b>9320</b> <b>321</b> <b>341</b>
--	------------------------	-----------------------------	---

# RNAV (GPS) RWY 36L

MEMPHIS INTL (MEM)

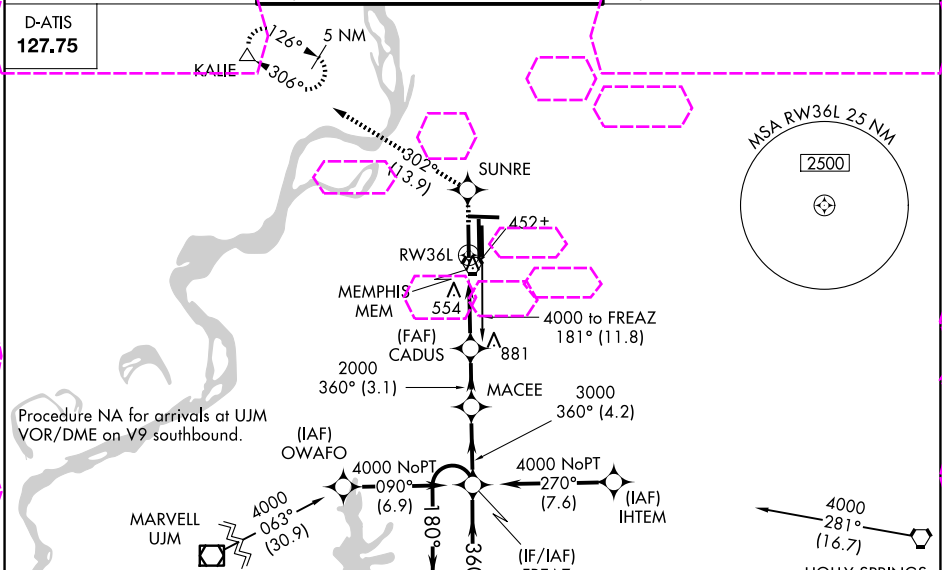
**⚠** For uncompensated Baro-VNAV systems, LNAV/VNAV NA below -15°C (5°F) or above 48°C (118°F). Simultaneous approach authorized. DME/DME RNP-0.3 NA. LNAV procedure NA during simultaneous operations. Use of FD or AP required during simultaneous operations.

ALSF-2

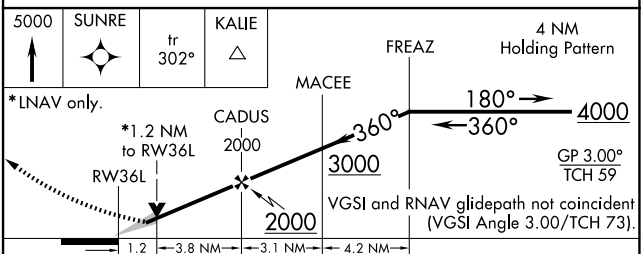
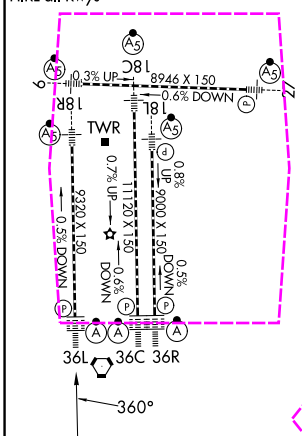


**MISSED APPROACH:** Climb to 5000 direct SUNRE and on track 302° to KALIE and hold, continue climb-in-hold to 5000.

MEMPHIS APP CON	MEMPHIS TOWER	GND CON
<b>119.1 291.6</b> (176°-355°)	(Rwy 9-27) <b>118.3 257.8</b>	(Rwy 9-27) <b>121.0 379.2</b>
<b>125.8 338.3</b> (356°-175°)	(Rwys 18C-36C, 18L-36R) <b>119.7 257.8</b>	(Rwys 18C-36C, 18L-36R) <b>121.9 379.2</b>
	(Rwy 18R-36L) <b>128.425 257.8</b>	(Rwy 18R-36L) <b>121.65 379.2</b>



ELEV 341	<b>D</b>	TDZE 321
TDZ/CL Rwys 18L, 18C, 18R, 36R, 36C, and 36L		
HIRL all Rwys		



CATEGORY	A	B	C	D
LPV DA	673/40 352 (400-¾)			
LNAV/VNAV DA	760/50 439 (500-1)			
LNAV MDA	780/24	459 (500-½)	780/40 459 (500-¾)	780/50 459 (500-1)
<b>CIRCLING</b>	940-1	599 (600-1)	940-1½ 599 (600-1½)	1020-2¼ 679 (700-2¼)

MEMPHIS, TENNESSEE  
Amdt 1C 29MAR18

35°03'N-89°59'W

# MEMPHIS INTL (MEM) RNAV (GPS) RWY 36L

SE-1, 27 NOV 2025 to 25 DEC 2025

SE-1, 27 NOV 2025 to 25 DEC 2025