

MEMPHIS, TENNESSEE

AL-253 (FAA)

25107

LOC I-MEM 109.5	APP CRS 093°	Rwy Idg 8946
		TDZE 259
		Apt Elev 341

ILS or LOC RWY 9

MEMPHIS INTL (MEM)

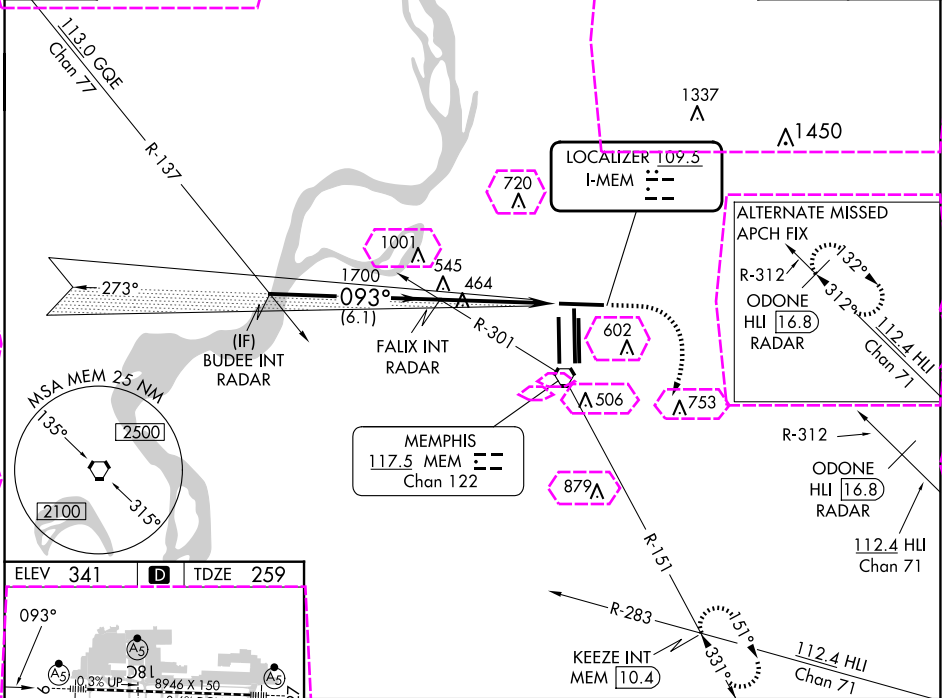
▼ For inop ALS, increase S-ILS 9 Cat E visibility to RVR 4000 and S-LOC 9 Cat E visibility to 1 3/4 SM.

MALSR
AS

MISSED APPROACH: Climb to 1000 then climbing right turn to 5000 on MEM R-151 to KEEZE INT/MEM 10.4 DME and hold, continue climb-in-hold to 5000.

MEMPHIS APP CON 119.1 291.6 (176°-355°) 125.8 338.3 (356°-175°)	MEMPHIS TOWER (Rwy 9-27) 118.3 257.8 (Rwys 18C-36C, 18L-36R) 119.7 257.8 (Rwy 18R-36L) 128.425 257.8	GND CON (Rwy 9-27) 121.0 379.2 (Rwys 18C-36C, 18L-36R) 121.9 379.2 (Rwy 18R-36L) 121.65 379.2
---	--	---

D-ATIS 127.75	RADAR REQUIRED	CLNC DEL 125.2	CPDLC
-------------------------	-----------------------	--------------------------	-------



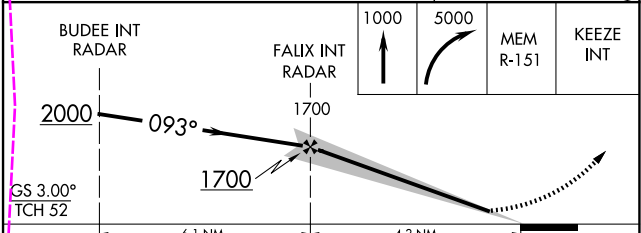
SE-1, 30 OCT 2025 to 27 NOV 2025

SE-1, 30 OCT 2025 to 27 NOV 2025

ELEV 341	D	TDZE 259
----------	---	----------

Profile view details:

- Obstacles:** TWR 621, 18L, 18C, 18R, 36R, 36L.
- Clearance:** 28' over 18L, 18C, 18R; 27' over 36L.
- Grades:** 0.3% UP, 0.6% DOWN, 0.7% UP, 0.8% UP, 0.8% DOWN, 0.6% DOWN, 0.5% DOWN, 0.5% DOWN.
- Dimensions:** 8946 X 150, 1170 X 150, 9200 X 150.



BUDEE INT RADAR	FALIX INT RADAR	1000	5000	MEM R-151	KEEZE INT
GS 3.00° TCH 52					
CATEGORY	A	B	C	D	E
S-ILS 9	466/24 207 (200-1/2)				
S-LOC 9	720/24	461 (400-1/2)	720/50	461 (400-1)	720/60 461 (400-1 1/4)
<input checked="" type="checkbox"/> CIRCLING	940-1	599 (600-1)	940-1 1/2 599 (600-1 1/2)	1020-2 1/4 679 (700-2 1/4)	1140-2 3/4 799 (800-2 3/4)

MEMPHIS, TENNESSEE
Amdt 27B 29MAR18

35°03'N-89°59'W

MEMPHIS INTL (MEM) ILS or LOC RWY 9

MEMPHIS, TENNESSEE

AL-253 (FAA)

25331

LOC I-MEM 109.5	APP CRS 093°	Rwy Ldg 8946
		TDZE 259
		Apt Elev 341

ILS or LOC RWY 9

MEMPHIS INTL (MEM)

▲ For inop ALS, increase S-ILS 9 Cat E visibility to RVR 4000 and S-LOC 9 Cat E visibility to 1¾ SM.

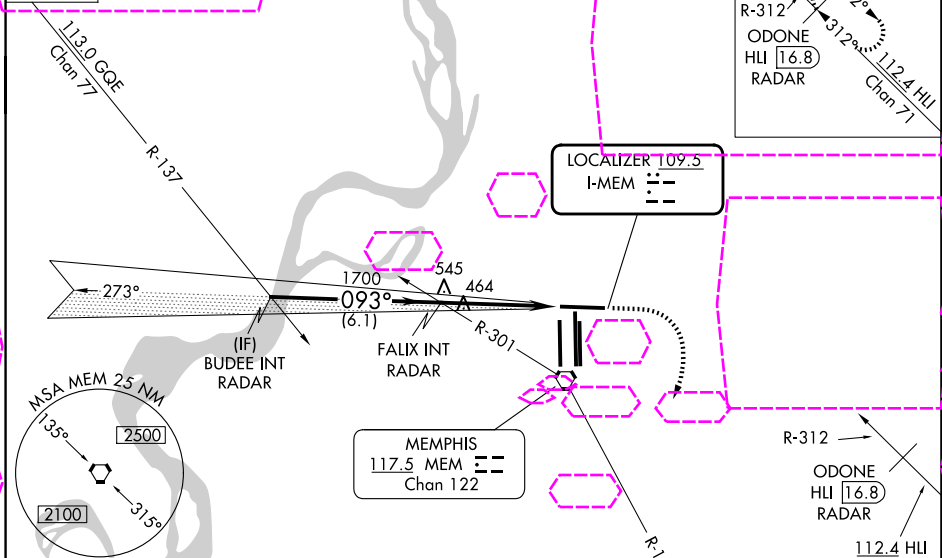
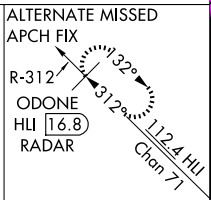
MALSR

MISSED APPROACH: Climb to 1000 then climbing right turn to 5000 on MEM R-151 to KEEZE INT/MEM 10.4 DME and hold, continue climb-in-hold to 5000.

MEMPHIS APP CON 119.1 291.6 (176°-355°) 125.8 338.3 (356°-175°)	MEMPHIS TOWER (Rwy 9-27) 118.3 257.8 (Rwys 18C-36C, 18L-36R) 119.7 257.8 (Rwy 18R-36L) 128.425 257.8	GND CON (Rwy 9-27) 121.0 379.2 (Rwys 18C-36C, 18L-36R) 121.9 379.2 (Rwy 18R-36L) 121.65 379.2
---	--	---

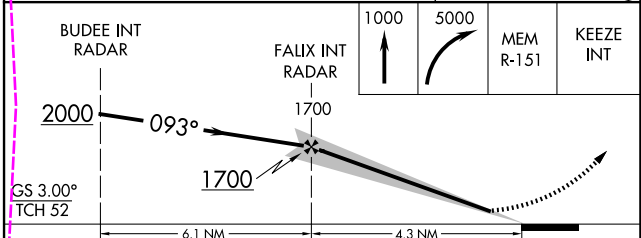
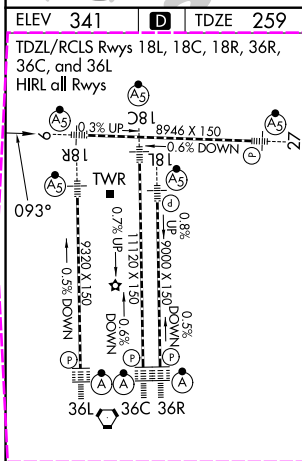
D-ATIS
127.75

RADAR REQUIRED



SE-1, 127 NOV 2025 to 25 DEC 2025

SE-1, 27 NOV 2025 to 25 DEC 2025



CATEGORY	A	B	C	D	E
S-ILS 9	466/24 207 (200-½)				
S-LOC 9	720/24	461 (400-½)	720/50	461 (400-1)	720/60 461 (400-1¼)
CIRCLING	940-1	599 (600-1)	940-1½ 599 (600-1½)	1020-2¼ 679 (700-2¼)	1140-2¾ 799 (800-2¾)

FAF to MAP 4.3 NM

Knots	60	90	120	150	180
Min:Sec	4:18	2:52	2:09	1:43	1:26

MEMPHIS, TENNESSEE
Amdt 27B 29MAR18

35°03'N-89°59'W

MEMPHIS INTL (MEM)

ILS or LOC RWY 9