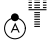


LOC/DME I-OHN 108.9 Chan 26	APP CRS 360°	Rwy Idg 9320 TDZE 321 Apt Elev 341
--	------------------------	--

ILS or LOC RWY 36L

MEMPHIS INTL (MEM)

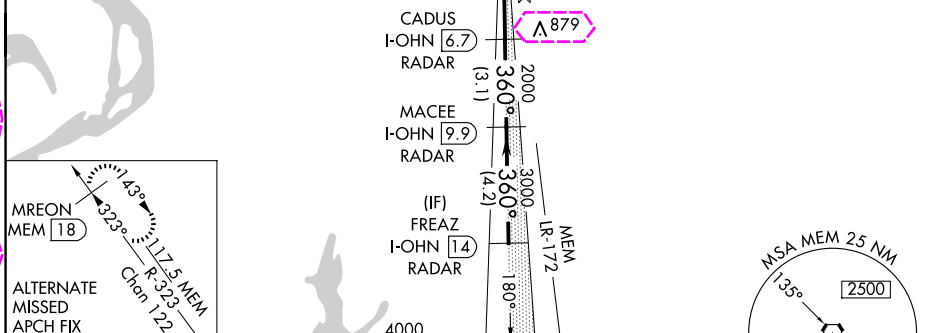
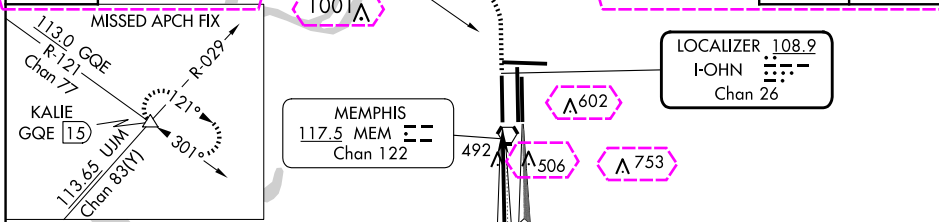
⚠ Simultaneous approach authorized with Rwy 36C/R. For inoperative ALSF, increase S-ILS 36L Cat E visibility to RVR 4000, and S-LOC 36L Cat E visibility to 1½. DME or RADAR required.

ALSF-2 

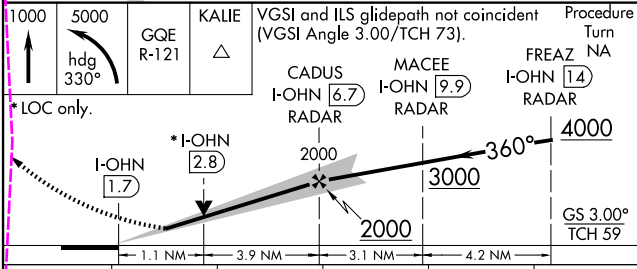
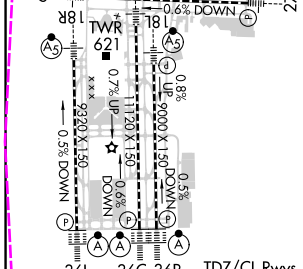
MISSED APPROACH: Climb to 1000 then climbing left turn to 5000 via heading 330° and GQE VOR/DME R-121 to KALIE INT/GQE 15 DME and hold, continue climb-in-hold to 5000.

MEMPHIS APP CON 119.1 291.6 (176°-355°) 125.8 338.3 (356°-175°)	MEMPHIS TOWER (Rwy 9-27) 118.3 257.8 (Rwys 18C-36C, 18L-36R) 119.7 257.8 (Rwy 18R-36L) 128.425 257.8	GND CON (Rwy 9-27) 121.0 379.2 (Rwys 18C-36C, 18L-36R) 121.9 379.2 (Rwy 18R-36L) 121.65 379.2
---	--	---

D-ATIS 127.75	113.0 GQE Chan 77	R-121	CLNC DEL 125.2	CPDLC
-------------------------	-------------------	-------	--------------------------	-------



ELEV 341	D	TDZE 321
----------	---	----------



CATEGORY	A	B	C	D	E
S-ILS 36L	521/18		200 (200-½)	521/24 200 (200-½)	
S-LOC 36L	760/24	439 (500-½)	760/40 439 (500-¾)	760/50	439 (500-1)
<input checked="" type="checkbox"/> CIRCLING	940-1	599 (600-1)	940-1½ 599 (600-1½)	1020-2¼ 679 (700-2¼)	1140-2¾ 799 (800-2¾)

SE-1, 30 OCT 2025 to 27 NOV 2025

SE-1, 30 OCT 2025 to 27 NOV 2025

MEMPHIS, TENNESSEE

AL-253 (FAA)

25331

ILS or LOC RWY 36L

MEMPHIS INTL (MEM)

LOC/DME I-OHN 108.9 Chan 26	APP CRS 360°	Rwy Ldg 9320 TDZE 321 Apt Elev 341
---	------------------------	---

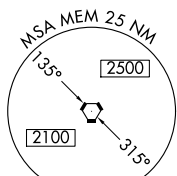
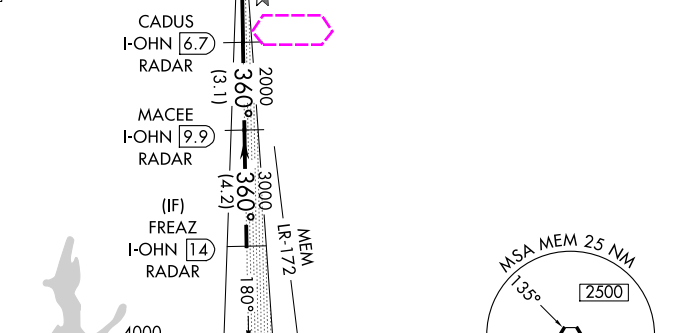
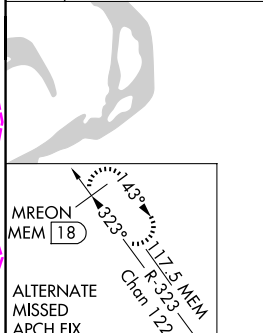
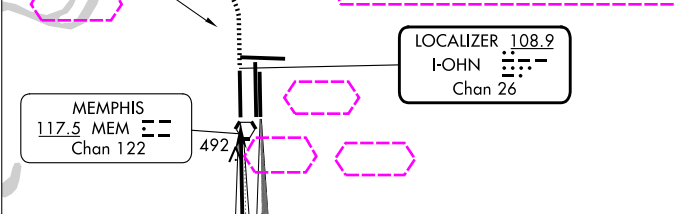
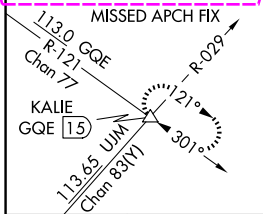
⚠ Simultaneous approach authorized with Rwy 36C/R. For inoperative ALSF, increase S-ILS 36L Cat E visibility to RVR 4000, and S-LOC 36L Cat E visibility to 1½. DME or RADAR required.



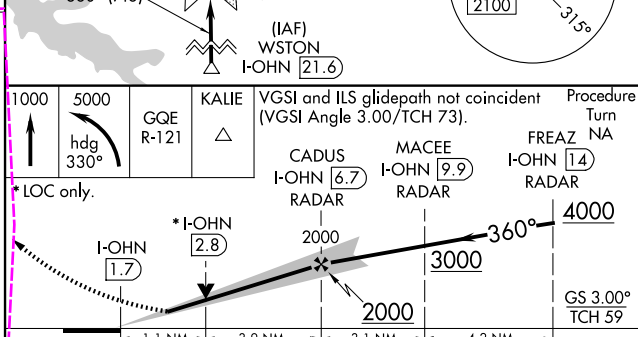
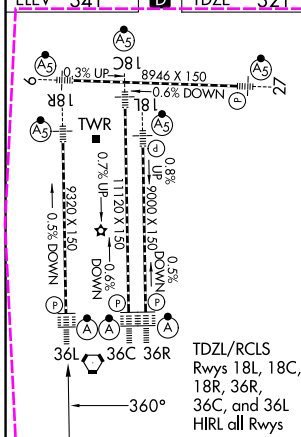
MISSED APPROACH: Climb to 1000 then climbing left turn to 5000 via heading 330° and GQE VOR/DME R-121 to KALIE INT/GQE 15 DME and hold, continue climb-in-hold to 5000.

MEMPHIS APP CON 119.1 291.6 (176°-355°) 125.8 338.3 (356°-175°)	MEMPHIS TOWER (Rwy 9-27) 118.3 257.8 (Rwys 18C-36C, 18L-36R) 119.7 257.8 (Rwy 18R-36L) 128.425 257.8	GND CON (Rwy 9-27) 121.0 379.2 (Rwys 18C-36C, 18L-36R) 121.9 379.2 (Rwy 18R-36L) 121.65 379.2
---	--	---

D-ATIS 127.75	113.0 GQE Chan 77	R-121
-------------------------	----------------------	-------



ELEV 341	D	TDZE 321
-----------------	----------	-----------------



CATEGORY	A	B	C	D	E
S-ILS 36L	521/18		200 (200-½)	521/24 200 (200-½)	
S-LOC 36L	760/24	439 (500-½)	760/40 439 (500-¾)	760/50	439 (500-1)
CIRCLING	940-1	599 (600-1)	940-1½ 599 (600-1½)	1020-2¼ 679 (700-2¼)	1140-2¾ 799 (800-2¾)

Knots	60	90	120	150	180
Min:Sec	5:00	3:20	2:30	2:00	1:40

MEMPHIS, TENNESSEE
Amdt 14E 21MAY20

35°03'N-89°59'W

MEMPHIS INTL (MEM)

ILS or LOC RWY 36L

SE-1, 27 NOV 2025 to 25 DEC 2025

SE-1, 27 NOV 2025 to 25 DEC 2025