



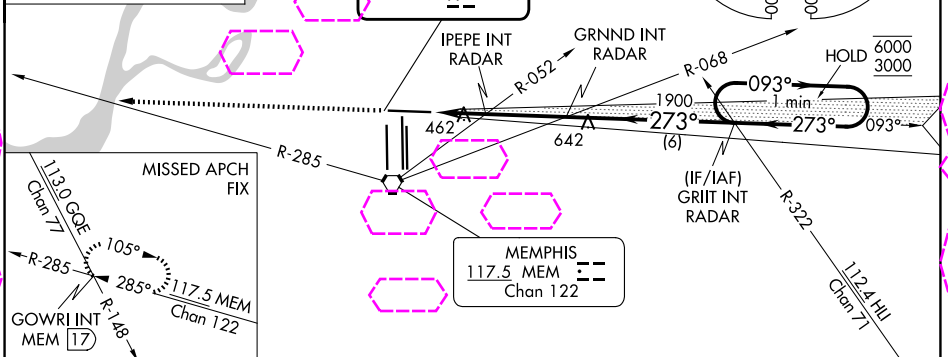
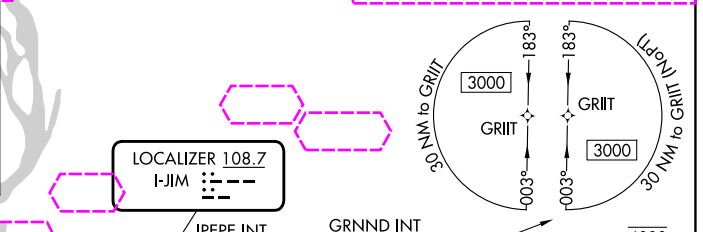
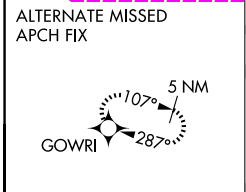
LOC I-JIM <b>108.7</b>	APP CRS <b>273°</b>	Rwy Ldg <b>8946</b>
		TDZE <b>292</b>
		Apt Elev <b>341</b>

# ILS or LOC RWY 27

MEMPHIS INTL (MEM)

RNAV 1-GPS or RADAR required for procedure entry.		MALS/R	MISSED APPROACH: Climb to 5000 and intercept MEM VORTAC R-285 to GOWRI INT/17 DME and hold, continue climb-in-hold to 5000.
<p>▼ For inop ALS, increase S-ILS Cat E visibility to RVR 4000, and S-LOC Cat E visibility to 2 SM, IPEPE fix minimums S-LOC Cat E visibility to 1/4 SM.</p> <p>▲ *RVR 1800 authorized with use of FD or AP or HUD to DA.</p>			
MEMPHIS APP CON		MEMPHIS TOWER	GND CON
<b>119.1 291.6</b> (176°-355°)	(Rwy 9-27)	<b>118.3 257.8</b>	(Rwy 9-27) <b>121.0 379.2</b>
<b>125.8 338.3</b> (356°-175°)	(Rwys 18C-36C, 18L-36R)	<b>119.7 257.8</b>	(Rwys 18C-36C, 18L-36R) <b>121.9 379.2</b>
	(Rwy 18R-36L)	<b>128.425 257.8</b>	(Rwy 18R-36L) <b>121.65 379.2</b>

D-ATIS <b>127.75</b>	
-------------------------	--



SE-1, 27 NOV 2025 to 25 DEC 2025

SE-1, 27 NOV 2025 to 25 DEC 2025

ELEV 341	TDZE 292	5000	MEM R-285	GOWRI INT	GRND INT RADAR	IPEPE INT RADAR	GRND INT RADAR	GRIIT INT RADAR	One Minute Holding Pattern
<p>MEMPHIS 117.5 MEM Chan 122</p> <p>MEMPHIS APP CON</p> <p>MEMPHIS TOWER</p> <p>GOWRI INT MEM 17</p> <p>MISSED APCH FIX</p> <p>113.0 GOWRI Chan 7</p> <p>117.5 MEM Chan 122</p> <p>112.4 HIRL Chan 7</p>									
<p>FAF to MAP 4.9 NM</p> <p>Knots 60 90 120 150 180</p> <p>Min:Sec 4:54 3:16 2:27 1:58 1:38</p>									
<p>HIRL all Rwys</p> <p>TDZL/RCLS Rwys 18L, 18C, 18R, 36R, 36C, and 36L</p>									
<p>MEMPHIS APP CON</p> <p>MEMPHIS TOWER</p> <p>GND CON</p>									
<p>ILS RWY 27</p> <p>S-ILS 27 * 492/24 200 (200-1/2)</p> <p>S-LOC 27 980/24 688 (700-1/2) 980-1 1/2 688 (700-1 1/2)</p> <p>CIRCLING 980-1 639 (700-1) 980-2 639 (700-2) 1020-2 1/4 679 (700-2 1/4) 1140-2 3/4 799 (800-2 3/4)</p> <p>IPEPE FIX MINIMUMS (DUAL VOR RECEIVERS OR RADAR REQUIRED)</p> <p>S-LOC 27 720/24 428 (400-1/2) 720/40 428 (400-3/4)</p> <p>CIRCLING 940-1 599 (600-1) 940-1 1/2 599 (600-1 1/2) 1020-2 1/4 679 (700-2 1/4) 1140-2 3/4 799 (800-2 3/4)</p>									