

ILS or LOC RWY 18R

MEMPHIS INTL (MEM)

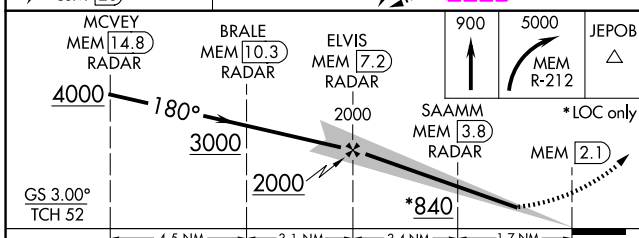
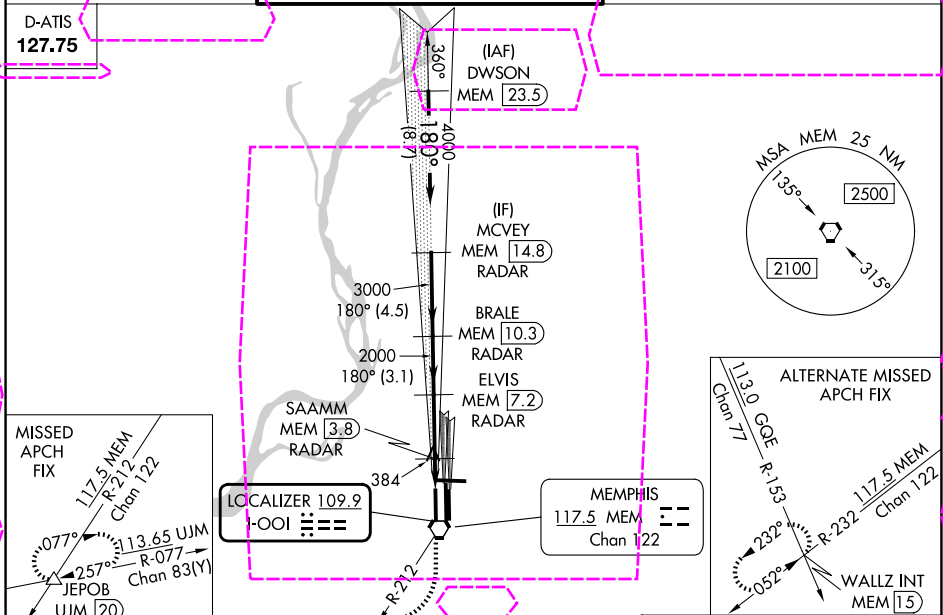
LOC I-OOI 109.9	APP CRS 180°	Rwy Ldg 9320
		TDZE 295
		Apt Elev 341

Radar required for procedure entry, DME or RADAR required.

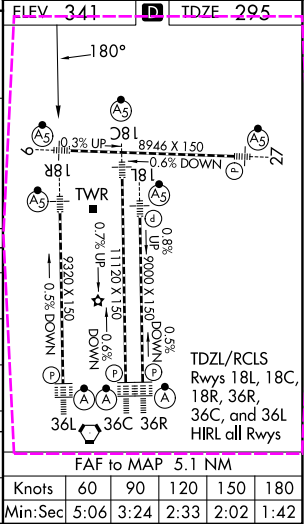
Simultaneous approach authorized. For inop ALS, increase S-ILS 18R Cat E visibility to RVR 4000, S-LOC 18R Cat E visibility to 2 SM, SAAMM fix minimums, increase S-LOC 18R Cat E visibility to 1½ SM.

MALSR MISSED APPROACH: Climb to 900 then climbing right turn to 5000 on MEM VORTAC R-212 to JEPOB INT/UJM 20 DME and hold.

MEMPHIS APP CON		MEMPHIS TOWER		GND CON	
119.1	291.6 (176°-355°)	(Rwy 9-27)	118.3 257.8	(Rwy 9-27)	121.0 379.2
125.8	338.3 (356°-175°)	(Rwys 18C-36C, 18L-36R)	119.7 257.8	(Rwys 18C-36C, 18L-36R)	121.9 379.2
		(Rwy 18R-36L)	128.425 257.8	(Rwy 18R-36L)	121.65 379.2



CATEGORY	A	B	C	D	E
S-ILS 18R	495/18 200 (200-½)				495/24 200 (200-½)
S-LOC 18R	840/24	545 (500-½)	840/50 545 (500-1)	840/60 545 (500-1¼)	840-1½ 545 (500-1½)
CIRCLING	940-1	599 (600-1)	940-1½ 599 (600-1½)	1020-2¼ 679 (700-2¼)	1140-2¾ 799 (800-2¾)
SAAMM FIX MINIMUMS (DME OR RADAR REQUIRED)					
S-LOC 18R	700/24	405 (400-½)	700/40 405 (400-¾)	700/50 405 (500-1)	
CIRCLING	940-1	599 (600-1)	940-1½ 599 (600-1½)	1020-2¼ 679 (700-2¼)	1140-2¾ 799 (800-2¾)



SE-1, 127 NOV 2025 to 25 DEC 2025

SE-1, 27 NOV 2025 to 25 DEC 2025