

MEMPHIS, TENNESSEE

AL-253 (FAA)

25107

LOC/DME I-EXS <b>111.15</b>	APP CRS <b>180°</b>	Rwy Idg <b>9000</b>
Chan <b>48(Y)</b>	TDZE <b>301</b>	Apt Elev <b>341</b>

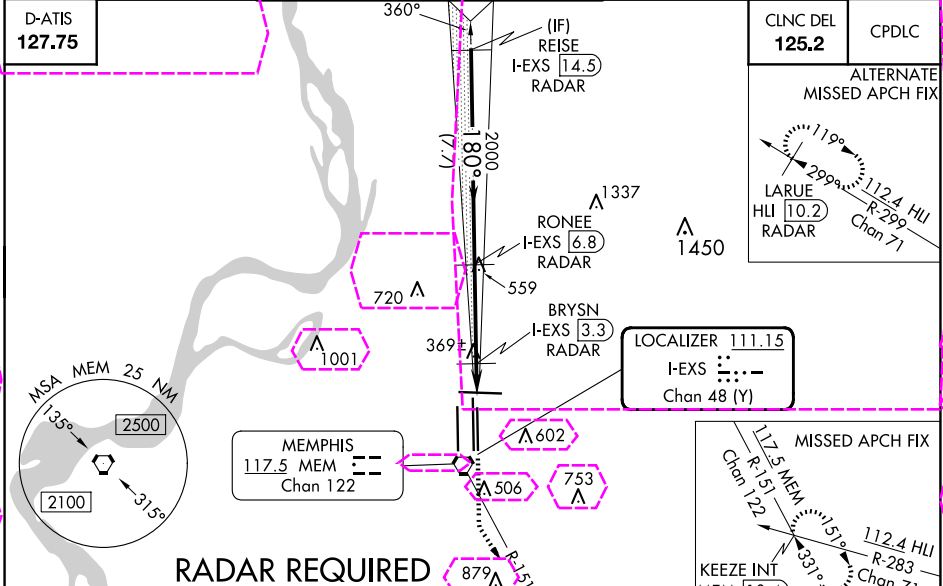
# ILS or LOC RWY 18L

MEMPHIS INTL (MEM)

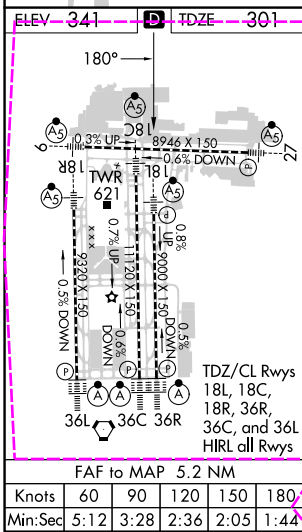
**Simultaneous approach authorized. DME or RADAR required.**  
For inop ALS, increase S-ILS 18L Cat E visibility to RVR 4000, S-LOC 18L Cat E visibility to 1 3/4 SM, BRYSN fix minimums, increase S-LOC 18L Cats D and E visibility to RVR 5000.

**MALS**  
**MISSED APPROACH:** Climb to 900 then climbing left turn to 5000 on MEM VORTAC R-151 to KEEZE INT/MEM 10.4 DME and hold, continue climb-in-hold to 5000.

MEMPHIS APP CON <b>119.1 291.6</b> (176°-355°) <b>125.8 338.3</b> (356°-175°)	MEMPHIS TOWER <b>118.3 257.8</b> (Rwys 18C-36C, 18L-36R) <b>119.7 257.8</b> (Rwy 18R-36L) <b>128.425 257.8</b>	GND CON <b>121.0 379.2</b> (Rwys 18C-36C, 18L-36R) <b>121.9 379.2</b> (Rwy 18R-36L) <b>121.65 379.2</b>
---	---	--



**RADAR REQUIRED**



CATEGORY	A	B	C	D	E
	501/18		200 (200-1/2)	501/24 200 (200-1/2)	
S-ILS 18L	501/18		200 (200-1/2)	501/24 200 (200-1/2)	
S-LOC 18L	820/24	519 (500-1/2)	820/50 519 (500-1)	820/60	519 (500-1/4)
CIRCLING	940-1	599 (600-1)	940-1 1/2 599 (600-1 1/2)	1020-2 1/4 679 (700-2 1/4)	1140-2 3/4 799 (800-2 3/4)
BRYSN FIX MINIMUMS					
S-LOC 18L	620/24	319 (300-1/2)	620/40	319 (300-3/4)	
CIRCLING	940-1	599 (600-1)	940-1 1/2 599 (600-1 1/2)	1020-2 1/4 679 (700-2 1/4)	1140-2 3/4 799 (800-2 3/4)

MEMPHIS, TENNESSEE  
Amdt 2D 29MAR18

35°03'N-89°59'W

# MEMPHIS INTL (MEM) ILS or LOC RWY 18L

SE-1, 30 OCT 2025 to 27 NOV 2025

SE-1, 30 OCT 2025 to 27 NOV 2025

MEMPHIS, TENNESSEE

AL-253 (FAA)

25331

LOC/DME I-EXS <b>111.15</b>	APP CRS <b>180°</b>	Rwy Ldg <b>9000</b>
Chan <b>48(Y)</b>	TDZE <b>301</b>	Apt Elev <b>341</b>

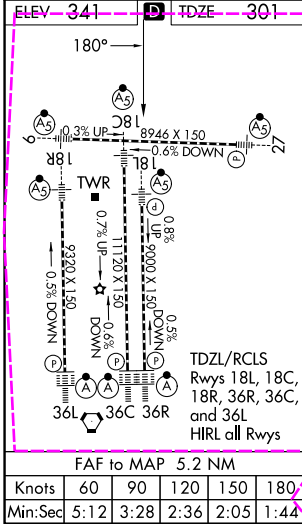
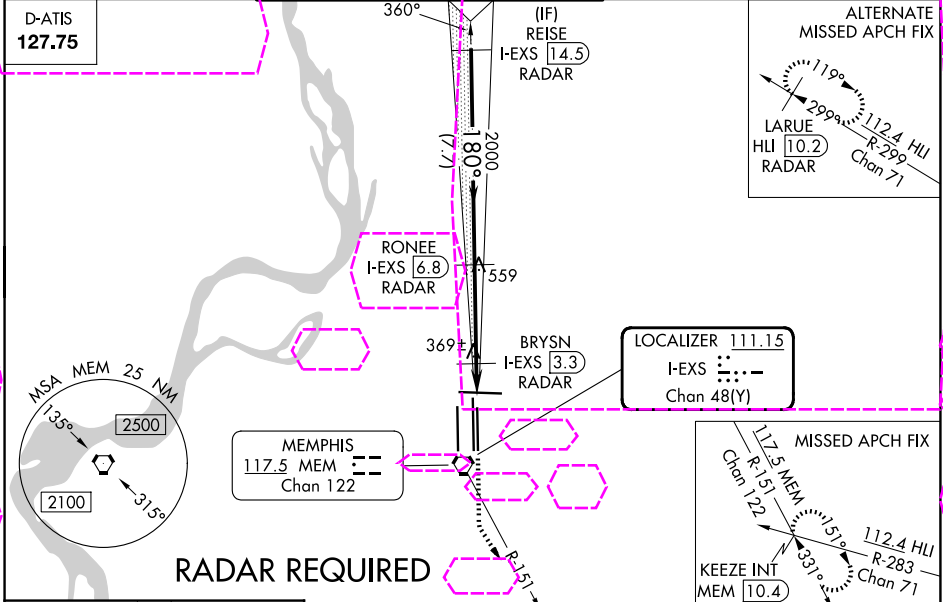
# ILS or LOC RWY 18L

MEMPHIS INTL (MEM)

**Simultaneous approach authorized. DME or RADAR required.**  
For inop ALS, increase S-ILS 18L Cat E visibility to RVR 4000, S-LOC 18L Cat E visibility to 1 3/4 SM, BRYSN fix minimums, increase S-LOC 18L Cats D and E visibility to RVR 5000.

**MISSED APPROACH:** Climb to 900 then climbing left turn to 5000 on MEM VORTAC R-151 to KEEZE INT/MEM 10.4 DME and hold, continue climb-in-hold to 5000.

MEMPHIS APP CON <b>119.1 291.6</b> (176°-355°) <b>125.8 338.3</b> (356°-175°)	MEMPHIS TOWER <b>118.3 257.8</b> (Rwys 18C-36C, 18L-36R) <b>119.7 257.8</b> (Rwy 18R-36L) <b>128.425 257.8</b>	GND CON <b>121.0 379.2</b> (Rwys 18C-36C, 18L-36R) <b>121.9 379.2</b> (Rwy 18R-36L) <b>121.65 379.2</b>
---	---	--



CATEGORY	A	B	C	D	E
	501/18		200 (200-1/2)	501/24 200 (200-1/2)	
S-ILS 18L	501/18		200 (200-1/2)	501/24 200 (200-1/2)	
S-LOC 18L	820/24	519 (500-1/2)	820/50 519 (500-1)	820/60	519 (500-1/4)
CIRCLING	940-1	599 (600-1)	940-1 1/2 599 (600-1 1/2)	1020-2 1/4 679 (700-2 1/4)	1140-2 3/4 799 (800-2 3/4)
BRYSN FIX MINIMUMS					
S-LOC 18L	620/24		319 (300-1/2)	620/40	319 (300-3/4)
CIRCLING	940-1	599 (600-1)	940-1 1/2 599 (600-1 1/2)	1020-2 1/4 679 (700-2 1/4)	1140-2 3/4 799 (800-2 3/4)

MEMPHIS, TENNESSEE  
Amdt 2D 29MAR18

35°03'N-89°59'W

# MEMPHIS INTL (MEM) ILS or LOC RWY 18L

SE-1, 127 NOV 2025 to 25 DEC 2025

SE-1, 27 NOV 2025 to 25 DEC 2025