

MEMPHIS, TENNESSEE

AL-253 (FAA)


25107

LOC I-SDU 111.95	APP CRS 180°	Rwy Idg 1120
		TDZE 290
		Apt Elev 341

ILS or LOC RWY 18C

MEMPHIS INTL (MEM)

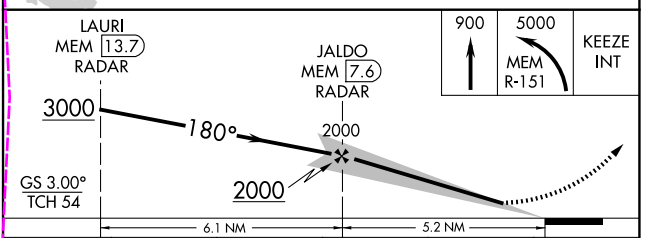
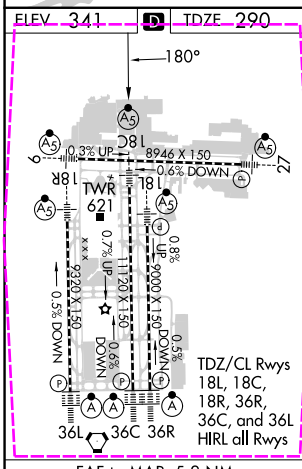
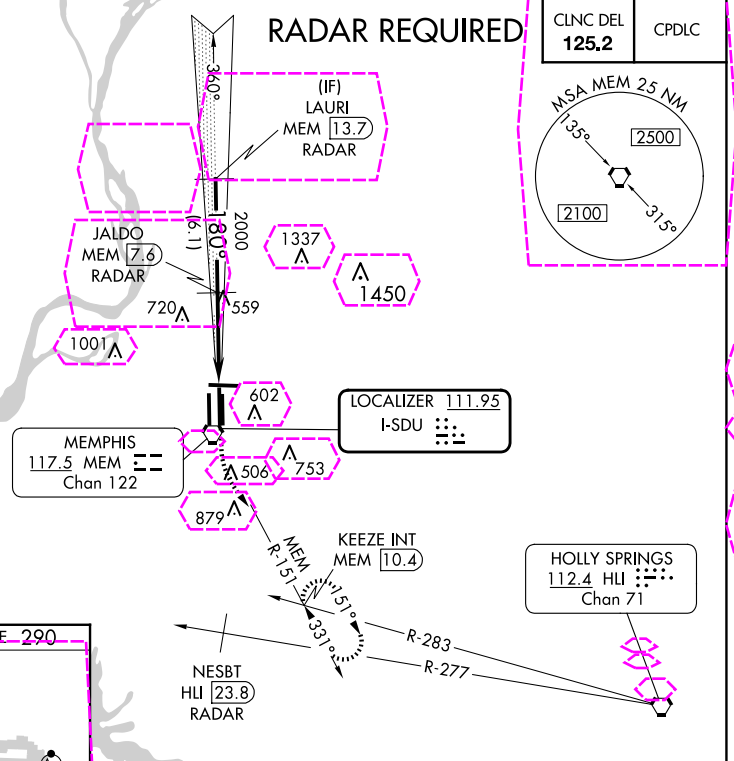
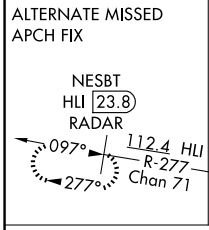
⚠ Simultaneous approach authorized.
⚠ DME or RADAR required.
 For inop ALS, increase S-ILS 18C all Cats visibility to 1/2 SM.

MALSR  MISSED APPROACH: Climb to 900 then climbing left turn to 5000 on MEM VORTAC R-151 to KEEZE INT/MEM 10.4 DME and hold, continue climb-in-hold to 5000.

MEMPHIS APP CON 119.1 291.6 (176°-355°) 125.8 338.3 (356°-175°)	MEMPHIS TOWER (Rwy 9-27) 118.3 257.8 (Rwys 18C-36C, 18L-36R) 119.7 257.8 (Rwy 18R-36L) 128.425 257.8	GND CON (Rwy 9-27) 121.0 379.2 (Rwys 18C-36C, 18L-36R) 121.9 379.2 (Rwy 18R-36L) 121.65 379.2
---	--	---

D-ATIS **127.75**

CLNC DEL **125.2** CPDLC



Knots	60	90	120	150	180
Min:Sec	5:12	3:28	2:36	2:05	1:44
CATEGORY	A	B	C	D	E
S-ILS 18C	657/40 367 (400-3/4)				
S-LOC 18C	860/24	570 (600-1/2)	860/50 570 (600-1)	860/60 570 (600-1 1/4)	860-1 1/2 570 (600-1 1/2)
CIRCLING	940-1	599 (600-1)	940-1 1/2 599 (600-1 1/2)	1020-2 1/4 679 (700-2 1/4)	1140-2 3/4 799 (800-2 3/4)

MEMPHIS, TENNESSEE
Amdt 1D 29MAR18

35°03'N-89°59'W

MEMPHIS INTL (MEM) ILS or LOC RWY 18C

SE-1, 30 OCT 2025 to 27 NOV 2025

SE-1, 30 OCT 2025 to 27 NOV 2025

MEMPHIS, TENNESSEE

AL-253 (FAA)


25331

LOC I-SDU 111.95	APP CRS 180°	Rwy Ldg 1120
		TDZE 290
		Apt Elev 341

ILS or LOC RWY 18C

MEMPHIS INTL (MEM)

⚠ Simultaneous approach authorized.
⚠ DME or RADAR required.
 For inop ALS, increase S-ILS 18C all Cats visibility to 1½ SM.

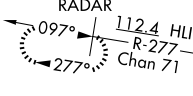
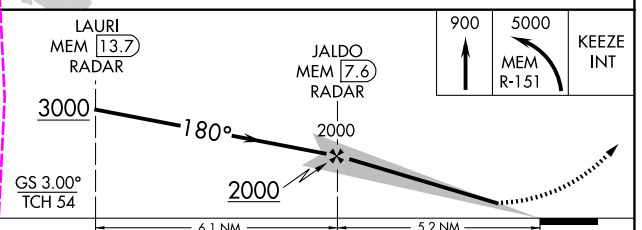
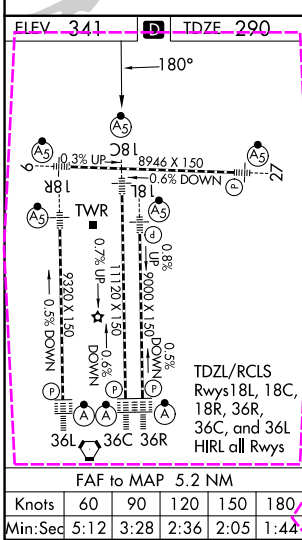
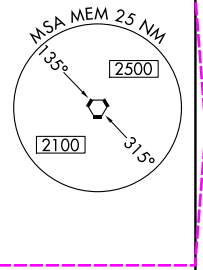
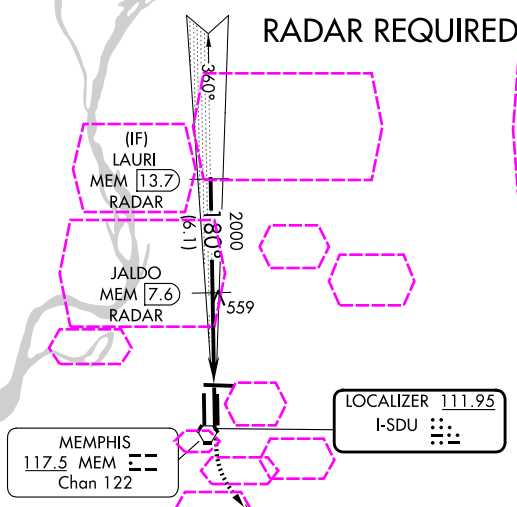
MALS

MISSED APPROACH: Climb to 900 then climbing left turn to 5000 on MEM VORTAC R-151 to KEEZE INT/MEM 10.4 DME and hold, continue climb-in-hold to 5000.

MEMPHIS APP CON 119.1 291.6 (176°-355°) 125.8 338.3 (356°-175°)	MEMPHIS TOWER (Rwy 9-27) 118.3 257.8 (Rwys 18C-36C, 18L-36R) 119.7 257.8 (Rwy 18R-36L) 128.425 257.8	GND CON (Rwy 9-27) 121.0 379.2 (Rwys 18C-36C, 18L-36R) 121.9 379.2 (Rwy 18R-36L) 121.65 379.2
---	--	---

D-ATIS
127.75

ALTERNATE MISSED APCH FIX

NESBT
HLI **23.8**
RADAR

CATEGORY	A	B	C	D	E
S-ILS 18C	657/40 367 (400-¾)				
S-LOC 18C	860/24	570 (600-½)	860/50 570 (600-1)	860/60 570 (600-1¼)	860-1½ 570 (600-1½)
CIRCLING	940-1	599 (600-1)	940-1½ 599 (600-1½)	1020-2¼ 679 (700-2¼)	1140-2¾ 799 (800-2¾)

MEMPHIS, TENNESSEE
 Amdt 1D 29MAR18

35°03'N-89°59'W

MEMPHIS INTL (MEM) ILS or LOC RWY 18C

SE-1, 127 NOV 2025 to 25 DEC 2025

SE-1, 27 NOV 2025 to 25 DEC 2025