

LOC/DME I-OHN 108.9 Chan 26	APP CRS 360°	Rwy Idg 9320
		TDZE 321
		Apt Elev 341

ILS RWY 36L (CAT II & III)

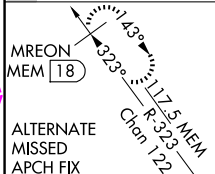
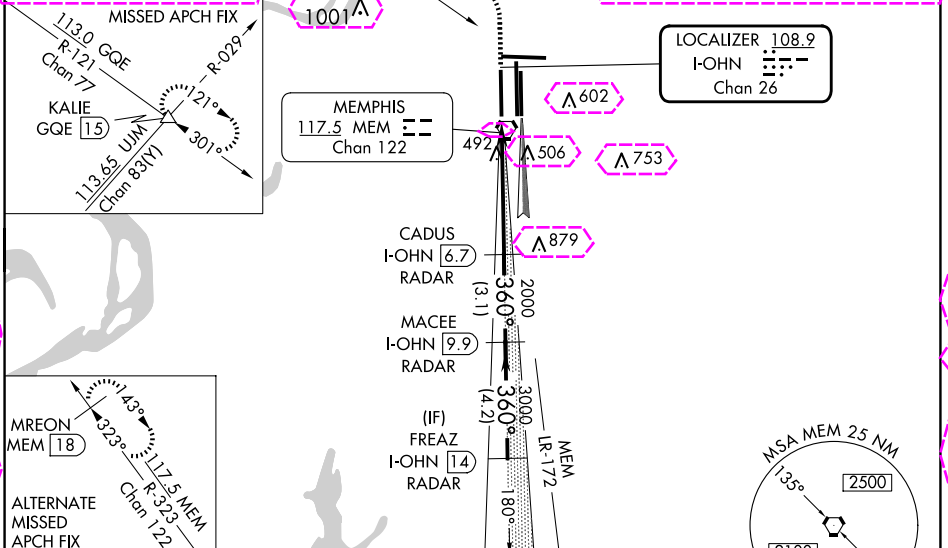
MEMPHIS INTL (MEM)

Simultaneous approach authorized with Rwy 36C/R.
DME or RADAR required.

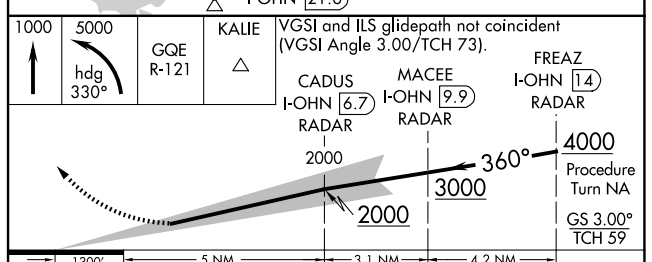
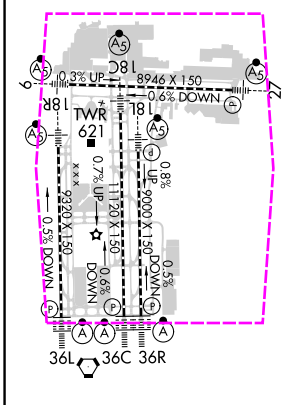
MISSED APPROACH: Climb to 1000 then climbing left turn to 5000 via heading 330° and GQE VOR/DME R-121 to KALIE INT/GQE 15 DME and hold, continue climb-in-hold to 5000.

MEMPHIS APP CON 119.1 291.6 (176°-355°) 125.8 338.3 (356°-175°)	MEMPHIS TOWER (Rwy 9-27) 118.3 257.8 (Rwys 18C-36C, 18L-36R) 119.7 257.8 (Rwy 18R-36L) 128.425 257.8	GND CON (Rwy 9-27) 121.0 379.2 (Rwys 18C-36C, 18L-36R) 121.9 379.2 (Rwy 18R-36L) 121.65 379.2
---	--	---

D-ATIS 127.75	113.0 GQE Chan 77	R-121	Δ 720	CLNC DEL 125.2	CPDLC
-------------------------	-------------------	-------	-------	--------------------------	-------



ELEV 341	D	TDZE 321
----------	---	----------



CATEGORY	A	B	C	D
S-ILS 36L	CAT II RA 100/12 100 DA 421			
S-ILS 36L	CAT IIIa	RVR 07		
S-ILS 36L	CAT IIIb	RVR 03		
S-ILS 36L	CAT IIIc	NA		

CATEGORY II & III ILS - SPECIAL AIRCREW & AIRCRAFT CERTIFICATION REQUIRED

SE-1, 30 OCT 2025 to 27 NOV 2025

SE-1, 30 OCT 2025 to 27 NOV 2025

MEMPHIS, TENNESSEE

AL-253 (FAA)

25331

LOC/DME I-OHN 108.9 Chan 26	APP CRS 360°	Rwy Ldg 9320
		TDZE 321
		Apt Elev 341

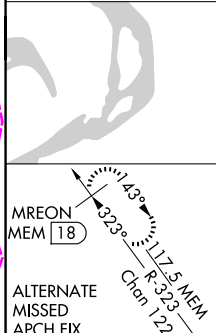
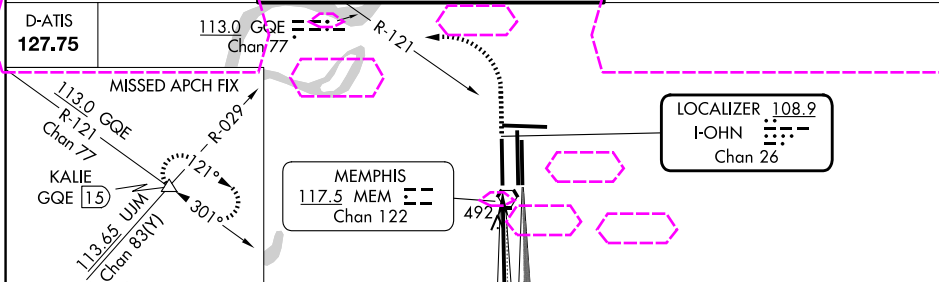
ILS RWY 36L (CAT II & III)

MEMPHIS INTL (MEM)

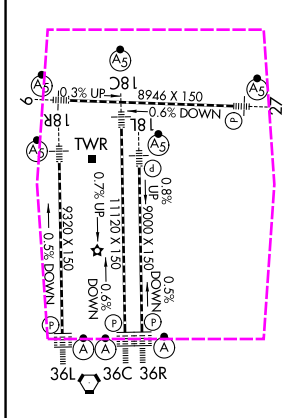
Simultaneous approach authorized with Rwy 36C/R.
DME or RADAR required.

MISSED APPROACH: Climb to 1000 then climbing left turn to 5000 via heading 330° and GQE VOR/DME R-121 to KALIE INT/GQE 15 DME and hold, continue climb-in-hold to 5000.

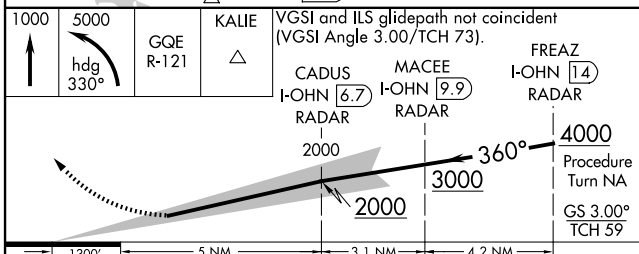
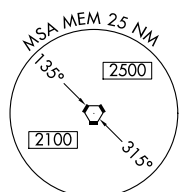
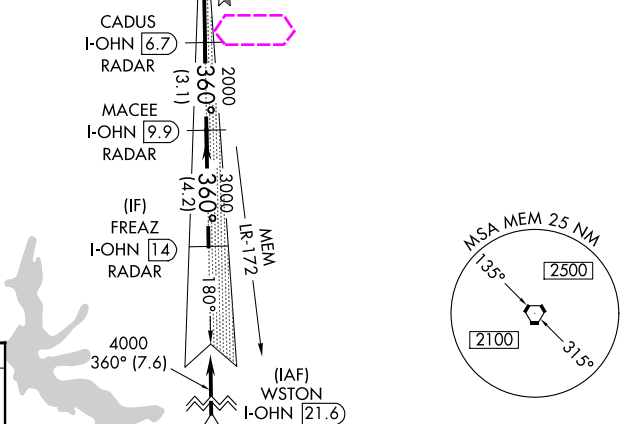
MEMPHIS APP CON 119.1 291.6 (176°-355°) 125.8 338.3 (356°-175°)	MEMPHIS TOWER (Rwy 9-27) 118.3 257.8 (Rwys 18C-36C, 18L-36R) 119.7 257.8 (Rwy 18R-36L) 128.425 257.8	GND CON (Rwy 9-27) 121.0 379.2 (Rwys 18C-36C, 18L-36R) 121.9 379.2 (Rwy 18R-36L) 121.65 379.2
---	--	---



ELEV 341	TDZE 321
----------	----------



TDZL/RCLS Rwys 18L, 18C, 18R, 36R, 36C, and 36L
HIRL all Rwys



CATEGORY	A	B	C	D
S-ILS 36L	CAT II RA 100/12 100 DA 421			
S-ILS 36L	CAT IIIa RVR 07			
S-ILS 36L	CAT IIIb RVR 03			
S-ILS 36L	CAT IIIc NA			

CATEGORY II & III ILS - SPECIAL AIRCREW & AIRCRAFT CERTIFICATION REQUIRED

MEMPHIS, TENNESSEE
Amdt 14E 21MAY20

35°03'N-89°59'W

MEMPHIS INTL (MEM)
ILS RWY 36L (CAT II & III)

SE-1, 127 NOV 2025 to 25 DEC 2025

SE-1, 27 NOV 2025 to 25 DEC 2025