



MEMPHIS, TENNESSEE

AL-253 (FAA)

25331

LOC/DME I-TSE <b>110.5</b> Chan <b>42</b>	APP CRS <b>360°</b>	Rwy Ldg <b>10715</b>
		TDZE <b>341</b>
		Apt Elev <b>341</b>

# ILS RWY 36C (CAT II & III)

MEMPHIS INTL (MEM)

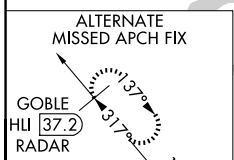
**▼** DME or RADAR required.  
**▲** Simultaneous approach authorized with Rwy 36L.

ALSF-2

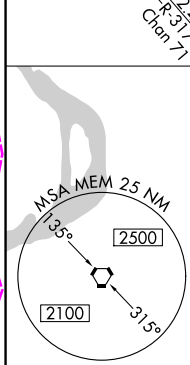
MISSED APPROACH: Climb to 3000 via MEM VORTAC R-360 to LAURI INT/MEM 13.7 DME and hold.

MEMPHIS APP CON <b>119.1 291.6</b> (176°-355°) <b>125.8 338.3</b> (356°-175°)	MEMPHIS TOWER (Rwy 9-27) <b>118.3 257.8</b> (Rwys 18C-36C, 18L-36R) <b>119.7 257.8</b> (Rwy 18R-36L) <b>128.425 257.8</b>	GND CON (Rwy 9-27) <b>121.0 379.2</b> (Rwys 18C-36C, 18L-36R) <b>121.9 379.2</b> (Rwy 18R-36L) <b>121.65 379.2</b>
---	--	---

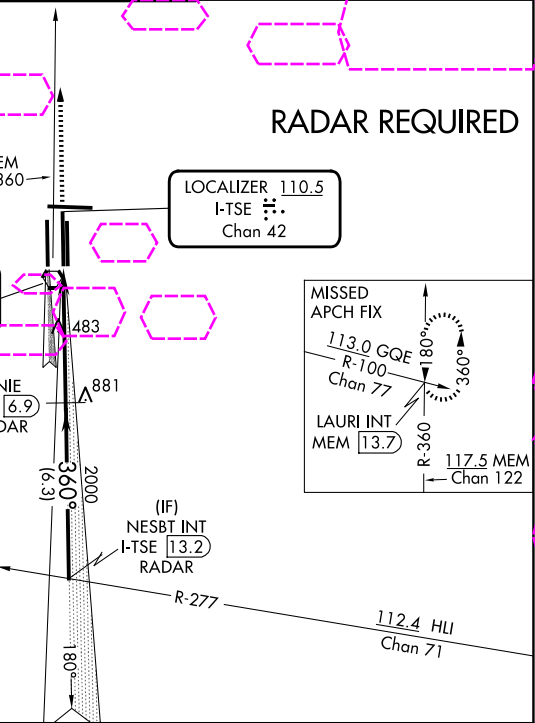
D-ATIS  
**127.75**



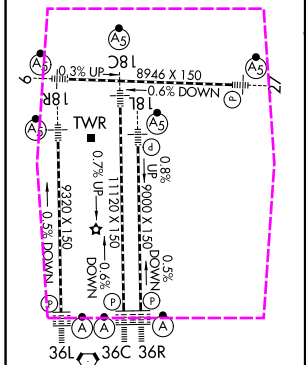
**RADAR REQUIRED**



MEMPHIS **117.5** MEM Chan 122



ELEV <b>341</b>	<b>D</b>	TDZE <b>341</b>
-----------------	----------	-----------------



CATEGORY	A	B	C	D
S-ILS 36C	CAT II RA 118/12 100 DA 441			
S-ILS 36C	CAT IIIa RVR 07			
S-ILS 36C	CAT IIIb RVR 03			
S-ILS 36C	CAT IIIc NA			

## CATEGORY II & III ILS - SPECIAL AIRCREW & AIRCRAFT CERTIFICATION REQUIRED

MEMPHIS, TENNESSEE  
Amdt 3F 10SEP20

35°03'N-89°59'W

MEMPHIS INTL (MEM)  
**ILS RWY 36C (CAT II & III)**

SE-1, 27 NOV 2025 to 25 DEC 2025

SE-1, 27 NOV 2025 to 25 DEC 2025