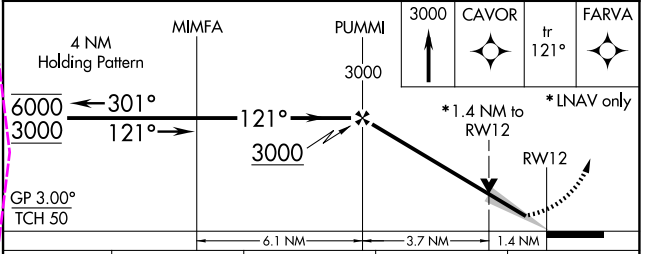
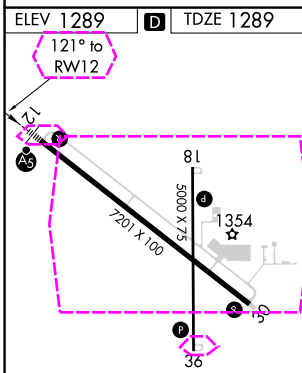
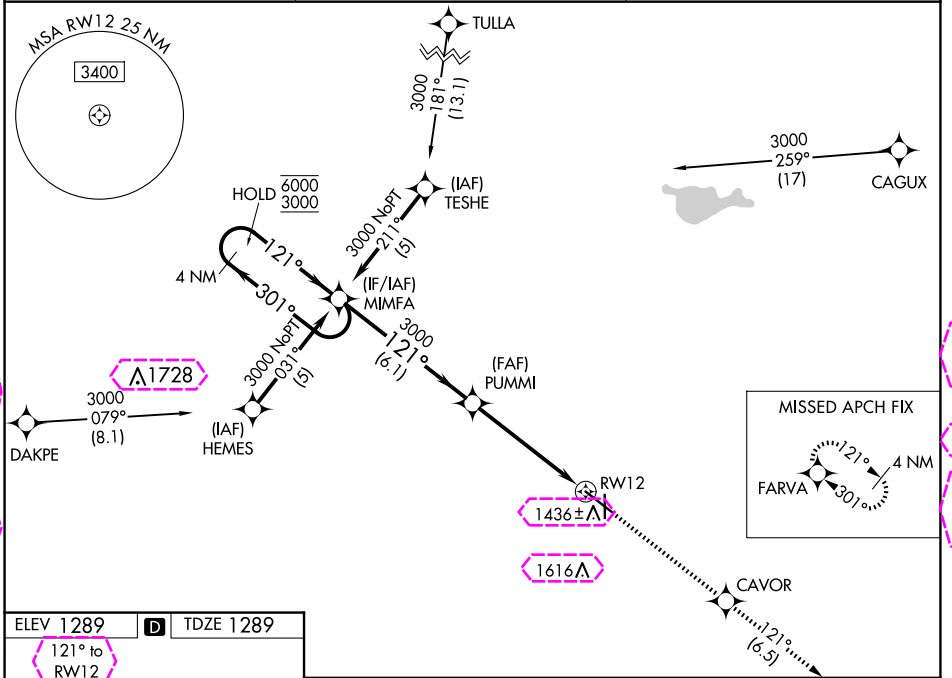


| | | |
|--|------------------------|-------------------------|
| WAAS CH 70314 W12A | APP CRS 121° | Rwy Idg 7201 |
| | | TDZE 1289 |
| | | App Elev 1289 |

RNAV (GPS) RWY 12

HURON RGNL (HON)

| | | | |
|---|---|---------------------------------|--|
| RNP APCH. | | MALSR | MISSED APPROACH: Climb to 3000 direct CAVOR and on track 121° to FARVA and hold. |
| <p>⚠ Circling Rwy 18, 36 NA at night. For uncompensated Baro-VNAV systems, LNAV/VNAV NA below -17°C or above 54°C. For inop ALS, increase LNAV/VNAV all CATs visibility to 1½ SM and LNAV Cat C/D to 1¾ SM.</p> | | | |
| ASOS 118.125 | MINNEAPOLIS CENTER 126.25 339.8 | UNICOM 123.0 (CTAF) 0 | |



| CATEGORY | A | B | C | D |
|-----------------|--------------------|---|---|---|
| LPV DA | 1489-½ 200 (200-½) | | | |
| LNAV/VNAV DA | 1699-¾ 410 (500-¾) | | | |
| LNAV MDA | 1780-½ 491 (500-½) | | 1780-1 491 (500-1) | |
| CIRCLING | 1820-1 531 (600-1) | | 1920-1¾ 631 (700-1¾) 1980-2¼ 691 (700-2¼) | |

HIRL Rwy 12-30
MIRL Rwy 18-36
REIL Rwy 18, 30 and 36

NC-1, 30 OCT 2025 to 27 NOV 2025

NC-1, 30 OCT 2025 to 27 NOV 2025

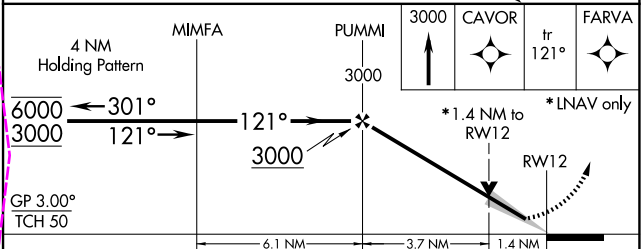
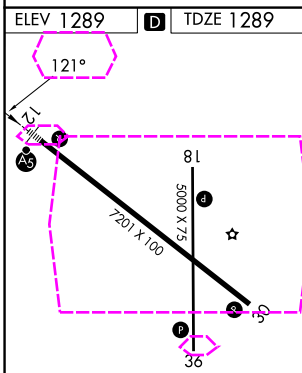
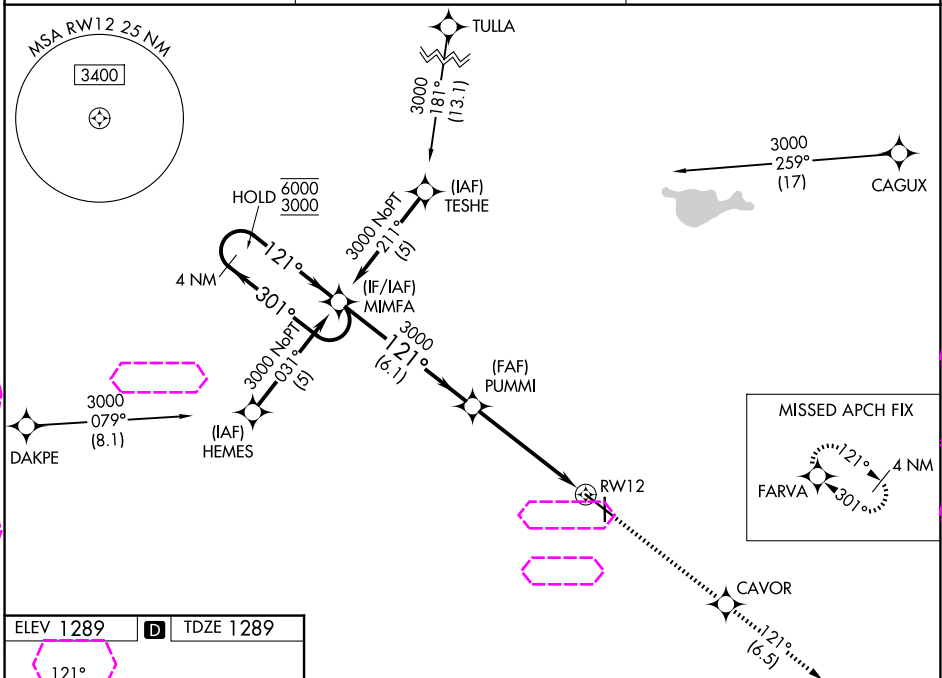
| | | | |
|--|------------------------|-----------------------------|---|
| WAAS CH 70314 W12A | APP CRS 121° | Rwy Ldg TDZE Apt Elev | 7201 1289 1289 |
|--|------------------------|-----------------------------|---|

RNAV (GPS) RWY 12

HURON RGNL (HON)

| | | |
|---|-------|--|
| RNP APCH. | MALSR | MISSED APPROACH: Climb to 3000 direct CAVOR and on track 121° to FARVA and hold. |
| <p>⚠ Circling Rwy 18, 36 NA at night. For uncompensated Baro-VNAV systems, LNAV/VNAV NA below -17°C or above 54°C. For inop ALS, increase LNAV/VNAV all CATs visibility to 1½ SM and LNAV Cat C/D to 1¾ SM.</p> | | |

| | | |
|------------------------|---|---------------------------------|
| ASOS 118.125 | MINNEAPOLIS CENTER 126.25 339.8 | UNICOM 123.0 (CTAF) 0 |
|------------------------|---|---------------------------------|



| CATEGORY | A | B | C | D |
|-----------------|--------------------|---|---|---|
| LPV DA | 1489-½ 200 (200-½) | | | |
| LNAV/VNAV DA | 1699-¾ 410 (500-¾) | | | |
| LNAV MDA | 1780-½ 491 (500-½) | | 1780-1 491 (500-1) | |
| CIRCLING | 1820-1 531 (600-1) | | 1920-1¾ 631 (700-1¾) 1980-2¼ 691 (700-2¼) | |

HIRL Rwy 12-30
MIRL Rwy 18-36
REIL Rwy 18, 30 and 36

NC-1, 27 NOV 2025 to 25 DEC 2025

NC-1, 27 NOV 2025 to 25 DEC 2025