

HUTCHINSON, KANSAS

AL-200 (FAA)

22363

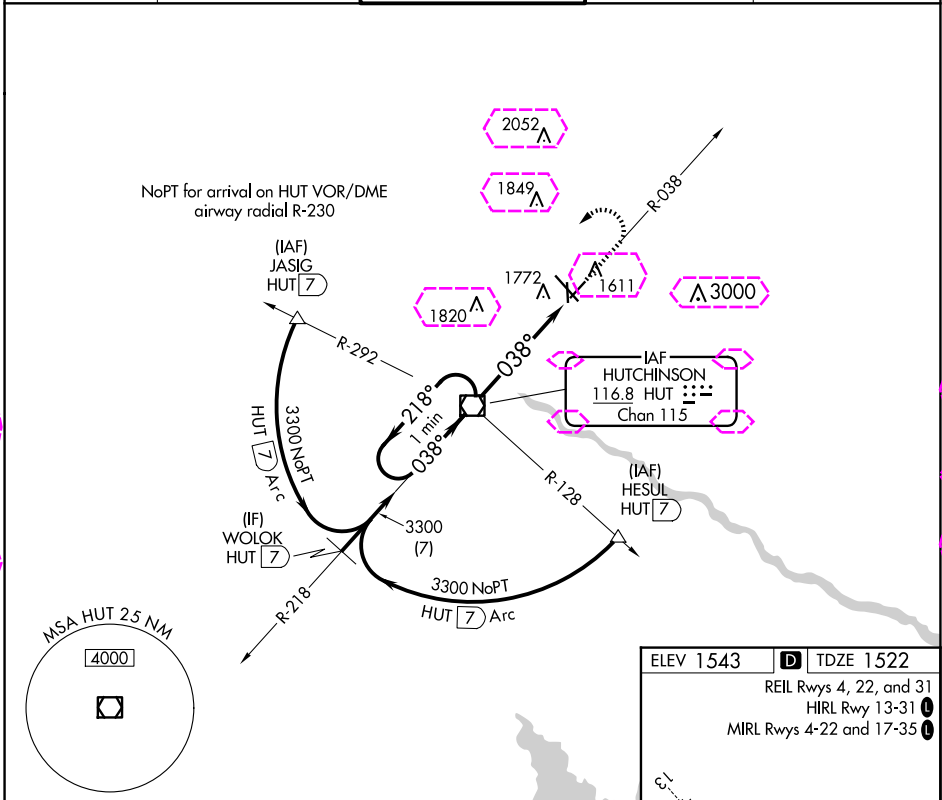
VOR/DME HUT 116.8 Chan 115	APP CRS 038°	Rwy Idg 4401 TDZE 1522 Apt Elev 1543
--	------------------------	---

VOR RWY 4

HUTCHINSON RGNL (HUT)

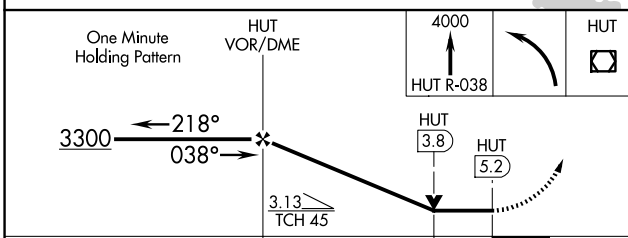
▼ Circling to Rwy 22 NA at night.
 MISSED APPROACH: Climb to 4000 on HUT VOR/DME R-038 then left turn direct HUT VOR/DME and hold.

ATIS 124.25	WICHITA APP CON 125.5 306.2	HUTCHINSON TOWER ★ 118.5 (CTAF) 363.0	GND CON 121.9	UNICOM 122.95
-----------------------	---------------------------------------	---	-------------------------	-------------------------



NC-2, 30 OCT 2025 to 27 NOV 2025

NC-2, 30 OCT 2025 to 27 NOV 2025



ELEV 1543 D TDZE 1522

REIL Rwy 4, 22, and 31
HIRL Rwy 13-31 I
MIRL Rwy 4-22 and 17-35 I

FAC to MAP 5.2 NM

Knots	60	90	120	150	180
Min:Sec	5:12	3:28	2:36	2:05	1:44

CATEGORY	A	B	C	D
S-4	2040-1	518 (500-1)	2040-1 $\frac{3}{8}$ 518 (500-1 $\frac{3}{8}$)	NA
C CIRCLING	2080-1	537 (600-1)	2200-1 $\frac{3}{4}$ 657 (700-1 $\frac{3}{4}$)	NA

HUTCHINSON, KANSAS
Amdt 20 07DEC17

38°04'N-97°52'W

HUTCHINSON RGNL (HUT) VOR RWY 4

HUTCHINSON, KANSAS

AL-200 (FAA)

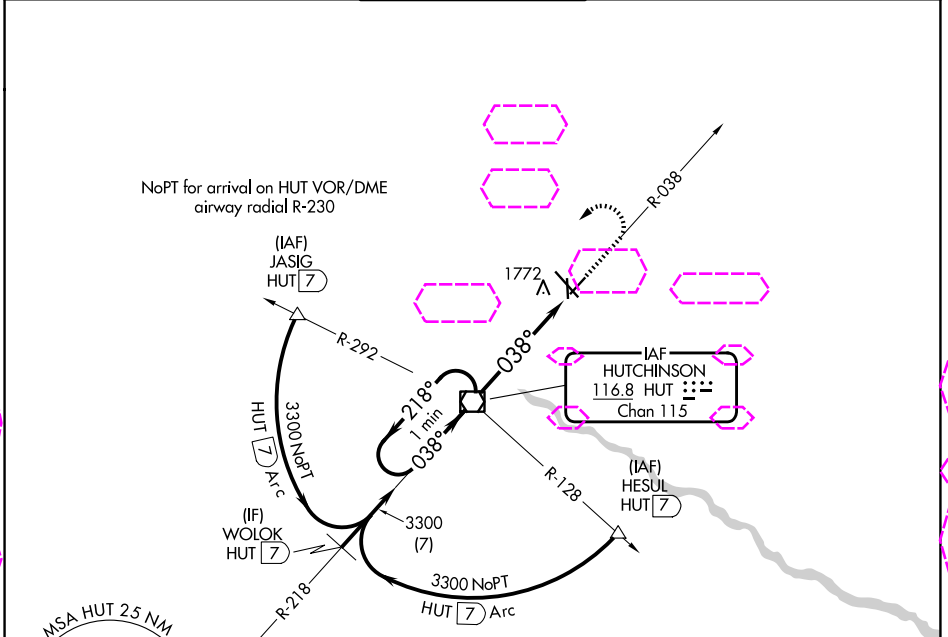
25331

VOR/DME HUT 116.8 Chan 115	APP CRS 038°	Rwy Ldg TDZE 1522 Apt Elev 1543
--	------------------------	---

VOR RWY 4
HUTCHINSON RGNL(HUT)

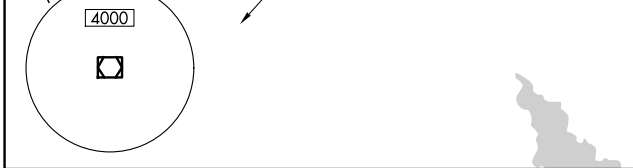
⚠ Circling to Rwy 22 NA at night. MISSED APPROACH: Climb to 4000 on HUT VOR/DME R-038 then left turn direct HUT VOR/DME and hold.

ATIS 124.25	WICHITA APP CON 125.5 306.2	HUTCHINSON TOWER * 118.5(CTAF) 363.0	GND CON 121.9	UNICOM 122.95
-----------------------	---------------------------------------	--	-------------------------	-------------------------



NC-2, 27 NOV 2025 to 25 DEC 2025

NC-2, 27 NOV 2025 to 25 DEC 2025



ELEV 1543 **D** TDZE 1522
REIL Rwy 4, 22, and 31
HIRL Rwy 13-31 **I**
MIRL Rwy 4-22 and 17-35 **I**

FAF to MAP 5.2 NM

Knots	60	90	120	150	180
Min:Sec	5:12	3:28	2:36	2:05	1:44

CATEGORY	A	B	C	D
S-4	2040-1	518 (500-1)	2040-1 $\frac{3}{8}$ 518 (500-1 $\frac{3}{8}$)	NA
CIRCLING	2080-1	537 (600-1)	2200-1 $\frac{3}{4}$ 657 (700-1 $\frac{3}{4}$)	NA

HUTCHINSON, KANSAS
Amdt 20 07DEC17

38°04'N-97°52'W

HUTCHINSON RGNL(HUT)
VOR RWY 4