

HUTCHINSON, KANSAS

AL-200 (FAA)

22363

WAAS CH 65741 W35A	APP CRS 353°	Rwy Idg TDZE Apt Elev	4012 1521 1543
--	------------------------	-----------------------------	---

RNAV (GPS) RWY 35

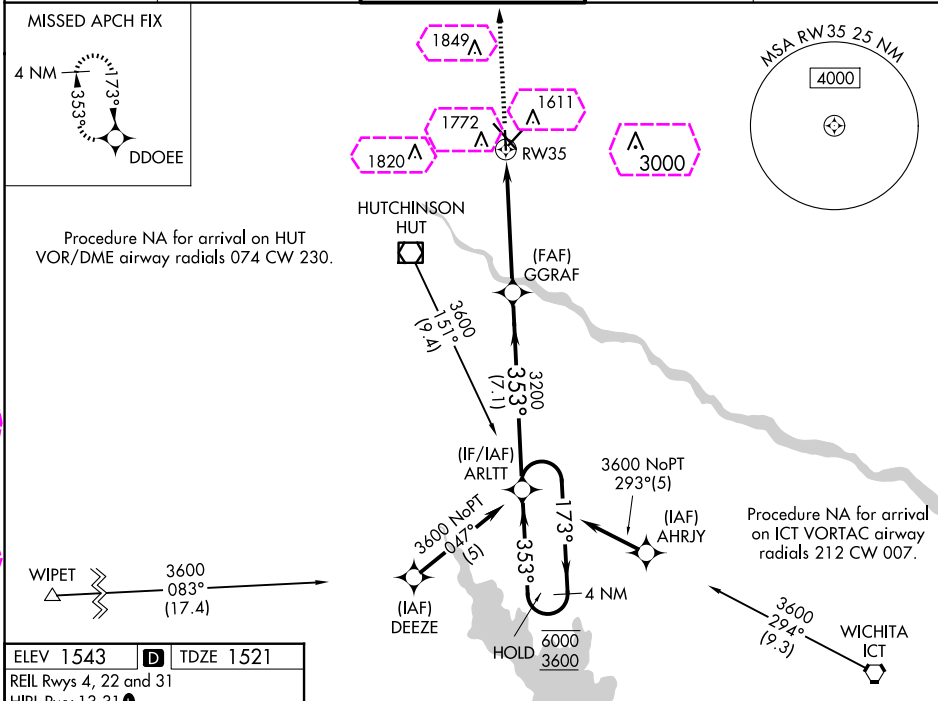
HUTCHINSON RGNL (HUT)

RNP APCH - GPS.

For uncompensated Baro-VNAV systems, LNAV/VNAV NA below -18°C or above 54°C.
Circling Rwy 22 NA at night.

MISSED APPROACH:
Climb to 3600 direct
DDOEE and hold.

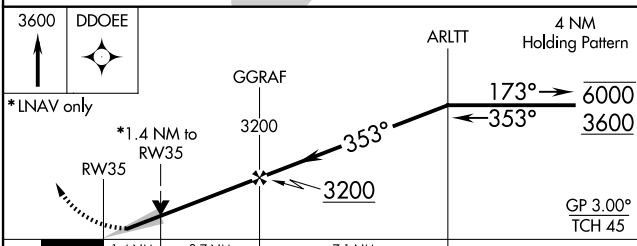
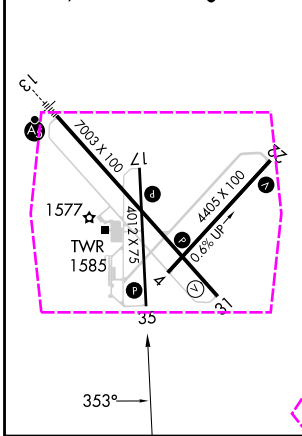
ATIS 124.25	WICHITA APP CON 125.5 306.2	HUTCHINSON TOWER * 118.5 (CTAF) 363.0	GND CON 121.9	UNICOM 122.95
-----------------------	---------------------------------------	---	-------------------------	-------------------------



NC-2, 30 OCT 2025 to 27 NOV 2025

NC-2, 30 OCT 2025 to 27 NOV 2025

ELEV 1543	D	TDZE 1521
REIL Rwy 4, 22 and 31		
HIRL Rwy 13-31		
MIRL Rwy 4-22 and 17-35		



CATEGORY	A	B	C	D
LPV DA	1721-1	200 (200-1)		NA
LNAV/VNAV DA	1887-1	366 (400-1)		NA
LNAV MDA	2000-1	479 (500-1)	2000-1 $\frac{3}{8}$ 479 (500-1 $\frac{3}{8}$)	NA
CIRCLING	2080-1	537 (600-1)	2200-1 $\frac{3}{4}$ 657 (700-1 $\frac{3}{4}$)	NA

HUTCHINSON, KANSAS
Orig-B 08SEP22

38°04'N-97°52'W

HUTCHINSON RGNL (HUT) RNAV (GPS) RWY 35

HUTCHINSON, KANSAS

AL-200 (FAA)

25331

WAAS CH 65741 W35A	APP CRS 353°	Rwy Ldg TDZE Apt Elev	4012 1521 1543
--	------------------------	-----------------------------	---

RNAV (GPS) RWY 35

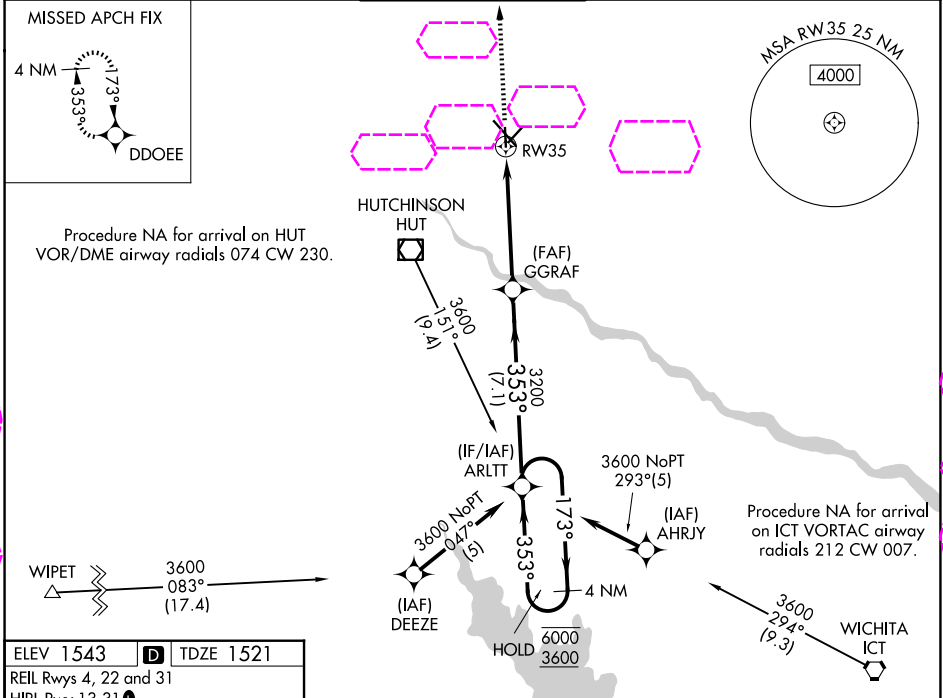
HUTCHINSON RGNL (HUT)

RNP APCH - GPS.

For uncompensated Baro-VNAV systems, LNAV/VNAV NA below -18°C or above 54°C.
Circling Rwy 22 NA at night.

MISSED APPROACH:
Climb to 3600 direct
DDOEE and hold.

ATIS 124.25	WICHITA APP CON 125.5 306.2	HUTCHINSON TOWER * 118.5 (CTAF) 363.0	GND CON 121.9	UNICOM 122.95
-----------------------	---------------------------------------	---	-------------------------	-------------------------

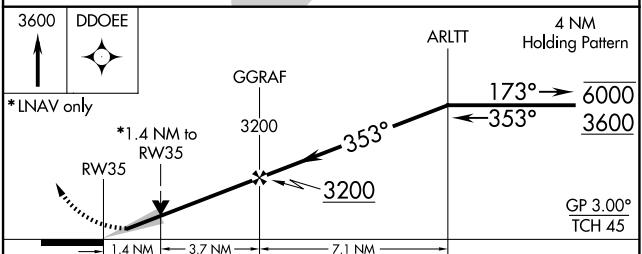
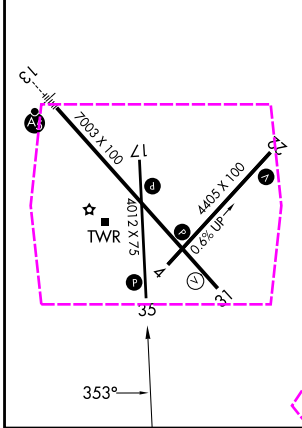


NC-2: 27 NOV 2025 to 25 DEC 2025

NC-2: 27 NOV 2025 to 25 DEC 2025

ELEV 1543	D	TDZE 1521
-----------	---	-----------

REIL Rwys 4, 22 and 31
HIRL Rwy 13-31
MIRL Rwys 4-22 and 17-35



CATEGORY	A	B	C	D
LPV DA	1721-1	200 (200-1)		NA
LNAV/VNAV DA	1887-1	366 (400-1)		NA
LNAV MDA	2000-1	479 (500-1)	2000-1 $\frac{3}{8}$ 479 (500-1 $\frac{3}{8}$)	NA
CIRCLING	2080-1	537 (600-1)	2200-1 $\frac{3}{4}$ 657 (700-1 $\frac{3}{4}$)	NA

HUTCHINSON, KANSAS
Orig-B 08SEP22

38°04'N-97°52'W

HUTCHINSON RGNL (HUT) RNAV (GPS) RWY 35