

HUTCHINSON, KANSAS

AL-200 (FAA)

22363

WAAS CH <b>53728</b> <b>W31A</b>	APP CRS <b>314°</b>	Rwy Idg TDZE Apt Elev	<b>7003</b> <b>1520</b> <b>1543</b>
--	------------------------	-----------------------------	---

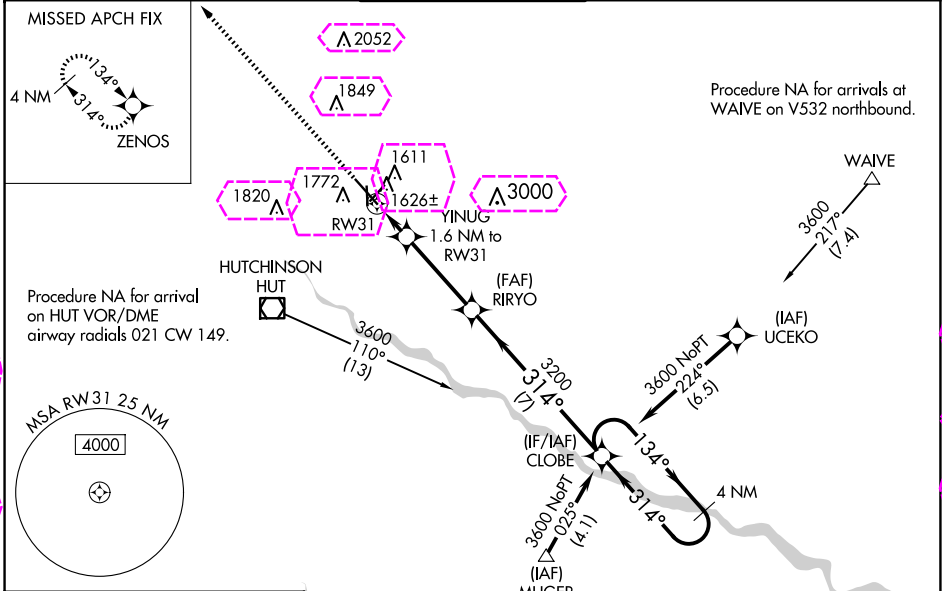
# RNAV (GPS) RWY 31

HUTCHINSON RGNL (HUT)

**⚠** Circling to Rwy 22 NA at night. For uncompensated Baro-VNAV systems, LNAV/VNAV NA below -18°C (0°F) or above 54°C (130°F). Rwy 31 helicopter visibility reduction below ¾ SM NA. DME/DME RNP-0.3 NA.

MISSED APPROACH: Climb to 3200 direct ZENOS and hold.

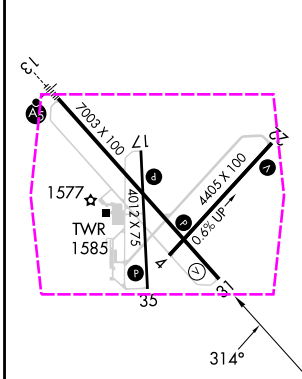
ATIS <b>124.25</b>	WICHITA APP CON <b>125.5 306.2</b>	HUTCHINSON TOWER * <b>118.5 (CTAF) 363.0</b>	GND CON <b>121.9</b>	UNICOM <b>122.95</b>
-----------------------	---------------------------------------	---	-------------------------	-------------------------



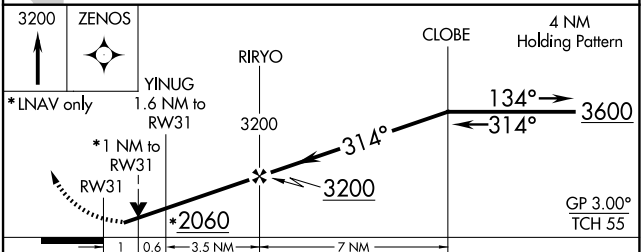
NC-2 30 OCT 2025 to 27 NOV 2025

NC-2 30 OCT 2025 to 27 NOV 2025

ELEV 1543	<b>D</b>	TDZE 1520
-----------	----------	-----------



REIL Rwy 4, 22 and 31  
HIRL Rwy 13-31  
MIRL Rwy 4-22 and 17-35



CATEGORY	A	B	C	D
LPV DA		1770-¾ 250 (300-¾)		
LNAV/VNAV DA		1812-⅞ 292 (300-⅞)		
LNAV MDA		1880-1 360 (400-1)		
<b>CIRCLING</b>	2080-1 537 (600-1)	2200-1¾ 657 (700-1¾)	2720-3 1177 (1200-3)	

HUTCHINSON, KANSAS  
Amdt 2 07DEC17

38°04'N-97°52'W

# HUTCHINSON RGNL (HUT) RNP (GPS) RWY 31

HUTCHINSON, KANSAS

AL-200 (FAA)

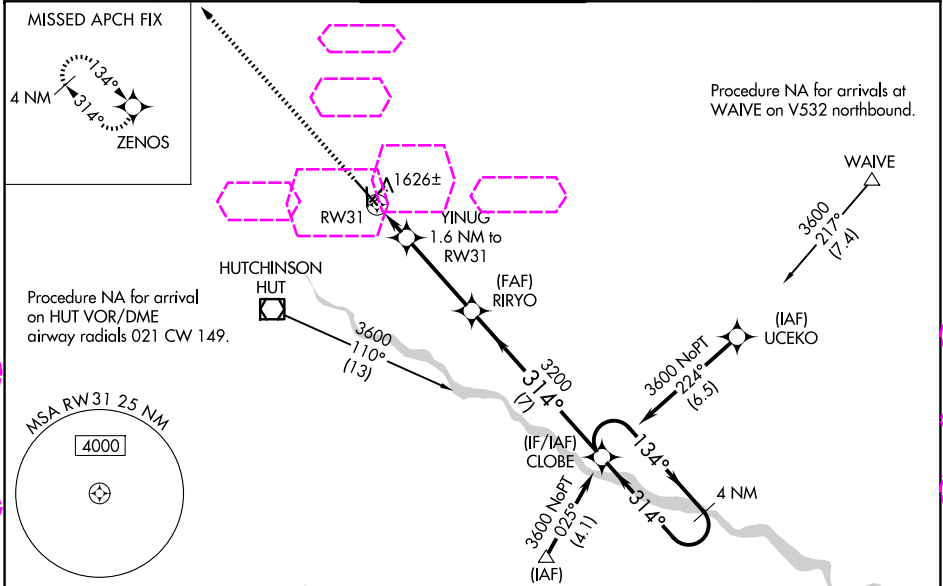
25331

WAAS CH <b>53728</b> <b>W31A</b>	APP CRS <b>314°</b>	Rwy Ldg <b>7003</b> TDZE <b>1520</b> Apt Elev <b>1543</b>
--	------------------------	---

# RNAV (GPS) RWY 31

HUTCHINSON RGNL (HUT)

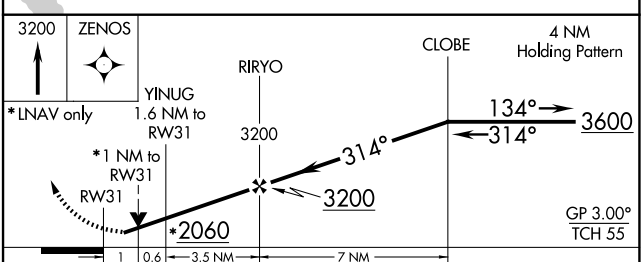
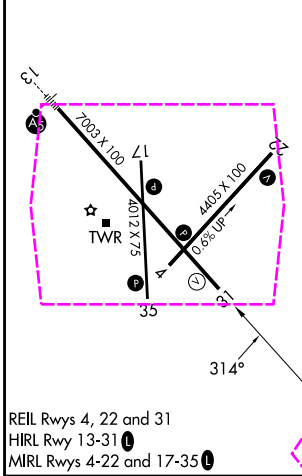
<p><b>⚠</b> Circling to Rwy 22 NA at night. For uncompensated Baro-VNAV systems, LNAV/VNAV NA below -18°C (0°F) or above 54°C (130°F). Rwy 31 helicopter visibility reduction below ¾ SM NA. DME/DME RNP-0.3 NA.</p>		<p>MISSED APPROACH: Climb to 3200 direct ZENOS and hold.</p>		
<p>ATIS <b>124.25</b></p>	<p>WICHITA APP CON <b>125.5 306.2</b></p>	<p>HUTCHINSON TOWER * <b>118.5 (CTAF) 363.0</b></p>	<p>GND CON <b>121.9</b></p>	<p>UNICOM <b>122.95</b></p>



NC-2 27 NOV 2025 to 25 DEC 2025

NC-2 27 NOV 2025 to 25 DEC 2025

ELEV 1543	<b>D</b>	TDZE 1520
-----------	----------	-----------



CATEGORY	A	B	C	D
LPV DA		1770-¾ 250 (300-¾)		
LNAV/VNAV DA		1812-⅞ 292 (300-⅞)		
LNAV MDA		1880-1 360 (400-1)		
<b>CIRCLING</b>	2080-1	537 (600-1)	2200-1¾ 657 (700-1¾)	2720-3 1177 (1200-3)

HUTCHINSON, KANSAS  
Amdt 2 07DEC17

38°04'N-97°52'W

# HUTCHINSON RGNL (HUT) RNAV (GPS) RWY 31