

HUTCHINSON, KANSAS

AL-200 (FAA)

22363

APP CRS <b>218°</b>	Rwy Idg <b>4401</b>
	TDZE <b>1543</b>
	Apt Elev <b>1543</b>

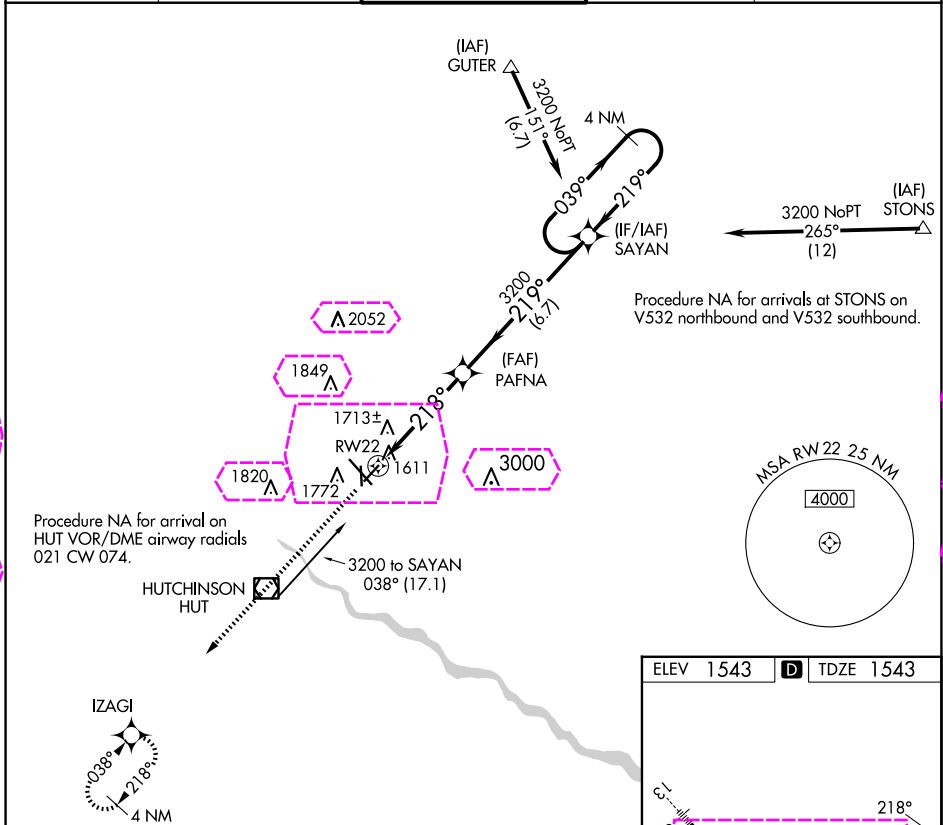
# RNAV (GPS) RWY 22

HUTCHINSON RGNL (HUT)

**▼** Rwy 22 helicopter visibility reduction below 1 SM NA. DME/DME RNP-0.3 NA. Straight-in and Circling Rwy 22 NA at night.

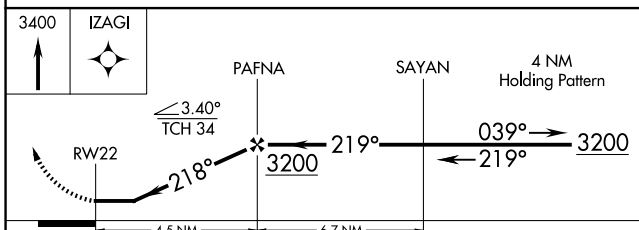
MISSED APPROACH: Climb to 3400 direct IZAGI and hold.

ATIS <b>124.25</b>	WICHITA APP CON <b>125.5 306.2</b>	HUTCHINSON TOWER* <b>118.5 (CTAF) 363.0</b>	GND CON <b>121.9</b>	UNICOM <b>122.95</b>
-----------------------	---------------------------------------	--	-------------------------	-------------------------



NC-2, 30 OCT 2025 to 27 NOV 2025

NC-2, 30 OCT 2025 to 27 NOV 2025



ELEV 1543	<b>D</b> TDZE 1543
-----------	--------------------

REIL Rwy 4, 22, and 31  
HIRL Rwy 13-31  
MIRL Rwy 4-22 and 17-35

CATEGORY	A	B	C	D
LNVA MDA	1980-1	437 (500-1)	1980-1¼ 437 (500-1¼)	NA
<b>C</b> CIRCLING	2080-1	537 (600-1)	2200-1¾ 657 (700-1¾)	NA

HUTCHINSON, KANSAS  
Amdt 1 07DEC17

38°04'N-97°52'W

# HUTCHINSON RGNL (HUT) RNAV (GPS) RWY 22

HUTCHINSON, KANSAS

AL-200 (FAA)

25331

APP CRS <b>218°</b>	Rwy Ldg TDZE Apt Elev	<b>4401</b> <b>1543</b> <b>1543</b>
------------------------	-----------------------------	---

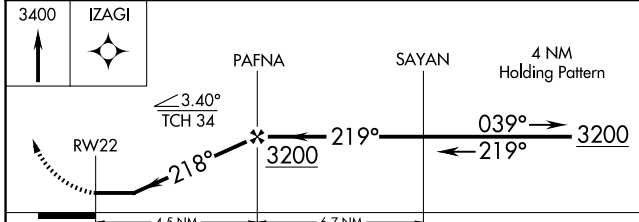
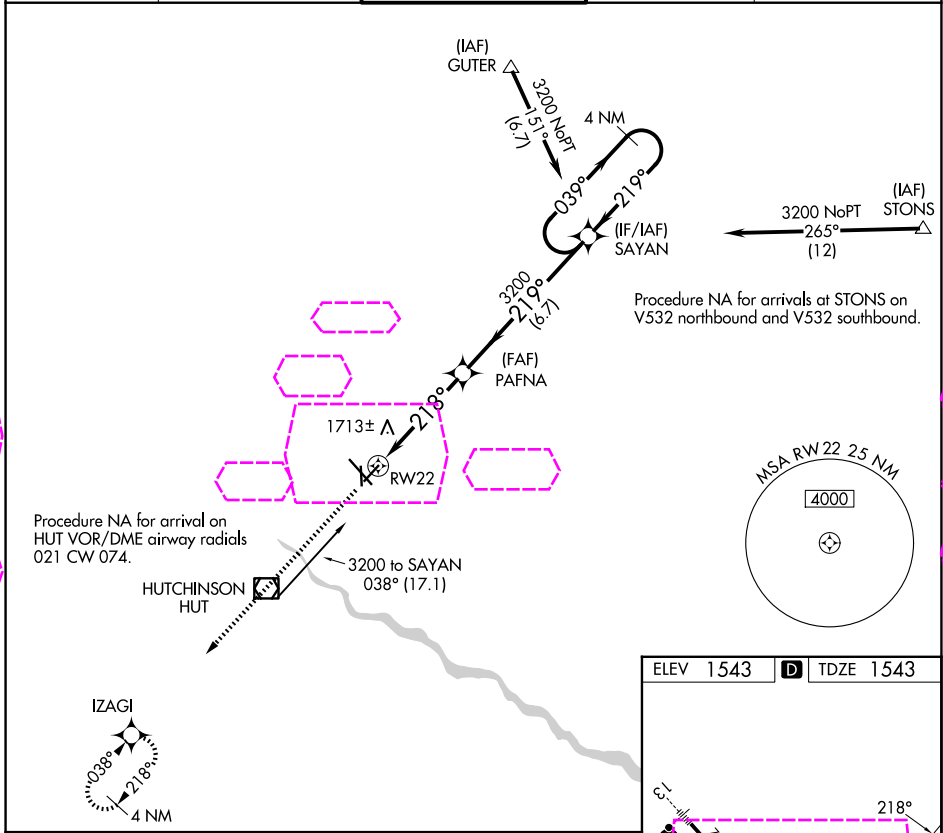
# RNAV (GPS) RWY 22

HUTCHINSON RGNL (HUT)

**▼** Rwy 22 helicopter visibility reduction below 1 SM NA. DME/DME RNP-0.3 NA. Straight-in and Circling Rwy 22 NA at night.

MISSED APPROACH: Climb to 3400 direct IZAGI and hold.

ATIS <b>124.25</b>	WICHITA APP CON <b>125.5 306.2</b>	HUTCHINSON TOWER * <b>118.5 (CTAF) 363.0</b>	GND CON <b>121.9</b>	UNICOM <b>122.95</b>
-----------------------	---------------------------------------	---	-------------------------	-------------------------



ELEV 1543	<b>D</b> TDZE 1543
-----------	--------------------

7003 X 100 218°

4012 X 75 TWY

4405 X 100 218°

0.6% UP

35 31

REIL Rwy 4, 22, and 31  
HIRL Rwy 13-31  
MIRL Rwy 4-22 and 17-35

CATEGORY	A	B	C	D
LNVA MDA	1980-1	437 (500-1)	1980-1¼ 437 (500-1¼)	NA
<b>CIRCLING</b>	2080-1	537 (600-1)	2200-1¾ 657 (700-1¾)	NA

HUTCHINSON, KANSAS  
Amdt 1 07DEC17

38°04'N-97°52'W

# HUTCHINSON RGNL (HUT) RNAV (GPS) RWY 22

NC-2, 127 NOV 2025 to 25 DEC 2025

NC-2, 27 NOV 2025 to 25 DEC 2025