

HUTCHINSON, KANSAS

AL-200 (FAA)

22363

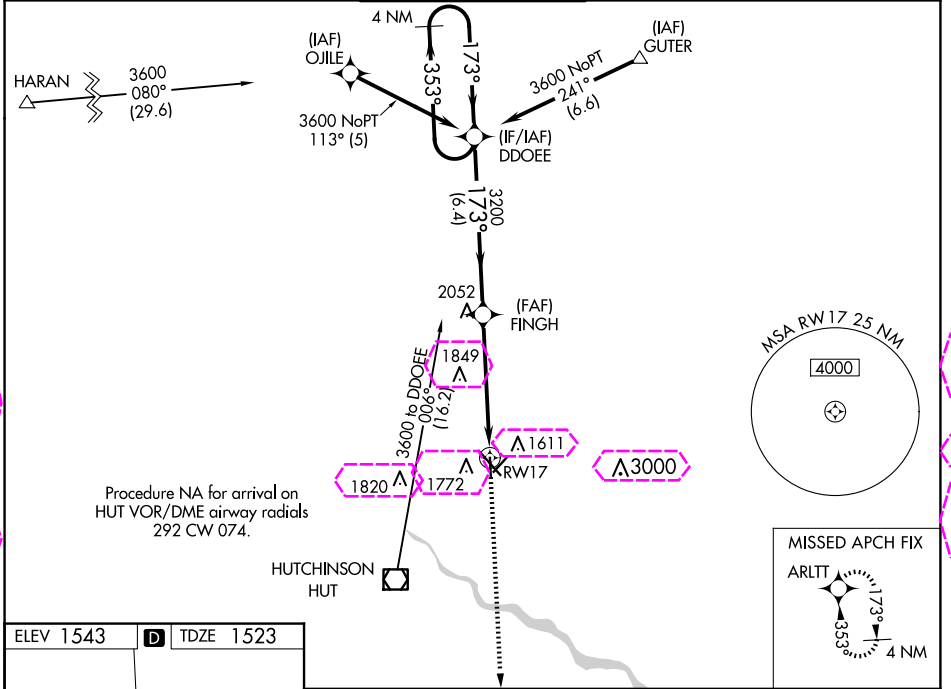
WAAS CH 81941 W17A	APP CRS 173°	Rwy Idg 4012 TDZE 1523 Apt Elev 1543
--	------------------------	---

RNAV (GPS) RWY 17

HUTCHINSON RGNL (HUT)

V Circling to Rwy 22 NA at night. For uncompensated Baro-VNAV systems, LNAV/VNAV NA below -18°C (0°F) or above 54°C (130°F). DME/DME RNP-0.3 NA. MISSED APPROACH: Climb to 3600 direct ARLTT and hold.

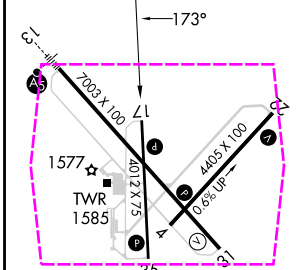
ATIS 124.25	WICHITA APP CON 125.5 306.2	HUTCHINSON TOWER * 118.5 (CTAF) 363.0	GND CON 121.9	UNICOM 122.95
-----------------------	---------------------------------------	---	-------------------------	-------------------------



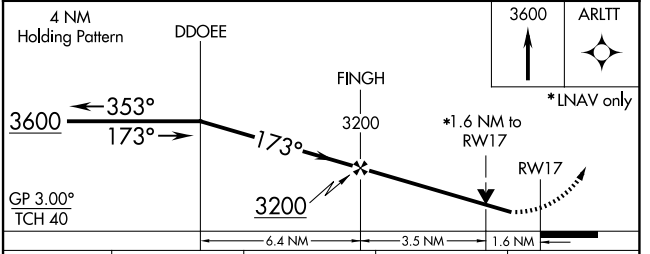
NC-2, 30 OCT 2025 to 27 NOV 2025

NC-2, 30 OCT 2025 to 27 NOV 2025

ELEV 1543	D	TDZE 1523
-----------	----------	-----------



REIL Rwy 4, 22 and 31 HIRL Rwy 13-31 MIRL Rwy 4-22 and 17-35	C CIRCLING
--	-------------------



CATEGORY	A	B	C	D
LPV DA	1889-1	366 (400-1)		NA
LNAV/VNAV DA	2078-1 $\frac{5}{8}$	555 (600-1 $\frac{5}{8}$)		NA
LNAV MDA	2060-1	537 (600-1)	2060-1 $\frac{1}{2}$ 537 (600-1 $\frac{1}{2}$)	NA
C CIRCLING	2080-1	537 (600-1)	2200-1 $\frac{3}{4}$ 657 (700-1 $\frac{3}{4}$)	NA

HUTCHINSON, KANSAS
Orig 07DEC17

38°04'N-97°52'W

HUTCHINSON RGNL (HUT)

RNAV (GPS) RWY 17

HUTCHINSON, KANSAS

AL-200 (FAA)

25331

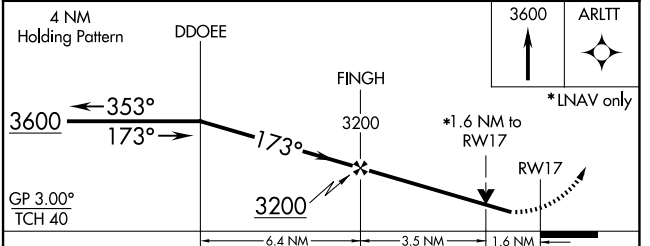
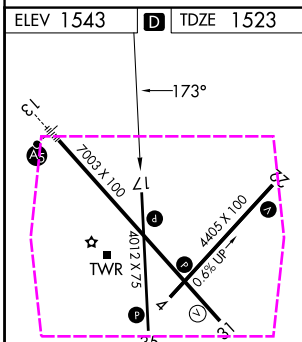
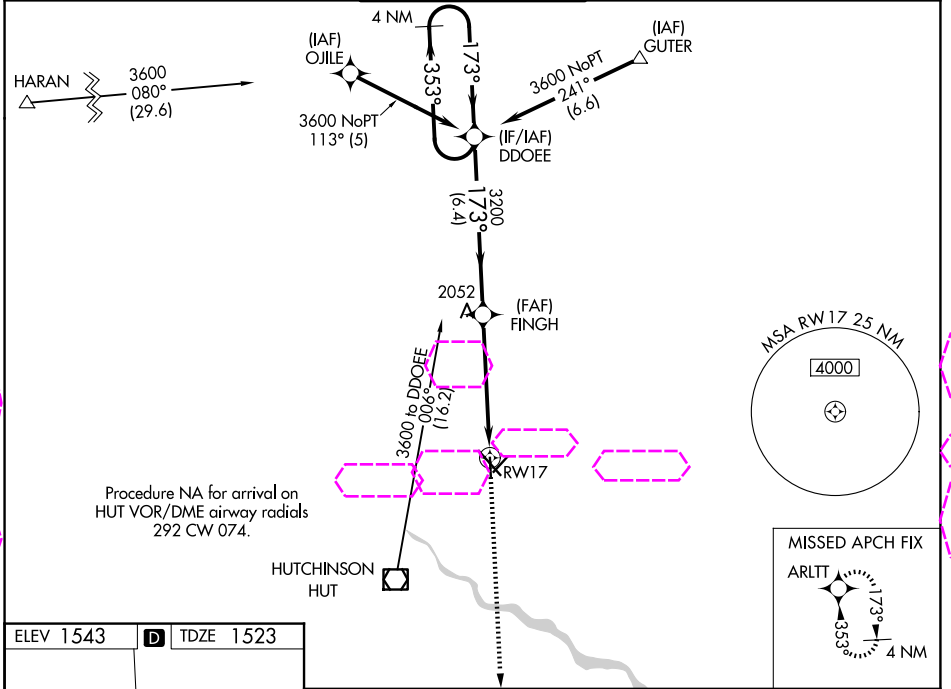
WAAS CH 81941 W17A	APP CRS 173°	Rwy Ldg 4012 TDZE 1523 Apt Elev 1543
--	------------------------	---

RNAV (GPS) RWY 17

HUTCHINSON RGNL (HUT)

7 Circling to Rwy 22 NA at night. For uncompensated Baro-VNAV systems, LNAV/VNAV NA below -18°C (0°F) or above 54°C (130°F). DME/DME RNP-0.3 NA. MISSED APPROACH: Climb to 3600 direct ARLTT and hold.

ATIS 124.25	WICHITA APP CON 125.5 306.2	HUTCHINSON TOWER * 118.5 (CTAF) 363.0	GND CON 121.9	UNICOM 122.95
-----------------------	---------------------------------------	---	-------------------------	-------------------------



CATEGORY	A	B	C	D
LPV DA	1889-1 366 (400-1)			NA
LNAV/VNAV DA	2078-1½ 555 (600-1½)			NA
LNAV MDA	2060-1	537 (600-1)	2060-1½ 537 (600-1½)	NA
CIRCLING	2080-1	537 (600-1)	2200-1¾ 657 (700-1¾)	NA

REIL Rwy 4, 22 and 31
HIRL Rwy 13-31
MIRL Rwy 4-22 and 17-35

HUTCHINSON, KANSAS
Orig 07DEC17

38°04'N-97°52'W

HUTCHINSON RGNL (HUT)

RNAV (GPS) RWY 17

NC-2, 27 NOV 2025 to 25 DEC 2025

NC-2, 27 NOV 2025 to 25 DEC 2025