

HUTCHINSON, KANSAS

AL-200 (FAA)

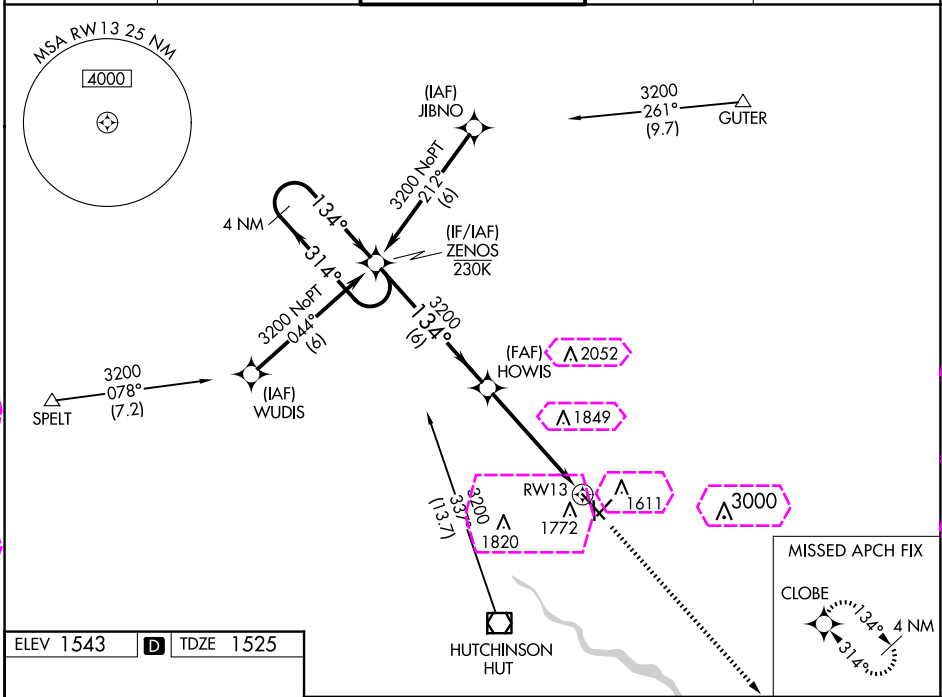
22363

WAAS CH 50210 W13A	APP CRS 134°	Rwy Idg 7003 TDZE 1525 Apt Elev 1543
--------------------------	-----------------	---

RNAV (GPS) RWY 13

HUTCHINSON RGNL (HUT)

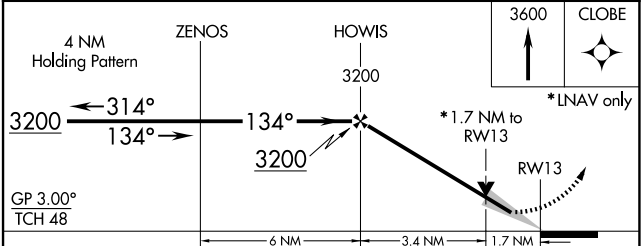
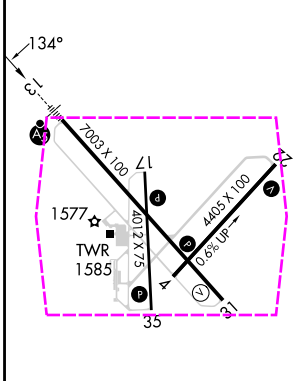
RNP APCH-GPS		MALSR	MISSED APPROACH: Climb to 3600 direct CLOBE and hold.	
<p>⚠ Circling to Rwy 22 NA at night. For uncompensated Baro-VNAV systems, LNAV/VNAV NA below -18°C or above 54°C. # RVR 1800 authorized with use of FD or HUD to DA.</p>				
ATIS 124.25	WICHITA APP CON 125.5 306.2	HUTCHINSON TOWER * 118.5 (CTAF) 363.0	GND CON 121.9	UNICOM 122.95



NC-2 30 OCT 2025 to 27 NOV 2025

NC-2 30 OCT 2025 to 27 NOV 2025

ELEV 1543	D	TDZE 1525
-----------	---	-----------



CATEGORY	A	B	C	D
LPV DA#		1725/24	200 (200-½)	
LNAV/VNAV DA		1932/40	407 (400-¾)	
LNAV MDA	2120/24	595 (600-½)	2120-¼	595 (600-¼)
CIRCLING	2120-1	577 (600-1)	2200-¾ 657 (700-¾)	2720-3 1177 (1200-3)

REIL Rwy 4, 22 and 31
HIRL Rwy 13-31
MIRL Rwy 4-22 and 17-35

HUTCHINSON, KANSAS
Amdt 1A 08SEP22

38°04'N-97°52'W

HUTCHINSON RGNL (HUT) RNAV (GPS) RWY 13

HUTCHINSON, KANSAS

AL-200 (FAA)

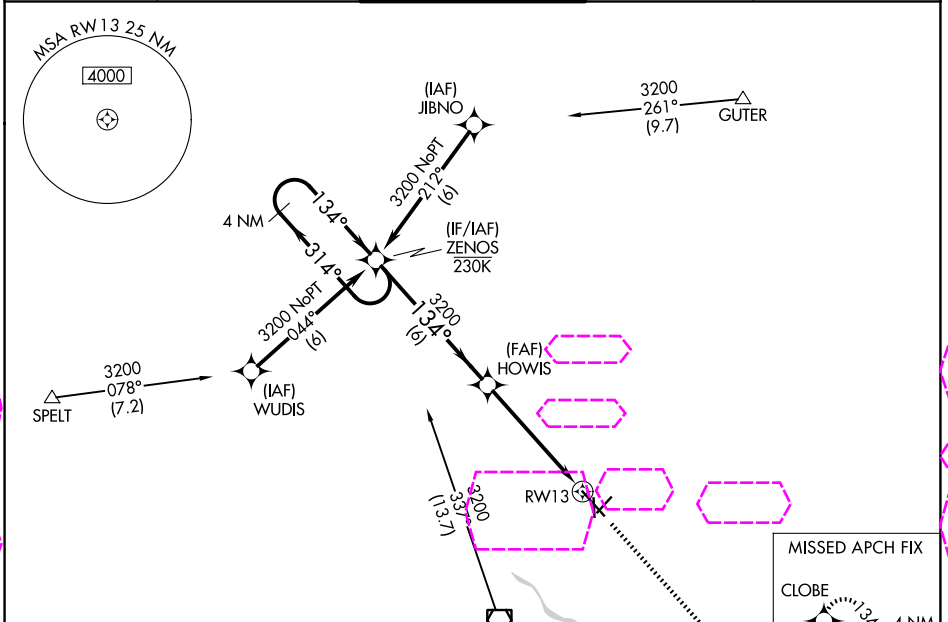
25331

WAAS CH 50210 W13A	APP CRS 134°	Rwy Ldg 7003 TDZE 1525 Apt Elev 1543
--	------------------------	---

RNAV (GPS) RWY 13

HUTCHINSON RGNL (HUT)

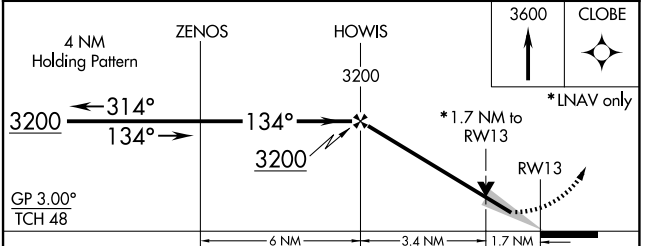
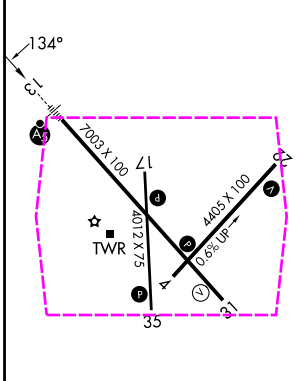
RNP APCH-GPS		MALSR	MISSED APPROACH: Climb to 3600 direct CLOBE and hold.	
<p>⚠ Circling to Rwy 22 NA at night. For uncompensated Baro-VNAV systems, LNAV/VNAV NA below -18°C or above 54°C. # RVR 1800 authorized with use of FD or HUD to DA.</p>				
ATIS 124.25	WICHITA APP CON 125.5 306.2	HUTCHINSON TOWER ★ 118.5 (CTAF) 363.0	GND CON 121.9	UNICOM 122.95



NC-2, 27 NOV 2025 to 25 DEC 2025

NC-2, 27 NOV 2025 to 25 DEC 2025

ELEV 1543	D	TDZE 1525
-----------	----------	-----------



CATEGORY	A	B	C	D
LPV DA#	1725/24 200 (200-½)			
LNAV/VNAV DA	1932/40 407 (400-¾)			
LNAV MDA	2120/24 595 (600-½)		2120-¼ 595 (600-¼)	
CIRCLING	2120-1 577 (600-1)		2200-¾ 2720-3 657 (700-¾) 1177 (1200-3)	

REIL Rwy 4, 22 and 31
HIRL Rwy 13-31
MIRL Rwy 4-22 and 17-35

HUTCHINSON, KANSAS
Amdt 1A 08SEP22

38°04'N-97°52'W

HUTCHINSON RGNL (HUT)
RNAV (GPS) RWY 13