



HUTCHINSON, KANSAS

AL-200 (FAA)

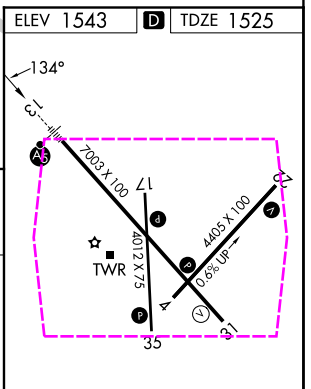
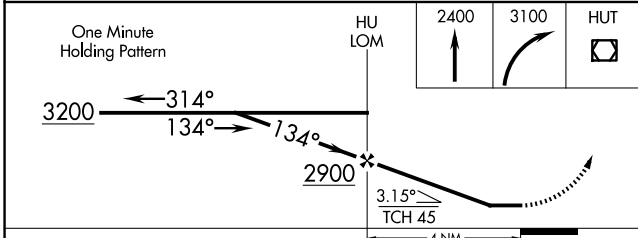
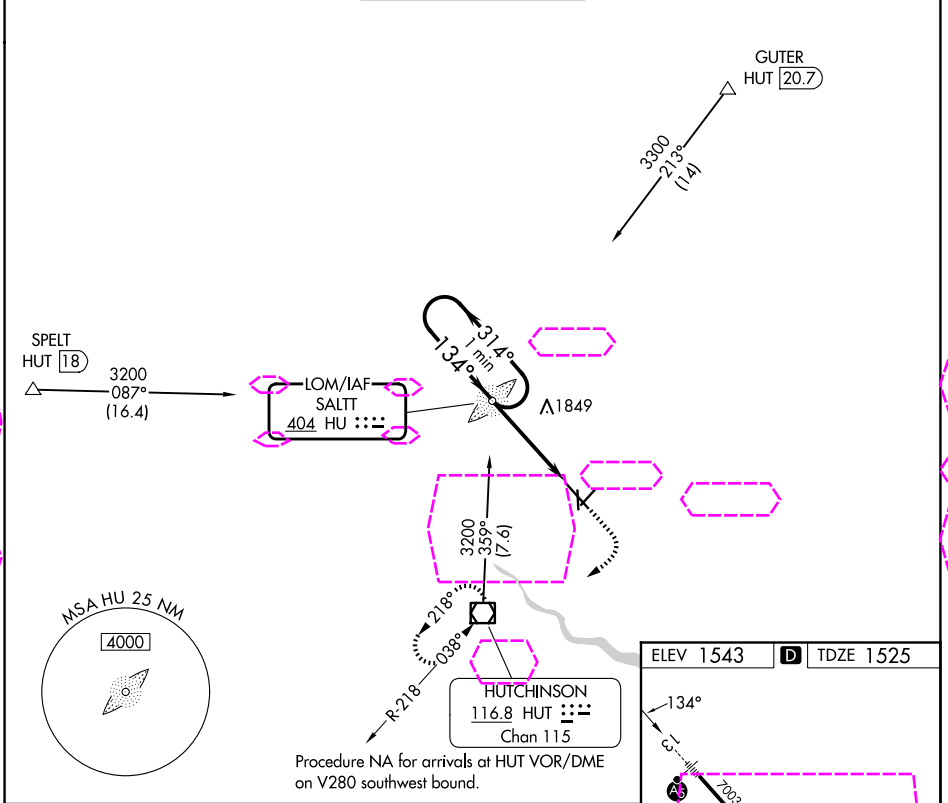
25331

LOM HU <b>404</b>	APP CRS <b>134°</b>	Rwy Ldg <b>7003</b> TDZE <b>1525</b> Apt Elev <b>1543</b>
----------------------	------------------------	---

**NDB RWY 13**  
HUTCHINSON RGNL (HUT)

<p><b>▼</b> Circling to Rwy 22 NA at night. <b>▲</b> For inop ALS, increase S-13 Cat A/B visibility to RVR 5500, and Cat C/D to 1½ SM.</p>	<p>MALSR </p>	<p>MISSED APPROACH: Climb to 2400 then climbing right turn to 3100 direct HUT VOR/DME and hold.</p>
--	-------------------	---

ATIS <b>124.25</b>	WICHITA APP CON <b>125.5 306.2</b>	HUTCHINSON TOWER * <b>118.5 (CTAF) 363.0</b>	GND CON <b>121.9</b>	UNICOM <b>122.95</b>
-----------------------	---------------------------------------	---	-------------------------	-------------------------



CATEGORY	A	B	C	D
	2200/40	675 (700-¾)	2200-1½	675 (700-1½)
S-13	2200-1	657 (700-1)	2200-1⅞	2720-3
CIRCLING	2200-1	657 (700-1)	657 (700-1⅞)	1177 (1200-3)

ELEV 1543	TDZE 1525
REIL Rwy 4, 22 and 31	HIRL Rwy 13-31
MIRL Rwy 4-22 and 17-35	FAF to MAP 4 NM
Knots	60 90 120 150 180
Min:Sec	4:00 2:40 2:00 1:36 1:20

HUTCHINSON, KANSAS  
Amdt 16 07DEC17

38°04'N-97°52'W

HUTCHINSON RGNL (HUT)  
**NDB RWY 13**

NC-2 27 NOV 2025 to 25 DEC 2025

NC-2 27 NOV 2025 to 25 DEC 2025