


LOC I-HUT 110.1	APP CRS 134°	Rwy Idg 7003 TDZE 1525 Apt Elev 1543
---------------------------	------------------------	---

ILS or LOC RWY 13

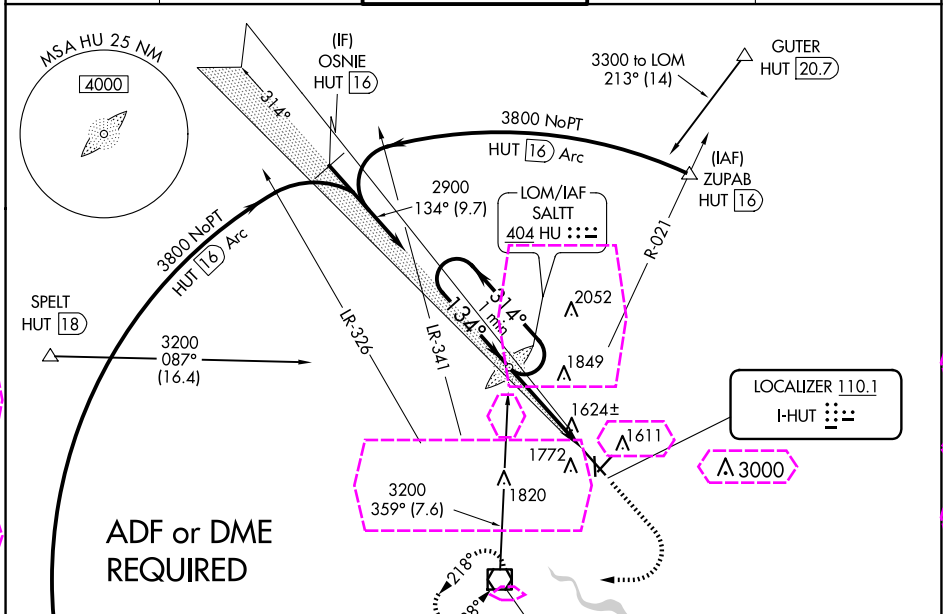
HUTCHINSON RGNL (HUT)

⚠ When VGSi inop, Circling Rwy 22 NA at night.
 For inop ALS, increase S-LOC Rwy 13 Cat C/D visibility to RVR 5500.
 *RVR 1800 authorized with use of FD or AP or HUD to DA.

MALSR 

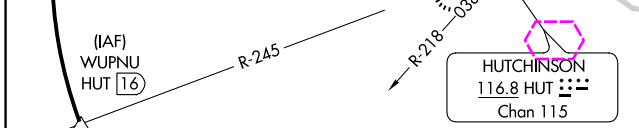
MISSED APPROACH: Climb to 2400 then climbing right turn to 3100 direct HUT VOR/DME and hold.

ATIS 124.25	WICHITA APP CON 125.5 306.2	HUTCHINSON TOWER * 118.5 (CTAF) 363.0	GND CON 121.9	UNICOM 122.95
-----------------------	---------------------------------------	---	-------------------------	-------------------------

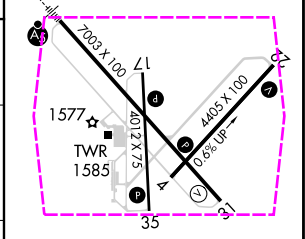


NC-2 30 OCT 2025 to 27 NOV 2025

NC-2 30 OCT 2025 to 27 NOV 2025



ELEV 1543	D TDZE 1525
-----------	--------------------



CATEGORY	A	B	C	D
S-ILS 13*	1725/24 200 (200-½)			
S-LOC 13	1880/24	355 (400-½)	1880/30	355 (400-¾)
CIRCLING	2080-1	537 (600-1)	2200-1¾ 657 (700-1¾)	2720-3 1177 (1200-3)


REIL Rws 4, 22 and 31	HIRL Rwy 13-31	MIRL Rws 4-22 and 17-35			
FAF to MAP 4 NM					
Knots	60	90	120	150	180
Min:Sec	4:00	2:40	2:00	1:36	1:20

LOC I-HUT 110.1	APP CRS 134°	Rwy Ldg 7003	TDZE 1525
		Apt Elev 1543	

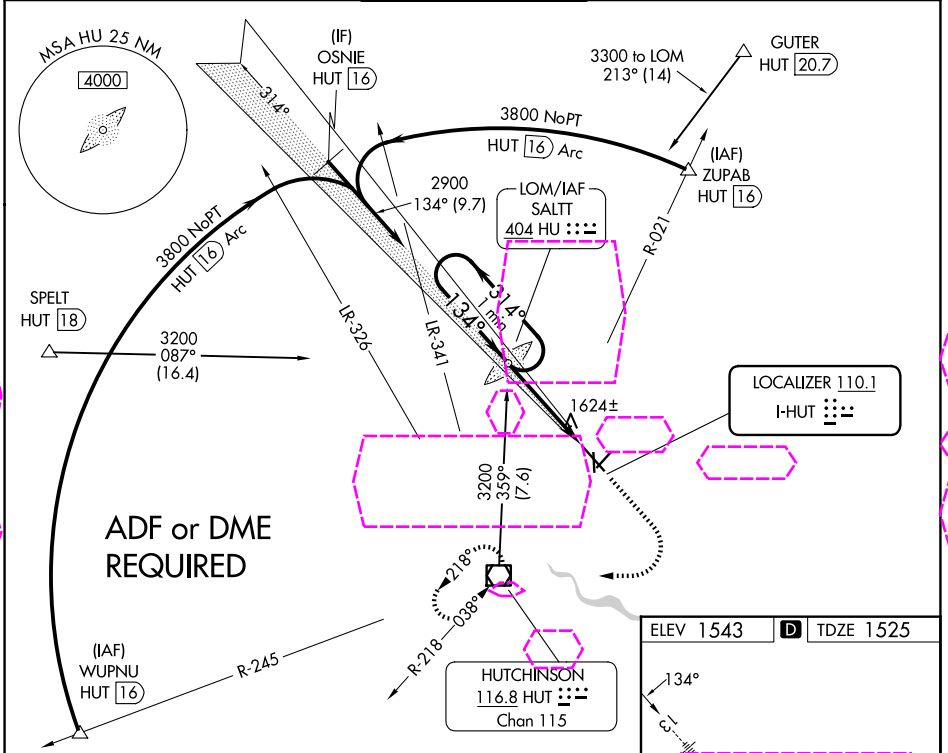
ILS or LOC RWY 13

HUTCHINSON RGNL (HUT)

⚠ When VGSi inop, Circling Rwy 22 NA at night.
 For inop ALS, increase S-LOC Rwy 13 Cat C/D visibility to RVR 5500.
 *RVR 1800 authorized with use of FD or AP or HUD to DA.

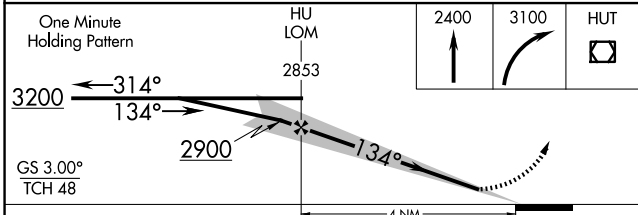
MALSR
 MISSED APPROACH: Climb to 2400 then climbing right turn to 3100 direct HUT VOR/DME and hold.

ATIS 124.25	WICHITA APP CON 125.5 306.2	HUTCHINSON TOWER * 118.5 (CTAF) 363.0	GND CON 121.9	UNICOM 122.95
-----------------------	---------------------------------------	---	-------------------------	-------------------------

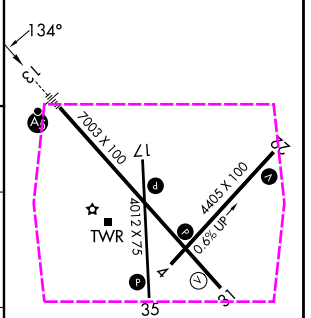


NC-2, 27 NOV 2025 to 25 DEC 2025

NC-2, 27 NOV 2025 to 25 DEC 2025



ELEV 1543	D TDZE 1525
-----------	--------------------



CATEGORY	A	B	C	D
S-ILS 13*	1725/24 200 (200-½)			
S-LOC 13	1880/24	355 (400-½)	1880/30	355 (400-¾)
CIRCLING	2080-1	537 (600-1)	2200-1¾ 657 (700-1¾)	2720-3 1177 (1200-3)

REIL Rws 4, 22 and 31
 HIRL Rwy 13-31
 MIRL Rws 4-22 and 17-35
 FAF to MAP 4 NM

Knots	60	90	120	150	180
Min:Sec	4:00	2:40	2:00	1:36	1:20