

HOULTON, MAINE

AL-196 (FAA)

25051

WAAS CH <b>66046</b> <b>W23A</b>	APP CRS <b>229°</b>	Rwy Idg TDZE Apt Elev	<b>5015</b> <b>489</b> <b>489</b>
--	------------------------	-----------------------------	---

# RNAV (GPS) RWY 23

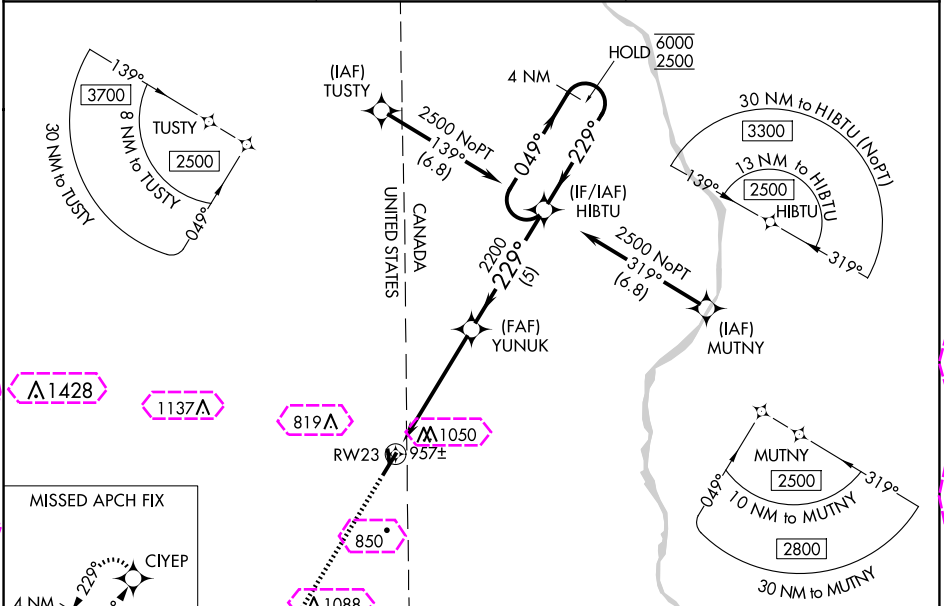
HOULTON INTL (HUL)

RNP APCH - GPS

**⚠** For uncompensated Baro-VNAV systems, LNAV/VNAV NA below -20°C or above 54°C. Rwy 23 helicopter visibility reduction below 3/4 SM NA. Circling Rwy 1, 19 NA at night. Circling NA for Cat C east of Rwy 5-23. Baro-VNAV and VDP NA when using PQI altimeter setting. When local altimeter setting not received, use PQI altimeter setting and increase LPV DA to 882 feet and all visibilities 1/2 SM. Increase LNAV/VNAV DA to 1387 feet and all visibilities 1/2 SM. Increase all MDAs 100 feet and LNAV visibility Cat B/C 1/2 SM, and Circling visibility Cat B/C 1/4 SM.

**MISSED APPROACH:**  
Climb to 3000 direct CIYEP and hold.

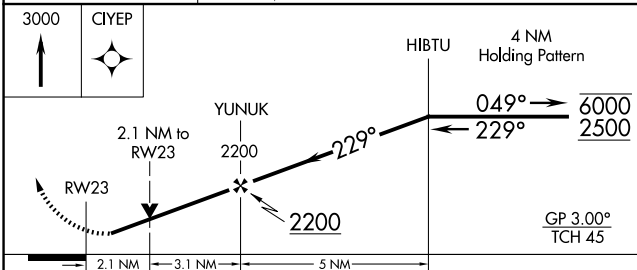
ASOS <b>132.025</b>	BOSTON CENTER <b>120.25 346.4</b>	UNICOM <b>122.8 (CTAF) 0</b>
------------------------	--------------------------------------	---------------------------------



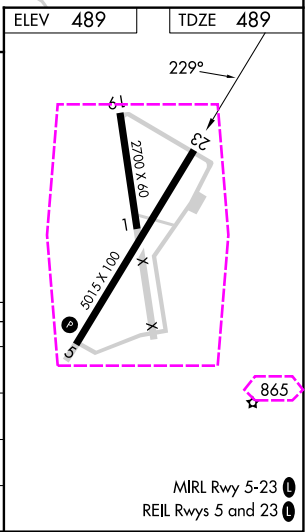
NE-1, 30 OCT 2025 to 27 NOV 2025

NE-1, 30 OCT 2025 to 27 NOV 2025

ELEV <b>489</b>	TDZE <b>489</b>
-----------------	-----------------



CATEGORY	A	B	C	D
LPV DA	796-1	307 (400-1)		NA
LNAV/VNAV DA	1301-2½	812 (900-2½)		NA
LNAV MDA	1220-1	731 (800-1)	1220-2 731 (800-2)	NA
CIRCLING	1320-1¼ 831 (900-1¼)	1400-1¼ 911 (1000-1¼)	1400-2¾ 911 (1000-2¾)	NA



HOULTON, MAINE  
Orig-A 20FEB25

46°07'N-67°48'W

# RNAV (GPS) RWY 23

MIRL Rwy 5-23 0  
REIL Rws 5 and 23 0

HOULTON, MAINE

AL-196 (FAA)

25331

WAAS CH <b>66046</b> <b>W23A</b>	APP CRS <b>229°</b>	Rwy Ldg <b>5015</b> TDZE <b>489</b> Apt Elev <b>489</b>
--	------------------------	---

# RNAV (GPS) RWY 23

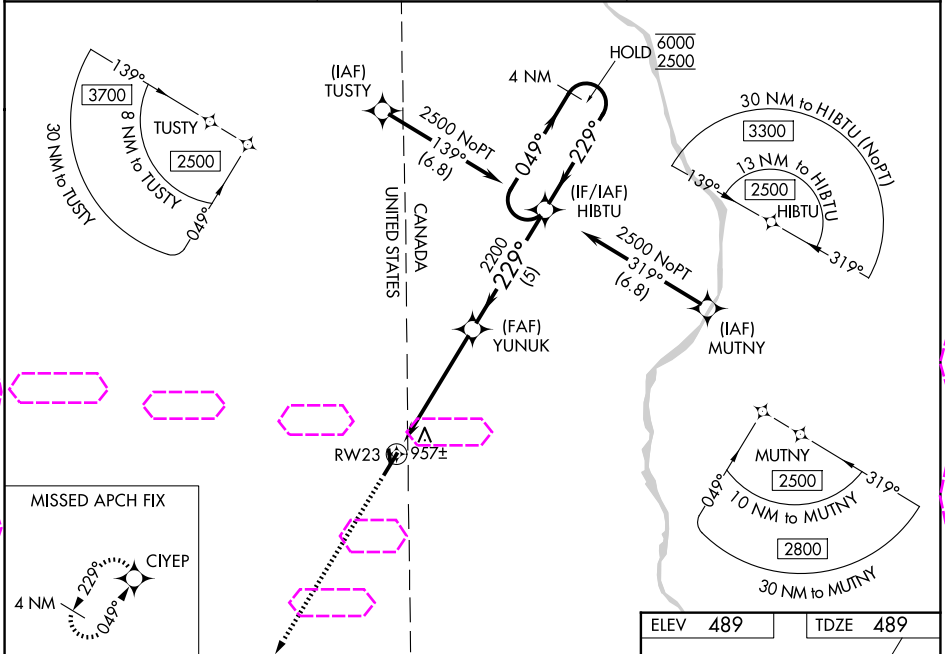
HOULTON INTL (HUL)

RNP APCH - GPS

**⚠** For uncompensated Baro-VNAV systems, LNAV/VNAV NA below -20°C or above 54°C. Rwy 23 helicopter visibility reduction below 3/4 SM NA. Circling Rwy 1, 19 NA at night. Circling NA for Cat C east of Rwy 5-23. Baro-VNAV and VDP NA when using PQI altimeter setting. When local altimeter setting not received, use PQI altimeter setting and increase LPV DA to 882 feet and all visibilities 1/2 SM. Increase LNAV/VNAV DA to 1387 feet and all visibilities 1 1/2 SM. Increase all MDAs 100 feet and LNAV visibility Cat B/C 1/2 SM, and Circling visibility Cat B/C 1/4 SM.

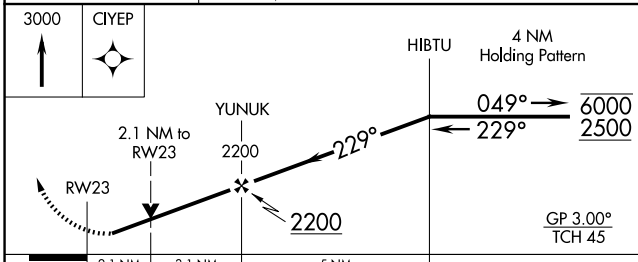
**MISSED APPROACH:**  
Climb to 3000 direct CIYEP and hold.

ASOS <b>132.025</b>	BOSTON CENTER <b>120.25 346.4</b>	UNICOM <b>122.8 (CTAF)</b>
------------------------	--------------------------------------	-------------------------------

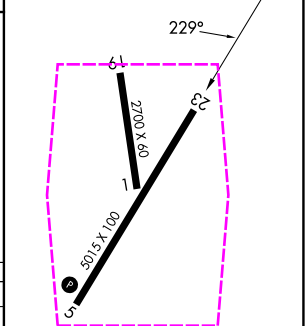


NE-1, 27 NOV 2025 to 25 DEC 2025

NE-1, 27 NOV 2025 to 25 DEC 2025



ELEV <b>489</b>	TDZE <b>489</b>
-----------------	-----------------



CATEGORY	A	B	C	D
LPV DA	796-1	307 (400-1)		NA
LNAV/VNAV DA	1301-2 1/2	812 (900-2 1/2)		NA
LNAV MDA	1220-1	731 (800-1)	1220-2 731 (800-2)	NA
CIRCLING	1320-1 1/4 831 (900-1 1/4)	1400-1 1/4 911 (1000-1 1/4)	1400-2 3/4 911 (1000-2 3/4)	NA

MIRL Rwy 5-23  
REIL Rws 5 and 23

HOULTON, MAINE  
Orig-A 20FEB25

46°07'N-67°48'W

# RNAV (GPS) RWY 23

HOULTON INTL (HUL)