

GREAT BEND, KANSAS

AL-175 (FAA)

21336

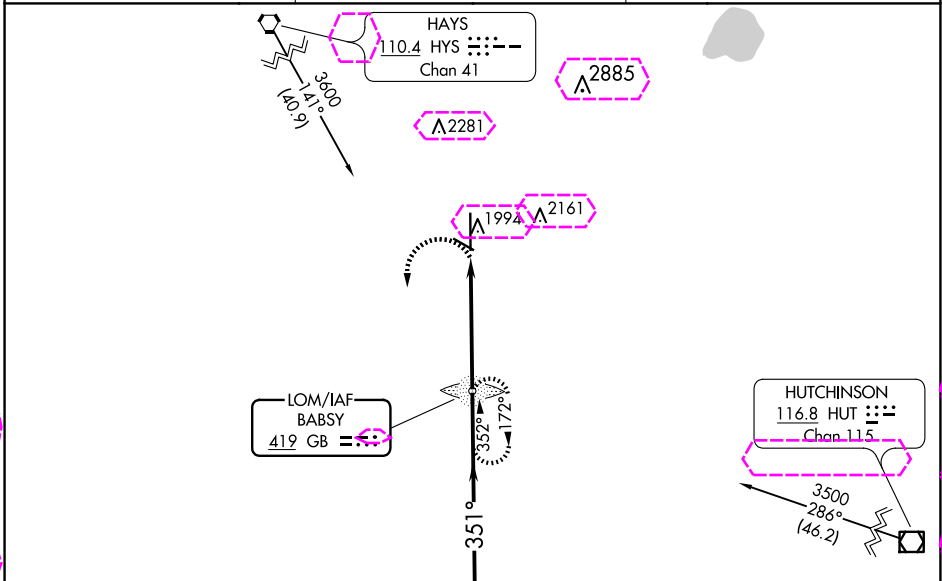
LOM GB 419	APP CRS 351°	Rwy Idg 7852 TDZE 1883 Apt Elev 1887
----------------------	------------------------	---

NDB RWY 35

GREAT BEND MUNI (GBD)

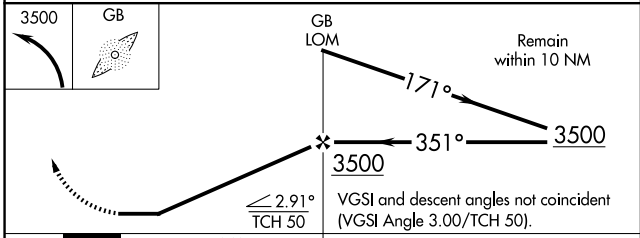
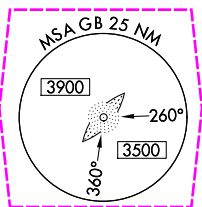
NA	MALS 	MISSED APPROACH: Climbing left turn to 3500 direct BABS Y LOM and hold.
----	----------	--

AWOS-3PT 119.275	KANSAS CITY CENTER 118.8 322.425	UNICOM 122.8 (CTAF)
----------------------------	--	-------------------------------



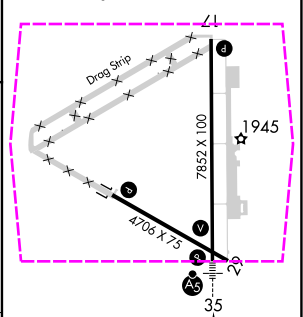
NC-2, 30 OCT 2025 to 27 NOV 2025

NC-2, 30 OCT 2025 to 27 NOV 2025



ELEV 1887		TDZE 1883
-----------	--	-----------

MIRL Rwy 11-29 and 17-35
REIL Rwy 17



CATEGORY	A	B	C	D
S-35	2340-3/4 457 (500-3/4)			2340-1/4 457 (500-1/4)
CIRCLING	2340-1	453 (500-1)	2520-1/4 633 (700-1/4)	2640-2/2 753 (800-2/2)

FAF to MAP 5.1 NM					
Knots	60	90	120	150	180
Min:Sec	5:06	3:24	2:33	2:02	1:42

GREAT BEND, KANSAS
Amdt 3B 02DEC21

38°21'N-98°52'W

GREAT BEND MUNI (GBD)
NDB RWY 35

GREAT BEND, KANSAS

AL-175 (FAA)

25331

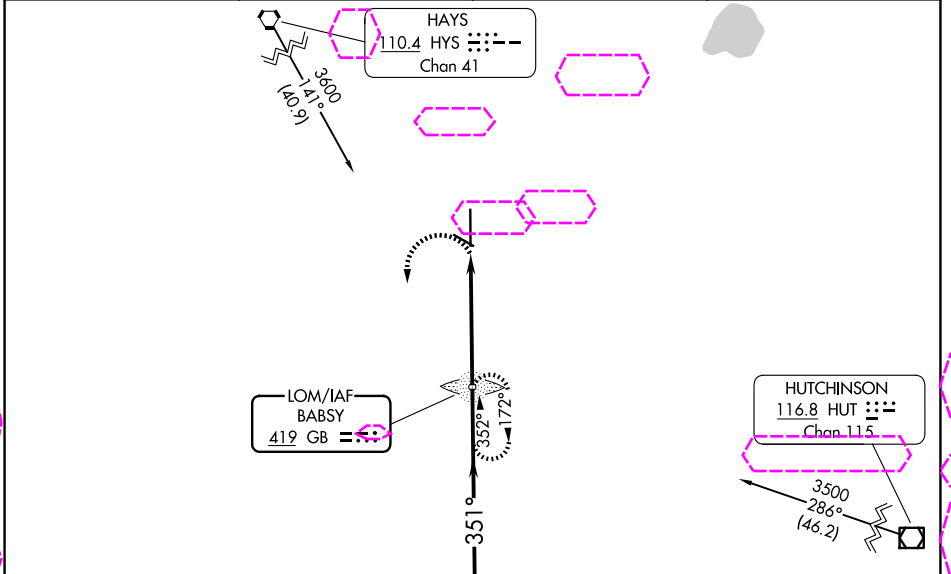
LOM GB 419	APP CRS 351°	Rwy Ldg 7852 TDZE 1883 Apt Elev 1887
----------------------	------------------------	--

NDB RWY 35

GREAT BEND MUNI (GBD)

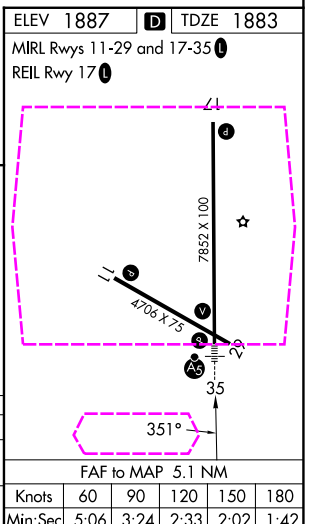
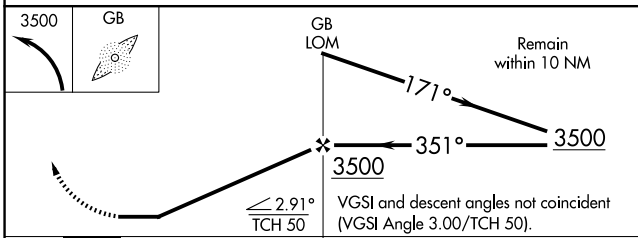
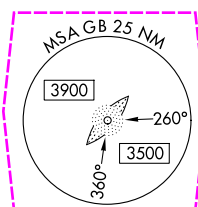
NA	MALSR	MISSED APPROACH: Climbing left turn to 3500 direct BABS Y LOM and hold.
----	-------	--

AWOS-3PT 119.275	KANSAS CITY CENTER 118.8 322.425	UNICOM 122.8 (CTAF)
----------------------------	--	-------------------------------



NC-2, 27 NOV 2025 to 25 DEC 2025

NC-2, 27 NOV 2025 to 25 DEC 2025



CATEGORY	A	B	C	D
S-35	2340-3/4 457 (500-3/4)			2340-1/4 457 (500-1/4)
CIRCLING	2340-1 453 (500-1)		2520-1/4 633 (700-1/4)	2640-2/2 753 (800-2/2)

ELEV 1887	TDZE 1883
MIRL Rwy 11-29 and 17-35	
REIL Rwy 17	
FAF to MAP 5.1 NM	
Knots	60 90 120 150 180
Min:Sec	5:06 3:24 2:33 2:02 1:42

GREAT BEND, KANSAS
Amdt 3B 02DEC21

38°21'N-98°52'W

GREAT BEND MUNI (GBD)
NDB RWY 35