

GREAT BEND, KANSAS

AL-175 (FAA)

23166

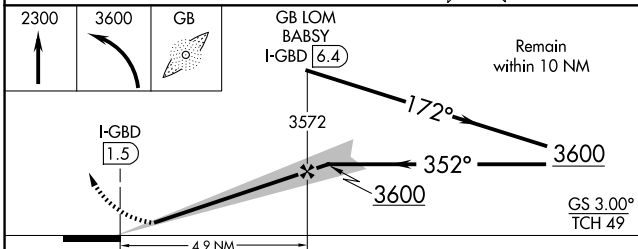
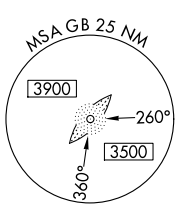
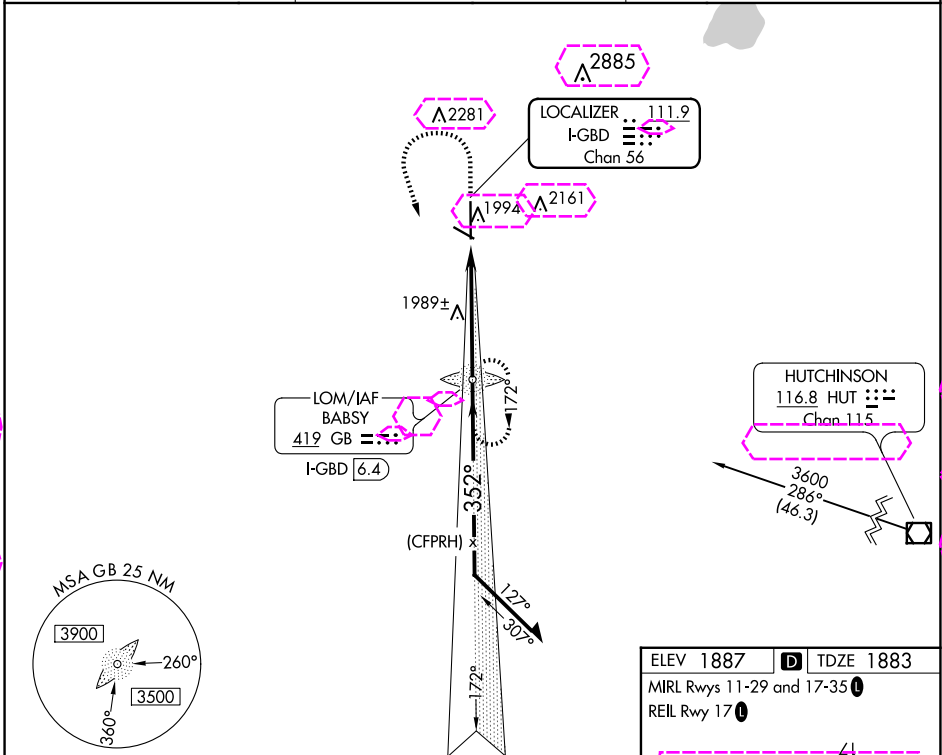
LOC/DME I-GBD <b>111.9</b> Chan <b>56</b>	APP CRS <b>352°</b>	Rwy Idg <b>7852</b> TDZE <b>1883</b> Apt Elev <b>1887</b>
---	------------------------	---

# ILS or LOC RWY 35

GREAT BEND MUNI (GBD)

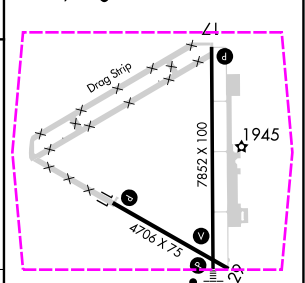
ADF required. ▼ ▲ NA	MALSR 	MISSED APPROACH: Climb to 2300 then climbing left turn to 3600 direct BABSY LOM and hold.
----------------------------	-----------	---

AWOS-3PT <b>119.275</b>	KANSAS CITY CENTER <b>118.8 322.425</b>	UNICOM <b>122.8 (CTAF) ①</b>
----------------------------	--	---------------------------------



ELEV 1887	TDZE 1883
-----------	-----------

MIRL Rwy 11-29 and 17-35  
REIL Rwy 17



CATEGORY	A	B	C	D
S-ILS 35	2083-½		200 (200-½)	
S-LOC 35	2260-½	377 (400-½)	2260-⅝	377 (400-⅝)
CIRCLING	2320-1 433 (500-1)	2340-1 453 (500-1)	2520-1¾ 633 (700-1¾)	2640-2½ 753 (800-2½)

FAF to MAP 4.9 NM					
Knots	60	90	120	150	180
Min:Sec	4:54	3:16	2:27	1:58	1:38

GREAT BEND, KANSAS  
Orig-E 15JUN23

38°21'N-98°52'W

# GREAT BEND MUNI (GBD) ILS or LOC RWY 35

NC-2 30 OCT 2025 to 27 NOV 2025

NC-2 30 OCT 2025 to 27 NOV 2025

GREAT BEND, KANSAS

AL-175 (FAA)

25331

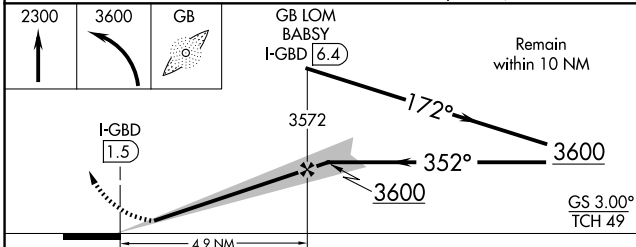
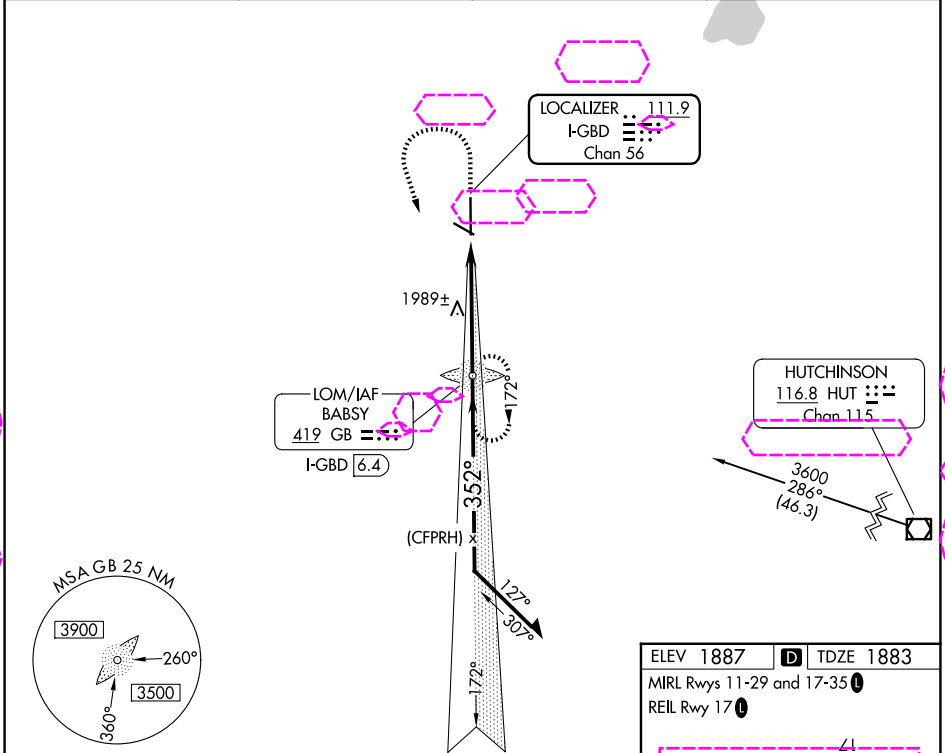
LOC/DME I-GBD <b>111.9</b> Chan <b>56</b>	APP CRS <b>352°</b>	Rwy Ldg <b>7852</b> TDZE <b>1883</b> Apt Elev <b>1887</b>
---	------------------------	---

# ILS or LOC RWY 35

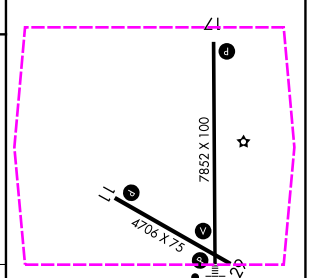
GREAT BEND MUNI (GBD)

ADF required.	MALSR 	MISSED APPROACH: Climb to 2300 then climbing left turn to 3600 direct BABSY LOM and hold.
---------------	-----------	---

AWOS-3PT <b>119.275</b>	KANSAS CITY CENTER <b>118.8 322.425</b>	UNICOM <b>122.8 (CTAF)</b>
----------------------------	--	-------------------------------



ELEV 1887	TDZE 1883
MIRL Rwy 11-29 and 17-35	
REIL Rwy 17	



CATEGORY	A	B	C	D
S-ILS 35	2083-1/2		200 (200-1/2)	
S-LOC 35	2260-1/2	377 (400-1/2)	2260-5/8	377 (400-5/8)
CIRCLING	2320-1 433 (500-1)	2340-1 453 (500-1)	2520-1 3/4 633 (700-1 3/4)	2640-2 1/2 753 (800-2 1/2)

FAF to MAP 4.9 NM					
Knots	60	90	120	150	180
Min:Sec	4:54	3:16	2:27	1:58	1:38

GREAT BEND, KANSAS  
Orig-E 15JUN23

38°21'N-98°52'W

# GREAT BEND MUNI (GBD) ILS or LOC RWY 35

NC-2, 27 NOV 2025 to 25 DEC 2025

NC-2, 27 NOV 2025 to 25 DEC 2025