

(ERNNY.ERNNY8) 25331

AL-166 (FAA)

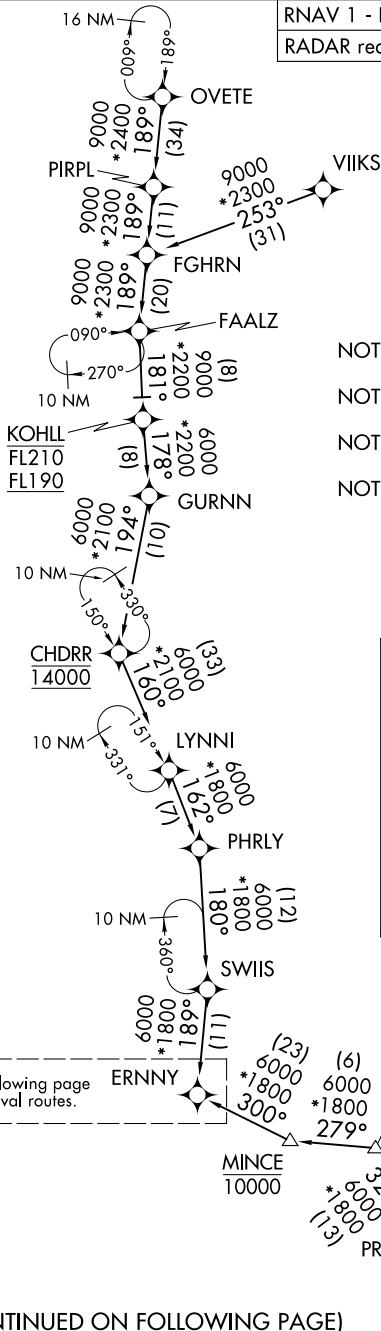
CHICAGO O'HARE INTL (ORD)

ERNNY EIGHT ARRIVAL (RNAV) Transition Routes

CHICAGO, ILLINOIS

RNAV 1 - DME/DME/IRU or GPS.
RADAR required.

CHICAGO APP CON
119.0 292.125
D-ATIS
135.4 282.225



- NOTE: YOLUR Transition - do not file - to be assigned by ATC.
- NOTE: STASH Transition - do not file - to be assigned by ATC.
- NOTE: LYNNI Transition: For Milwaukee terminal area departures only.
- NOTE: VIKS Transition - do not file - to be assigned by ATC.

- CHDRR TRANSITION (CHDRR.ERNNY8)
- FAALZ TRANSITION (FAALZ.ERNNY8)
- FGHRN TRANSITION (FGHRN.ERNNY8)
- KOHLL TRANSITION (KOHLL.ERNNY8)
- LYNNI TRANSITION (LYNNI.ERNNY8)
- OVETE TRANSITION (OVETE.ERNNY8)
- PIRPL TRANSITION (PIRPL.ERNNY8)
- STASH TRANSITION (STASH.ERNNY8)
- VIKS TRANSITION (VIKS.ERNNY8)
- YOLUR TRANSITION (YOLUR.ERNNY8)

See following page for arrival routes.

YOLUR

(CONTINUED ON FOLLOWING PAGE)

NOTE: Chart not to scale.

ERNNY EIGHT ARRIVAL (RNAV) Transition Routes

CHICAGO, ILLINOIS

(ERNNY.ERNNY8) 20APR23

CHICAGO O'HARE INTL (ORD)

EC-3 27 NOV 2025 to 25 DEC 2025

EC-3 27 NOV 2025 to 25 DEC 2025