

EVERETT, WASHINGTON

AL-142 (FAA)

25219

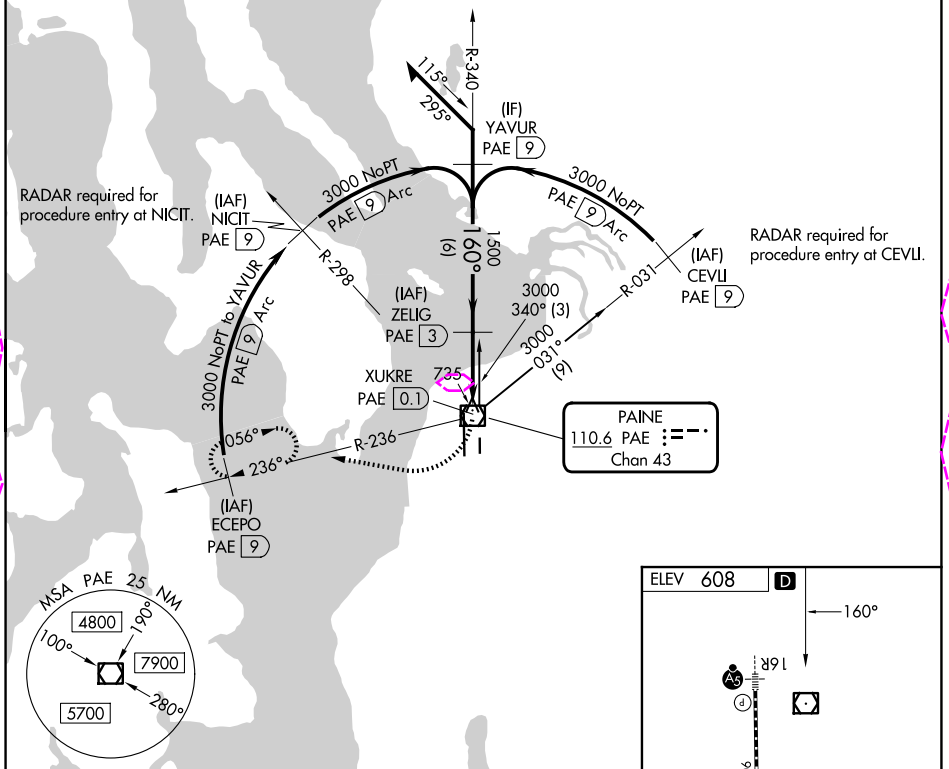
VOR/DME PAE 110.6 Chan 43	APP CRS 160°	Rwy Ldg TDZE Apt Elev 608	N/A N/A 608
---	------------------------	--	--

VOR-A

SEATTLE PAINE FLD INTL (PAE)

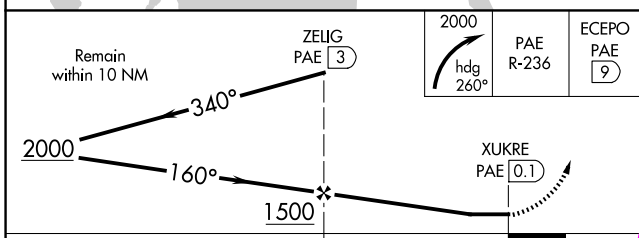
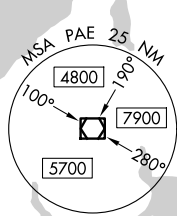
<p>⚠ Circling Rwy 34R NA at night. DME required.</p>		<p>MISSED APPROACH: Climbing right turn to 2000 on heading 260° and PAE VOR/DME R-236 to ECEPO/PAE 9 DME and hold.</p>			
ATIS 128.65	SEATTLE APP CON 128.5 306.9	PAINE TOWER ★ 132.95 (CTAF) 0 256.7	GND CON 121.8 339.8	CLNC DEL 127.175	UNICOM 122.95

DME REQUIRED

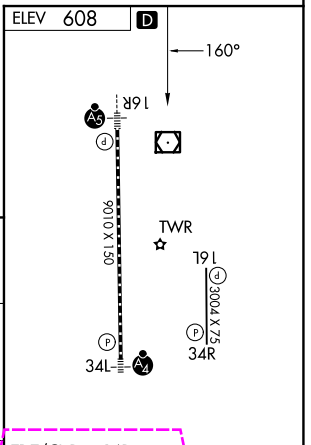


NW-1, 30 OCT 2025 to 27 NOV 2025

NW-1, 30 OCT 2025 to 27 NOV 2025



CATEGORY	A	B	C	D
CIRCLING	1100-1	492 (500-1)	1120-1½ 512 (600-1½)	1160-2 552 (600-2)



TDZ/CL Rwy 16R
HIRL Rwy 16R-34L
REIL Rws 16L and 34R
MIRL Rwy 16L-34R

EVERETT, WASHINGTON
Orig 07DEC17

47°54'N-122°17'W

SEATTLE PAINE FLD INTL (PAE)
VOR-A

EVERETT, WASHINGTON

AL-142 (FAA)

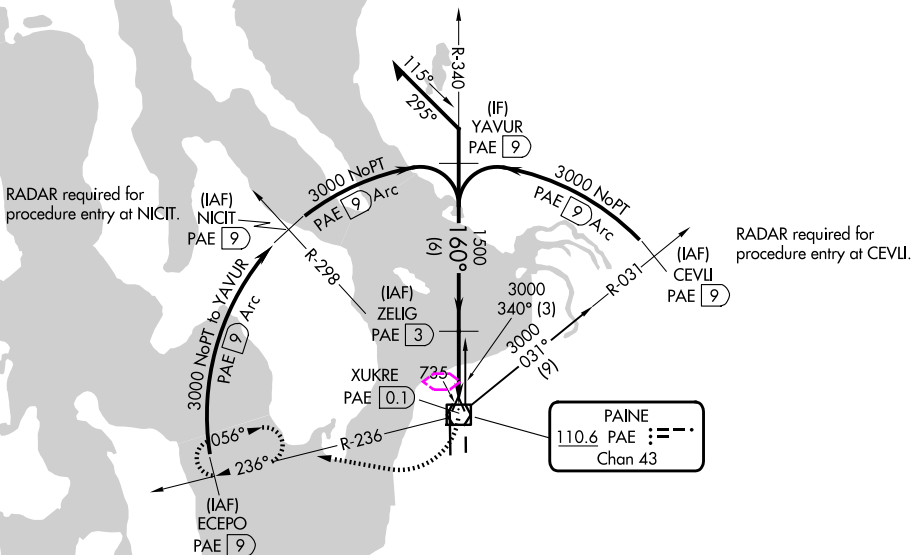
25331

VOR/DME PAE 110.6 Chan 43	APP CRS 160°	Rwy Ldg TDZE Apt Elev 608	N/A N/A 608
---	------------------------	--	--

VOR-A
SEATTLE PAINE FLD INTL (PAE)

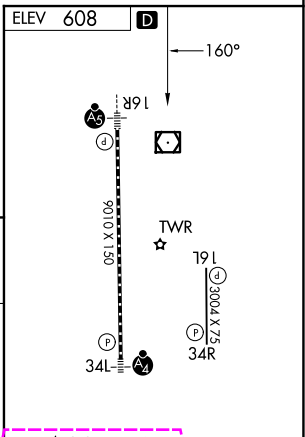
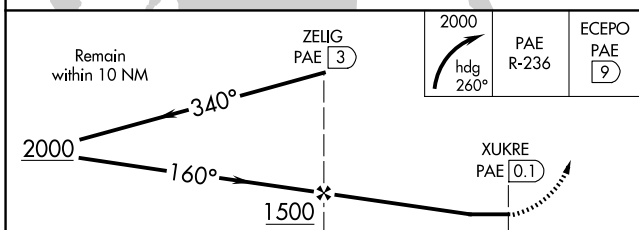
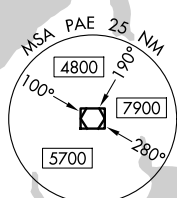
<p>⚠ Circling Rwy 34R NA at night. DME required.</p>		<p>MISSED APPROACH: Climbing right turn to 2000 on heading 260° and PAE VOR/DME R-236 to ECEPO/PAE 9 DME and hold.</p>		
ATIS 128.65	SEATTLE APP CON 128.5 306.9	PAINE TOWER* 132.95 (CTAF) 0 256.7	GND CON 121.8 339.8	UNICOM 122.95

DME REQUIRED



NW-1, 27 NOV 2025 to 25 DEC 2025

NW-1, 27 NOV 2025 to 25 DEC 2025



CATEGORY	A	B	C	D
CIRCLING	1100-1	492 (500-1)	1120-1½ 512 (600-1½)	1160-2 552 (600-2)

TDZL/RCLS Rwy 16R
HIRL Rwy 16R-34L
REIL Rws 16L and 34R
MIRL Rwy 16L-34R

EVERETT, WASHINGTON
Orig 07DEC17

47°54'N-122°17'W

SEATTLE PAINE FLD INTL (PAE)
VOR-A