

EVERETT, WASHINGTON

AL-142 (FAA)

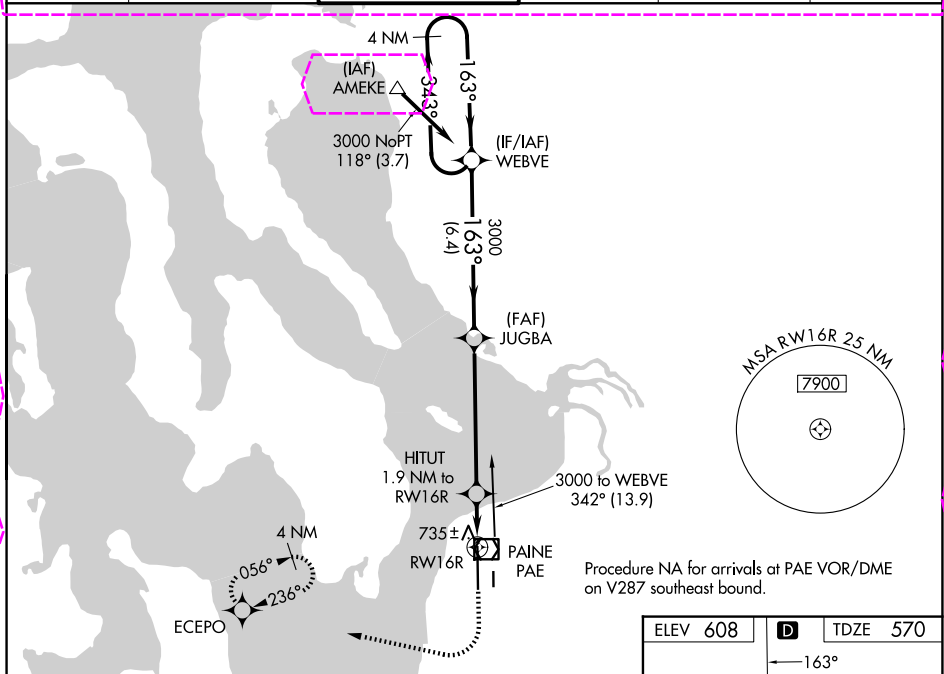
25219

WAAS CH 61129 W16A	APP CRS 163°	Rwy Ldg TDZE Apt Elev	9010 570 608
--	------------------------	-----------------------------	---

RNAV (GPS) Z RWY 16R

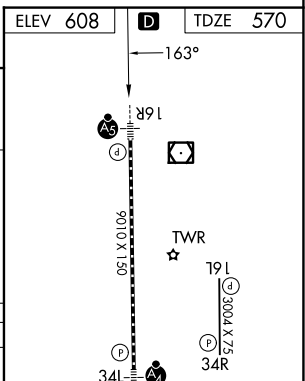
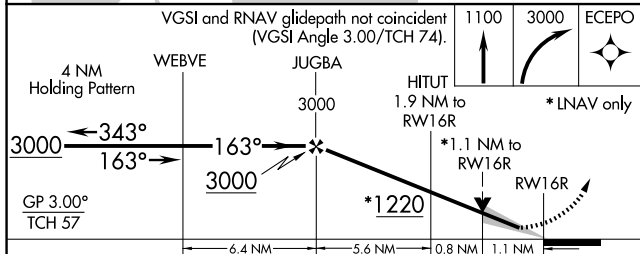
SEATTLE PAINE FLD INTL (P.A.E)

<p>For uncompensated Baro-VNAV systems, LNAV/VNAV NA below -5°C (23°F) or above 54°C (130°F). Circling Rwy 34R NA at night. DME/DME RNP-0.3 NA.</p>		<p>MALSRL</p>	<p>MISSED APPROACH: (Do not exceed 240K until ECEPO) Climb to 1100 then climbing right turn to 3000 direct ECEPO and hold, continue climb-in-hold to 3000.</p>		
ATIS 128.65	SEATTLE APP CON 128.5 306.9	PAINE TOWER * 132.95 (CTAF) 0 256.7	GND CON 121.8 339.8	CLNC DEL 127.175	UNICOM 122.95



NW-1, 30 OCT 2025 to 27 NOV 2025

NW-1, 30 OCT 2025 to 27 NOV 2025



CATEGORY	A	B	C	D
LPV DA		770/18	200 (200-½)	
LNAV/VNAV DA		913/30	343 (400-⅝)	
LNAV MDA	1000/24	430 (400-½)	1000/40	430 (400-¾)
CIRCLING	1100-1	492 (500-1)	1120-1½ 512 (600-1½)	1160-2 552 (600-2)

TDZ/CL Rwy 16R
 HIRL Rwy 16R-34L
 REIL Rwy 16L and 34R
 MIRL Rwy 16L-34R

EVERETT, WASHINGTON
Amdt 1 07DEC17

47°54'N-122°17'W

SEATTLE PAINE FLD INTL (P.A.E)

RNAV (GPS) Z RWY 16R

EVERETT, WASHINGTON

AL-142 (FAA)

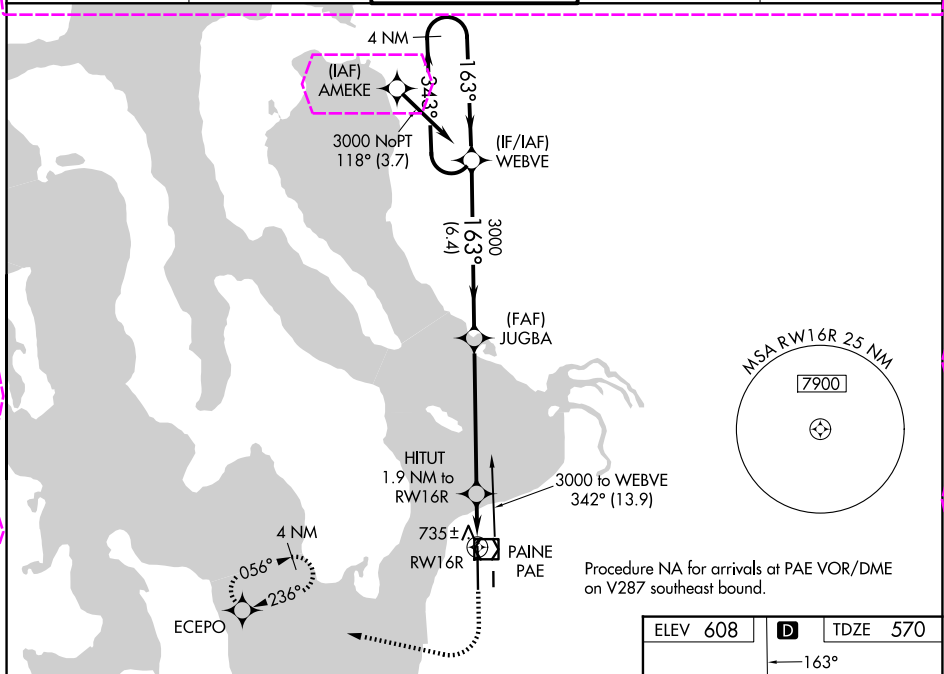
25331

WAAS CH 61129 W16A	APP CRS 163°	Rwy Ldg TDZE Apt Elev	9010 570 608
--	------------------------	-----------------------------	---

RNAV (GPS) Z RWY 16R

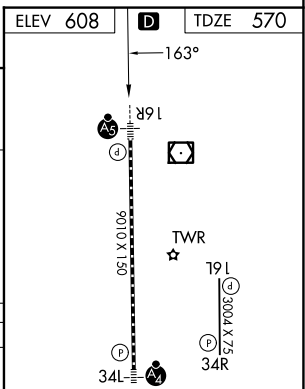
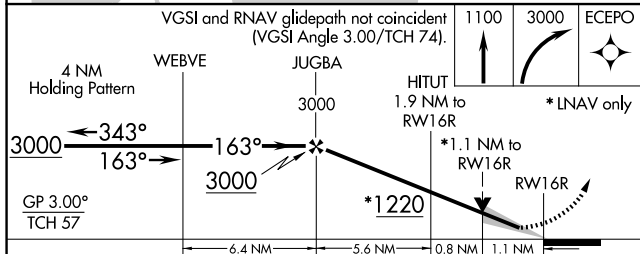
SEATTLE PAINE FLD INTL (P.A.E)

<p>For uncompensated Baro-VNAV systems, LNAV/VNAV NA below -5°C (23°F) or above 54°C (130°F). Circling Rwy 34R NA at night. DME/DME RNP-0.3 NA.</p>		<p>MALSRL</p>	<p>MISSED APPROACH: (Do not exceed 240K until ECEPO) Climb to 1100 then climbing right turn to 3000 direct ECEPO and hold, continue climb-in-hold to 3000.</p>	
ATIS 128.65	SEATTLE APP CON 128.5 306.9	PAINE TOWER* 132.95 (CTAF) 256.7	GND CON 121.8 339.8	UNICOM 122.95



NW-1, 127 NOV 2025 to 25 DEC 2025

NW-1, 127 NOV 2025 to 25 DEC 2025



CATEGORY	A	B	C	D
LPV DA		770/18	200 (200-½)	
LNAV/VNAV DA		913/30	343 (400-⅝)	
LNAV MDA	1000/24	430 (400-½)	1000/40	430 (400-¾)
CIRCLING	1100-1	492 (500-1)	1120-1½ 512 (600-1½)	1160-2 552 (600-2)

TDZL/RCLS Rwy 16R
HIRL Rwy 16R-34L **1**
REIL Rws 16L and 34R
MIRL Rwy 16L-34R

EVERETT, WASHINGTON
Amdt 1 07DEC17

47°54'N-122°17'W

SEATTLE PAINE FLD INTL (P.A.E)

RNAV (GPS) Z RWY 16R