

EVERETT, WASHINGTON

AL-142 (FAA)


25219

WAAS CH 60911 W16B	APP CRS 163°	Rwy Ldg TDZE Apt Elev	9010 570 608
--	------------------------	-----------------------------	---

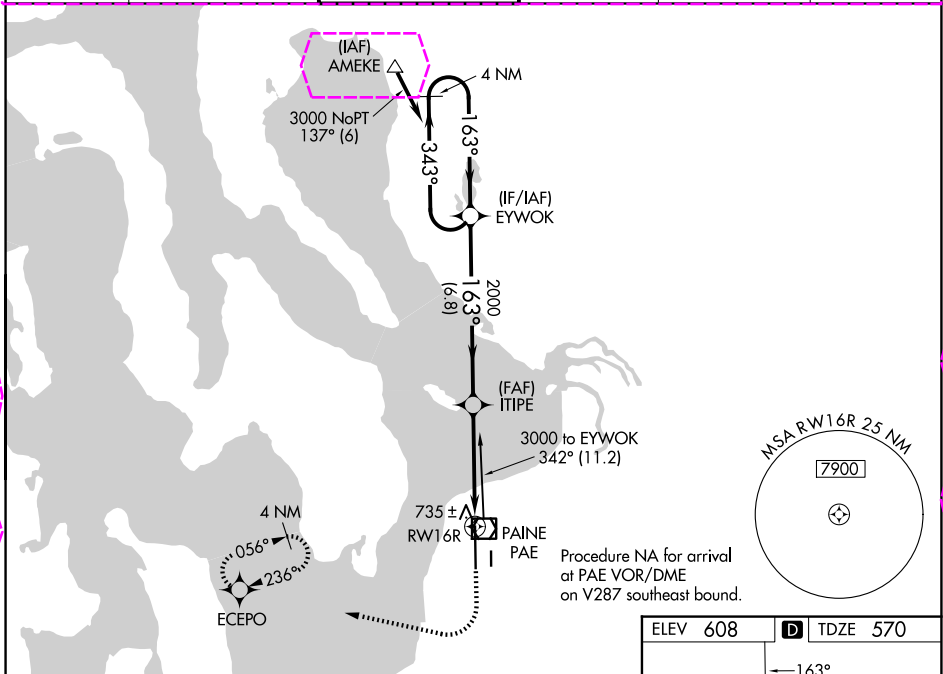
RNAV (GPS) Y RWY 16R

SEATTLE PAINE FLD INTL (P.A.E.)

▼ For uncompensated Baro-VNAV systems, LNAV/VNAV NA below -5°C (23°F) or above 54°C (130°F). Circling Rwy 34R NA at night. DME/DME RNP-0.3 NA. For inop ALS, increase LNAV/VNAV Cats A/B visibility to RVR 5000.

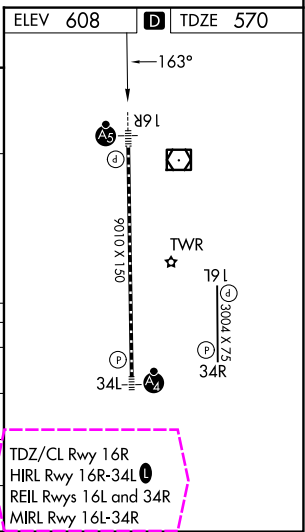
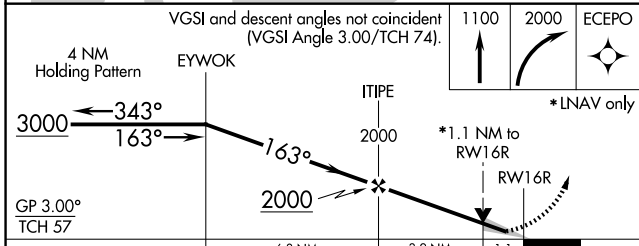
MALSR  MISSED APPROACH: Climb to 1100 then climbing right turn to 2000 direct ECEPO and hold.

ATIS 128.65	SEATTLE APP CON 128.5 306.9	PAINE TOWER * 132.95 (CTAF) 0 256.7	GND CON 121.8 339.8	CLNC DEL 127.175	UNICOM 122.95
-----------------------	---------------------------------------	---	-------------------------------	----------------------------	-------------------------



NW-1, 30 OCT 2025 to 27 NOV 2025

NW-1, 30 OCT 2025 to 27 NOV 2025



EVERETT, WASHINGTON
Amdt 2 07DEC17

47°54'N-122°17'W

RNAV (GPS) Y RWY 16R

EVERETT, WASHINGTON

AL-142 (FAA)

25331

WAAS CH 60911 W16B	APP CRS 163°	Rwy Ldg TDZE Apt Elev	9010 570 608
--	------------------------	-----------------------------	---

RNAV (GPS) Y RWY 16R

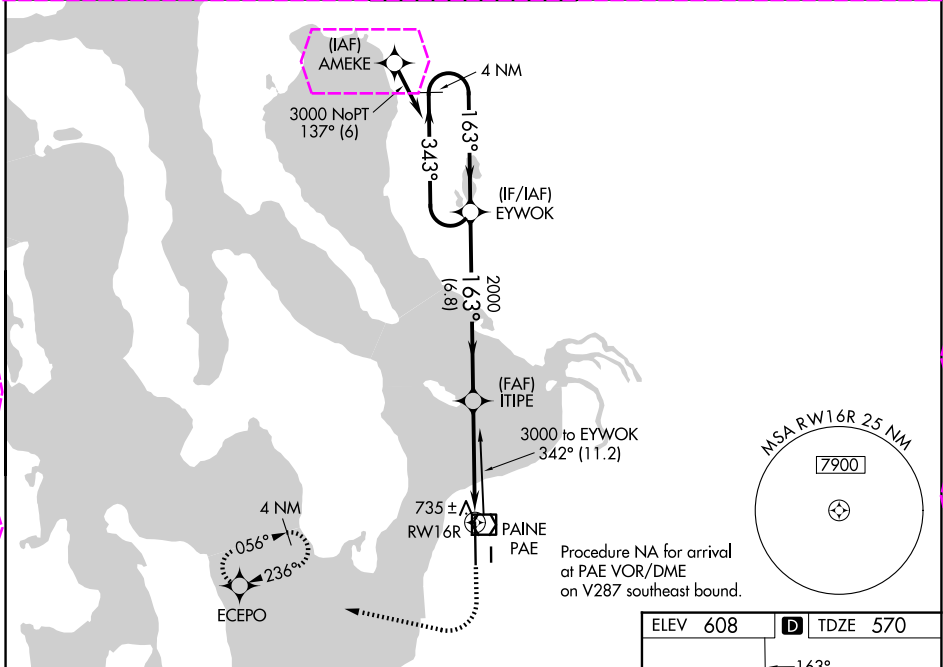
SEATTLE PAINE FLD INTL (P.A.E.)

For uncompensated Baro-VNAV systems, LNAV/VNAV NA below -5°C (23°F) or above 54°C (130°F). Circling Rwy 34R NA at below DME/DME RNP-0.3 NA. For inop ALS, increase LNAV/VNAV Cats A/B visibility to RVR 5000.



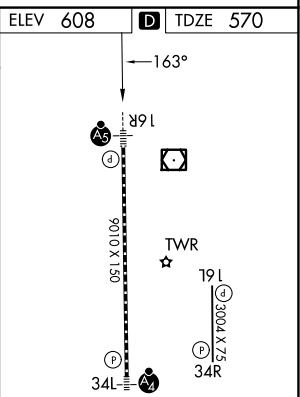
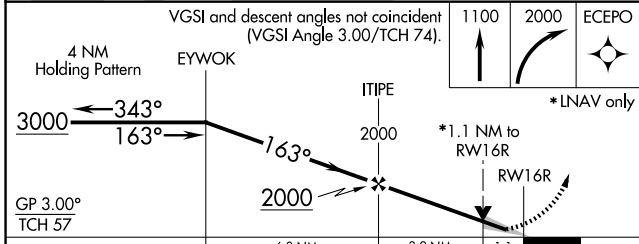
MISSED APPROACH: Climb to 1100 then climbing right turn to 2000 direct ECEPO and hold.

ATIS 128.65	SEATTLE APP CON 128.5 306.9	PAINE TOWER* 132.95 (CTAF) 256.7	GND CON 121.8 339.8	UNICOM 122.95
-----------------------	---------------------------------------	--	-------------------------------	-------------------------



NW-1, 127 NOV 2025 to 25 DEC 2025

NW-1, 127 NOV 2025 to 25 DEC 2025



CATEGORY	A	B	C	D
LPV DA	770/18	200 (200-½)		NA
LNAV/VNAV DA	894/30	324 (300-⅝)		NA
LNAV MDA	1000/24	430 (400-½)		NA
CIRCLING	1100-1	492 (500-1)		NA

TDZL/RCLS Rwy 16R
HIRL Rwy 16R-34L
REIL Rws 16L and 34R
MIRL Rwy 16L-34R

EVERETT, WASHINGTON
Amdt 2 07DEC17

47°54'N-122°17'W

RNAV (GPS) Y RWY 16R

SEATTLE PAINE FLD INTL (P.A.E.)