

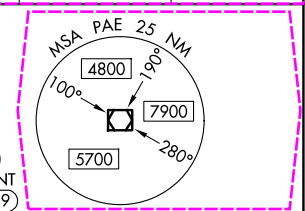
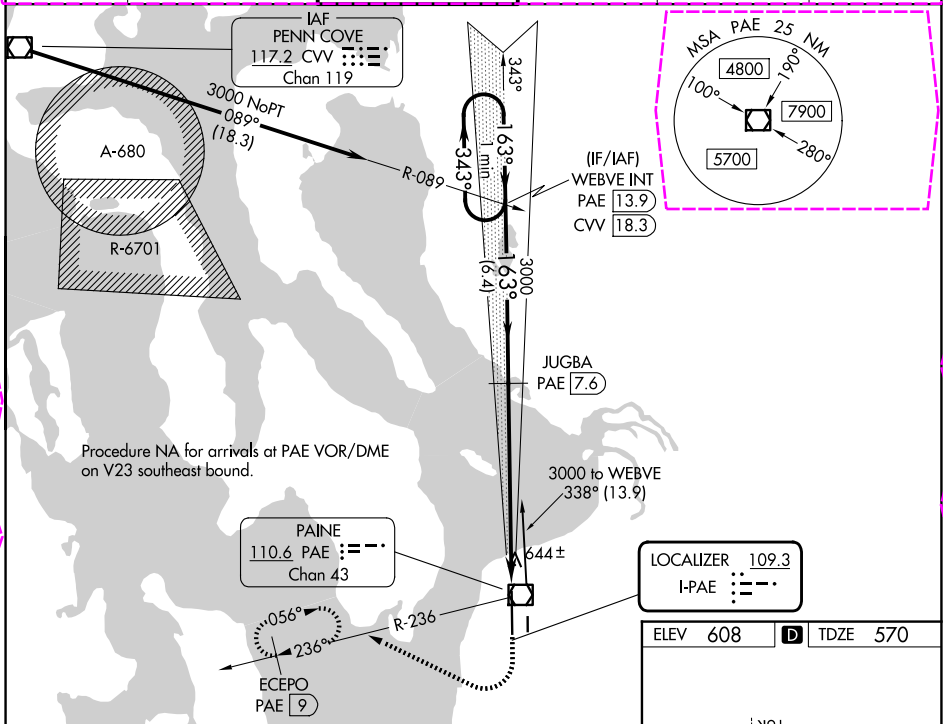
LOC I-PAE 109.3	APP CRS 163°	Rwy Ldg TDZE Apt Elev	9010 570 608
---------------------------	------------------------	-----------------------------	---

ILS Z RWY 16R (SA CAT II)

SEATTLE PAINE FLD INTL (PAE)

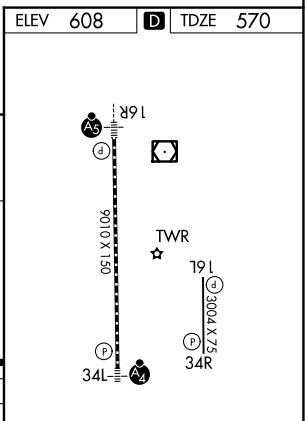
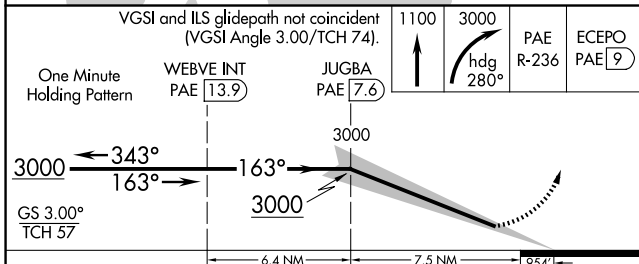
▼ DME required. Reduced Lighting: Requires specific OPSPEC, MSPEC, or LOA approval and use of autoland or HUD to touchdown. ▲ DME from PAE VOR/DME. Simultaneous reception of I-PAE and PAE DME required. Procedure NA when control tower closed.	MALSR 	MISSED APPROACH: Climb to 1100 then climbing right turn to 3000 on heading 280° and PAE VOR/DME R-236 to ECEPO/PAE 9 DME and hold, continue climb-in-hold to 3000.
--	-----------	--

ATIS 128.65	SEATTLE APP CON 128.5 306.9	PAINE TOWER ★ 132.95 (CTAF) 0 256.7	GND CON 121.8 339.8	CLNC DEL 127.175	UNICOM 122.95
-----------------------	---------------------------------------	---	-------------------------------	----------------------------	-------------------------



NW-1, 30 OCT 2025 to 27 NOV 2025

NW-1, 30 OCT 2025 to 27 NOV 2025



CATEGORY	A	B	C	D
S-ILS 16R	RA 116/12 100 DA 670			

SA CATEGORY II ILS - SPECIAL AIRCREW & AIRCRAFT CERTIFICATION REQUIRED

TDZ/CL Rwy 16R
HIRL Rwy 16R-34L
REIL Rws 16L and 34R
MIRL Rwy 16L-34R

EVERETT, WASHINGTON

AL-142 (FAA)

25331

LOC I-PAE 109.3	APP CRS 163°	Rwy Ldg 9010
		TDZE 570
		Apft Elev 608

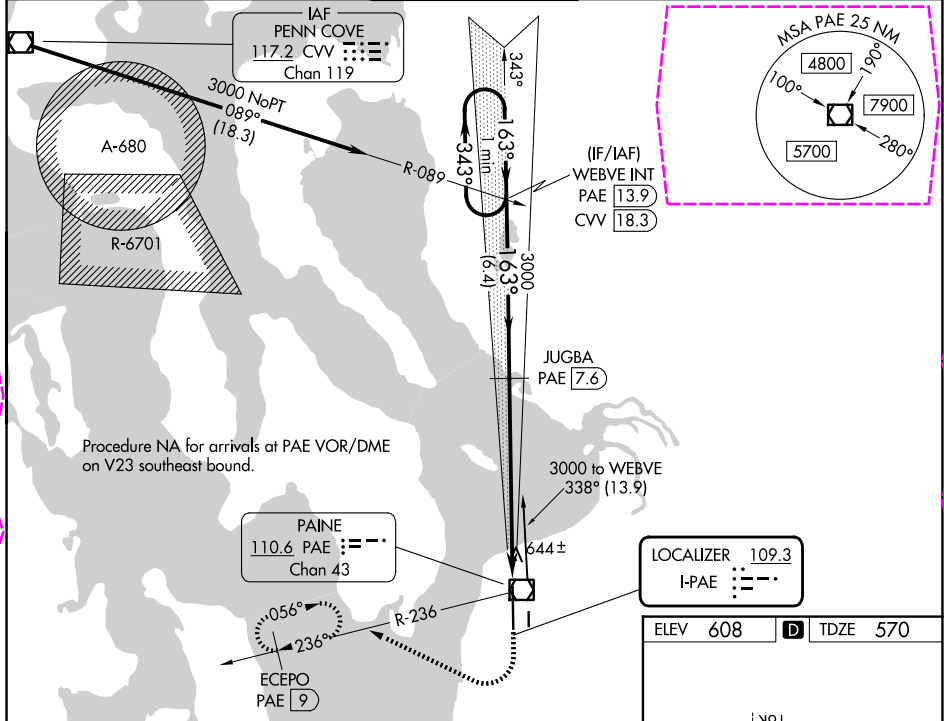
ILS Z RWY 16R (SA CAT II)

SEATTLE PAINE FLD INTL (PAE)

▼ DME required. Reduced Lighting: Requires specific OPSPEC, MSPEC, or LOA approval and use of autoland or HUD to touchdown.
▲ DME from PAE VOR/DME. Simultaneous reception of I-PAE and PAE DME required. Procedure NA when control tower closed.

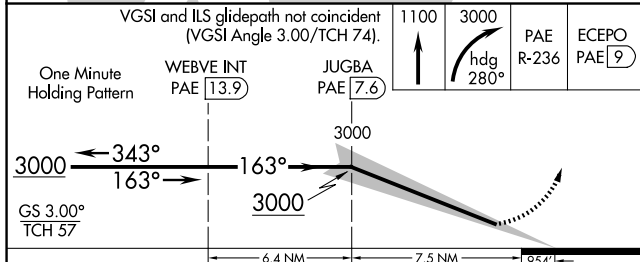
MALSR
AS MISSED APPROACH: Climb to 1100 then climbing right turn to 3000 on heading 280° and PAE VOR/DME R-236 to ECEPO/PAE 9 DME and hold, continue climb-in-hold to 3000.

ATIS 128.65	SEATTLE APP CON 128.5 306.9	PAINE TOWER* 132.95 (CTAF) 256.7	GND CON 121.8 339.8	UNICOM 122.95
-----------------------	---------------------------------------	--	-------------------------------	-------------------------

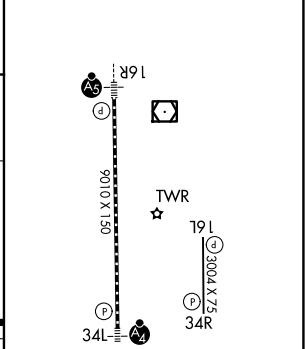


NW-1, 27 NOV 2025 to 25 DEC 2025

NW-1, 27 NOV 2025 to 25 DEC 2025



ELEV 608	D TDZE 570
----------	-------------------



CATEGORY	A	B	C	D
S-ILS 16R	RA 116/12 100 DA 670			

SA CATEGORY II ILS - SPECIAL AIRCREW & AIRCRAFT CERTIFICATION REQUIRED

TDZL/RCLS Rwy 16R
 HIRL Rwy 16R-34L
 REIL Rwys 16L and 34R
 MIRL Rwy 16L-34R

EVERETT, WASHINGTON
 Amdt 1A 01FEB18

47°54'N-122°17'W

SEATTLE PAINE FLD INTL (PAE) ILS Z RWY 16R (SA CAT II)