

DAYTON, OHIO

AL-107 (FAA)

25107

WAAS CH 42913 W06A	APP CRS 061°	Rwy Idg 10900 TDZE 998 App Elev 1009
--	------------------------	---

RNAV (GPS) Z RWY 6L

JAMES M COX DAYTON INTL (DAY)

RNP APCH.

Simultaneous approach authorized. LNAV procedure NA during simultaneous operations. For uncompensated Baro-VNAV systems, LNAV/VNAV NA below -19°C or above 54°C. Use of FD or AP required during simultaneous operations. For inop ALS, increase LNAV/VNAV all Cats visibility to RVR 5500 and LNAV Cats C/D to 1/4 SM.

ALSf-2



MISSED APPROACH: Climb to 3000 direct HEGUK and on track 331° to ICASI and on track 270° to DQN VOR/DME and hold.

ATIS
125.8

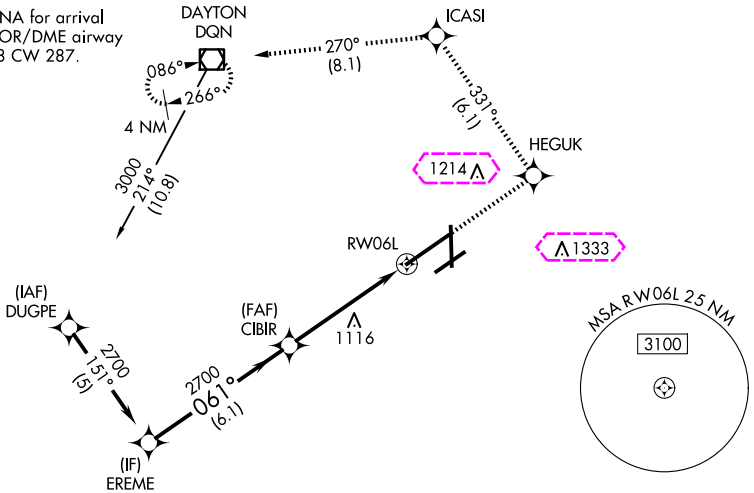
COLUMBUS APP CON
134.45 323.15

DAYTON TOWER
119.9 257.7

GND CON
121.9

CLNC DEL
121.75

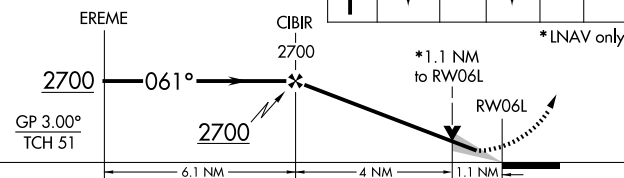
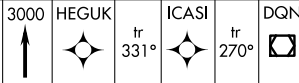
Procedure NA for arrival on DQN VOR/DME airway radials 208 CW 287.



EC-2, 30 OCT 2025 to 27 NOV 2025

EC-2, 30 OCT 2025 to 27 NOV 2025

VGSI and RNAV glidepath not coincident (VGSI Angle 3.00/TCH 67).



CATEGORY	A	B	C	D
LPV DA		1198/18	200 (200-½)	
LNAV/VNAV DA		1366/40	368 (400-¾)	
LNAV MDA	1420/24	422 (500-½)	1420/40 422 (500-¾)	1420/50 422 (500-1)
CIRCLING	1580-1	571 (600-1)	1580-1½ 571 (600-1½)	1640-2 631 (700-2)

ELEV 1009 TDZE 998

HIRL all Rwy's
TDZ/CL Rwy 6L
REL Rwy's 6R and 36

DAYTON, OHIO
Amdt 1E 03JAN19

39°54'N-84°13'W

JAMES M COX DAYTON INTL (DAY)
RNAV (GPS) Z RWY 6L

DAYTON, OHIO

AL-107 (FAA)

25331

WAAS CH 42913 W06A	APP CRS 061°	Rwy Ldg TDZE App Elev	10900 998 1009
--	------------------------	-----------------------------	---

RNAV (GPS) Z RWY 6L

JAMES M COX DAYTON INTL (DAY)

RNP APCH.

Simultaneous approach authorized. LNAV procedure NA during simultaneous operations. For uncompensated Baro-VNAV systems, LNAV/VNAV NA below -19°C or above 54°C. Use of FD or AP required during simultaneous operations. For inop ALS, increase LNAV/VNAV all Cats visibility to RVR 5500 and LNAV Cats C/D to 1/4 SM.

ALSf-2



MISSED APPROACH: Climb to 3000 direct HEGUK and on track 331° to ICASI and on track 270° to DQN VOR/DME and hold.

ATIS

125.8

COLUMBUS APP CON

134.45 323.15

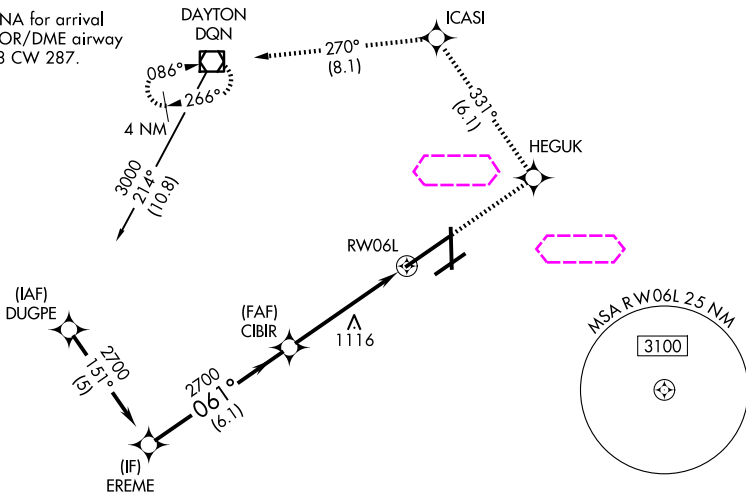
DAYTON TOWER

119.9 257.7

GND CON

121.9

Procedure NA for arrival on DQN VOR/DME airway radials 208 CW 287.

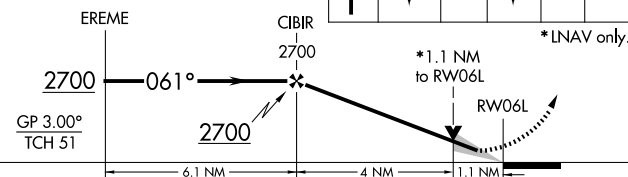


EC-2, 27 NOV 2025 to 25 DEC 2025

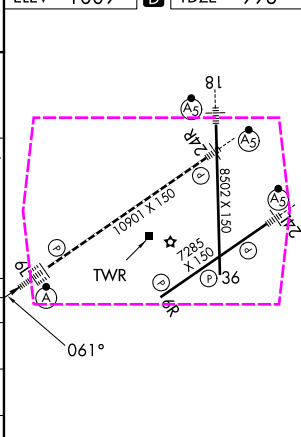
EC-2, 27 NOV 2025 to 25 DEC 2025

VGSI and RNAV glidepath not coincident (VGSI Angle 3.00/TCH 67).

3000	HEGUK	ICASI	DQN
↑	tr 331°	tr 270°	☐



ELEV 1009 TDZE 998



CATEGORY	A	B	C	D
LPV DA		1198/18	200 (200-½)	
LNAV/VNAV DA		1366/40	368 (400-¾)	
LNAV MDA	1420/24	422 (500-½)	1420/40 422 (500-¾)	1420/50 422 (500-1)
CIRCLING	1580-1	571 (600-1)	1580-1½ 571 (600-1½)	1640-2 631 (700-2)

HIRL - all Rwy
TDZL/RCLS Rwy 6L
REL Rwy 6R and 36

DAYTON, OHIO
Amdt 1E 03JAN19

39°54'N-84°13'W

JAMES M COX DAYTON INTL (DAY) RNAV (GPS) Z RWY 6L