

DAYTON, OHIO

AL-107 (FAA)

25107

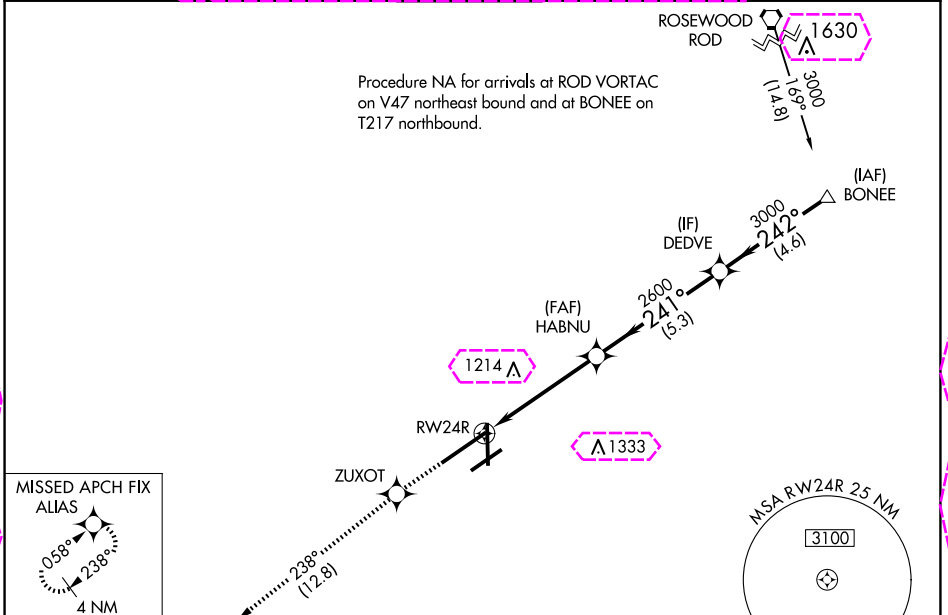
WAAS CH 66013 W24B	APP CRS 241°	Rwy Idg 10900 TDZE 997 Apt Elev 1009
--	------------------------	---

RNAV (GPS) Z RWY 24R

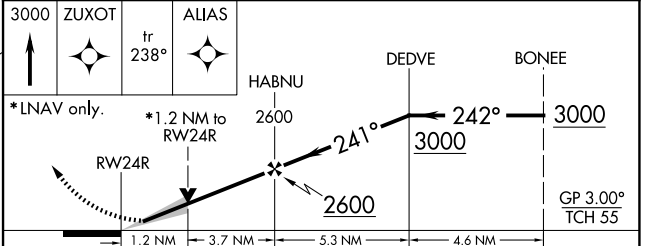
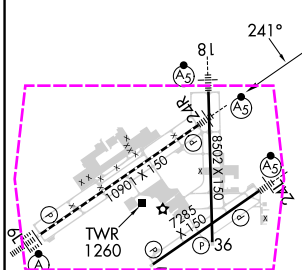
JAMES M COX DAYTON INTL (DAY)

RNP APCH	<p>▼ For uncompensated Baro-VNAV systems, LNAV/VNAV NA below -19°C or above 54°C. Simultaneous approach authorized. LNAV procedure NA during simultaneous operations. Use of FD or AP required during simultaneous operations. For inop ALS, increase LNAV/VNAV all Cats visibility to RVR 4500.</p>	<p>MALSR</p>	<p>MISSED APPROACH: Climb to 3000 direct ZUXOT and on track 238° to ALIAS and hold.</p>
----------	--	--------------	---

<p>ATIS 125.8</p>	<p>COLUMBUS APP CON 134.45 323.15</p>	<p>DAYTON TOWER 119.9 257.7</p>	<p>GND CON 121.9</p>	<p>CLNC DEL 121.75</p>
--------------------------	--	--	-----------------------------	-------------------------------



ELEV 1009	D	TDZE 997
-----------	----------	----------



CATEGORY	A	B	C	D
LPV DA		1203/24	206 (200-½)	
LNAV/VNAV DA		1294/24	297 (300-½)	
LNAV MDA	1440/24	443 (500-½)	1440/45	443 (500-¾)
C CIRCLING	1580-1	571 (600-1)	1580-1½ 571 (600-1½)	1640-2 631 (700-2)

HIRL all Rwy's
TDZ/CL Rwy 6L
REIL Rwy's 6R and 36

DAYTON, OHIO
Amdt 2B 03JAN19

39°54'N-84°13'W

JAMES M COX DAYTON INTL (DAY) RNAV (GPS) Z RWY 24R

EC-2 30 OCT 2025 to 27 NOV 2025

EC-2 30 OCT 2025 to 27 NOV 2025

DAYTON, OHIO

AL-107 (FAA)

25331

WAAS CH 66013 W24B	APP CRS 241°	Rwy Ldg 10900 TDZE 997 Apt Elev 1009
--	------------------------	---

RNAV (GPS) Z RWY 24R

JAMES M COX DAYTON INTL (DAY)

RNP APCH. ▼ For uncompensated Baro-VNAV systems, LNAV/VNAV NA below -19°C or above 54°C. Simultaneous approach authorized. LNAV procedure NA during simultaneous operations. Use of FD or AP required during simultaneous operations. For inap ALS, increase LNAV/VNAV all Cats visibility to RVR 4500.	MALSR 	MISSED APPROACH: Climb to 3000 direct ZUXOT and on track 238° to ALIAS and hold.
--	-----------	--

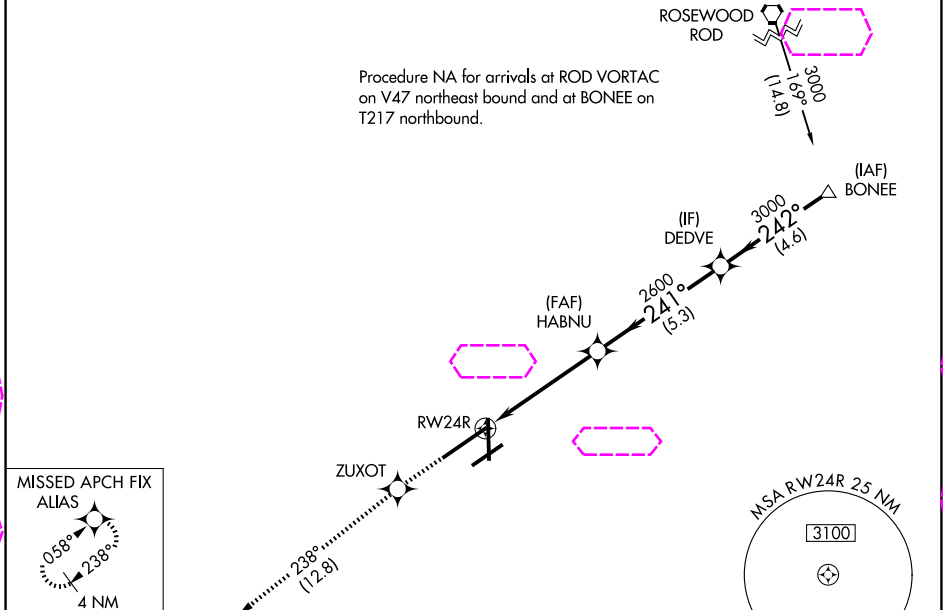
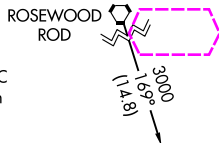
ATIS
125.8

COLUMBUS APP CON
134.45 323.15

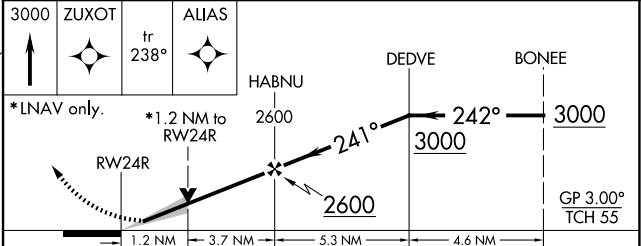
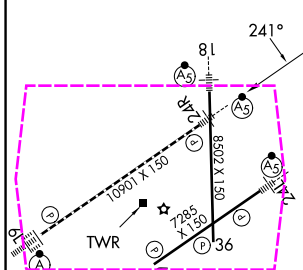
DAYTON TOWER
119.9 257.7

GND CON
121.9

Procedure NA for arrivals at ROD VORTAC on V47 northeast bound and at BONEE on T217 northbound.



ELEV 1009	D	TDZE 997
-----------	----------	----------



CATEGORY	A	B	C	D
LPV DA		1203/24	206 (200-½)	
LNAV/VNAV DA		1294/24	297 (300-½)	
LNAV MDA	1440/24	443 (500-½)	1440/45	443 (500-¾)
CIRCLING	1580-1	571 (600-1)	1580-1½ 571 (600-1½)	1640-2 631 (700-2)

HIRL all Rwy's
TDZL/RCLS Rwy 6L
REIL Rwy's 6R and 36

DAYTON, OHIO
Amdt 2B 03JAN19

39°54'N-84°13'W

RNAV (GPS) Z RWY 24R

EC-2 27 NOV 2025 to 25 DEC 2025

EC-2 27 NOV 2025 to 25 DEC 2025