

DAYTON, OHIO

AL-107 (FAA)

25107

RNAV (RNP) Y RWY 24R

JAMES M COX DAYTON INTL (DAY)

APP CRS	Rwy Idg	10900
241°	TDZE	997
	Apf Elev	1009

RNP AR APCH.

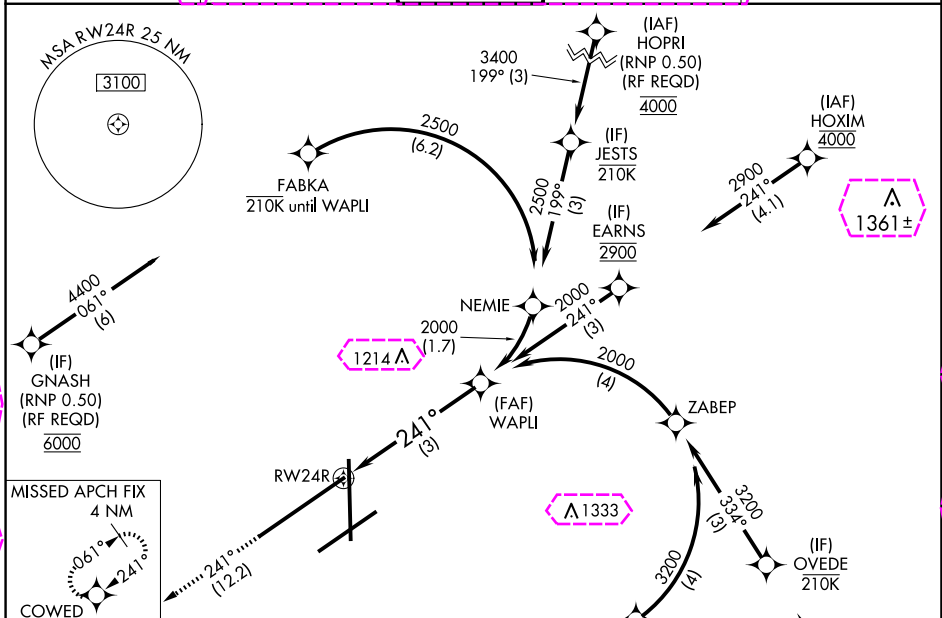
▼ For inop ALS, increase RNP 0.10 all Cats visibility to RVR 5500 and RNP 0.30 all Cats visibility to 1 3/8 SM. For uncompensated Baro-VNAV systems, procedure NA below -19°C or above 54°C.

MALSR

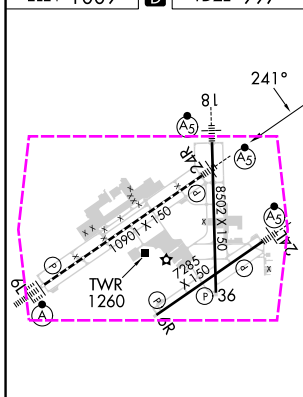


MISSED APPROACH: Climb to 3000 on track 241° COWED and hold.

ATIS 125.8	COLUMBUS APP CON 134.45 323.15	DAYTON TOWER 119.9 257.7	GND CON 121.9	CLNC DEL 121.75
-----------------------------	---	---	--------------------------------	----------------------------------



ELEV 1009	D	TDZE 997
-----------	----------	----------



HIRL all Rwy's
TDZ/CL Rwy 6L
REIL Rwy's 6R and 36



CATEGORY	A	B	C	D
RNP 0.10 DA		1334/35	337 (400-5/8)	
RNP 0.30 DA		1418/50	421 (500-1)	

AUTHORIZATION REQUIRED

DAYTON, OHIO
Orig-C 16AUG18

JAMES M COX DAYTON INTL (DAY)
39°54'N-84°13'W **RNAV (RNP) Y RWY 24R**

EC-2 30 OCT 2025 to 27 NOV 2025

DAYTON, OHIO

AL-107 (FAA)

25331

RNAV (RNP) Y RWY 24R

JAMES M COX DAYTON INTL (DAY)

APP CRS	Rwy Ldg	10900
241°	TDZE	997
	Apf Elev	1009

RNP AR APCH.

For inop ALS, increase RNP 0.10 all Cats visibility to RVR 5500 and RNP 0.30 all Cats visibility to 1 3/8 SM. For uncompensated Baro-VNAV systems, procedure NA below -19°C or above 54°C.

MALSR



MISSED APPROACH: Climb to 3000 on track 241° COWED and hold.

ATIS

125.8

COLUMBUS APP CON

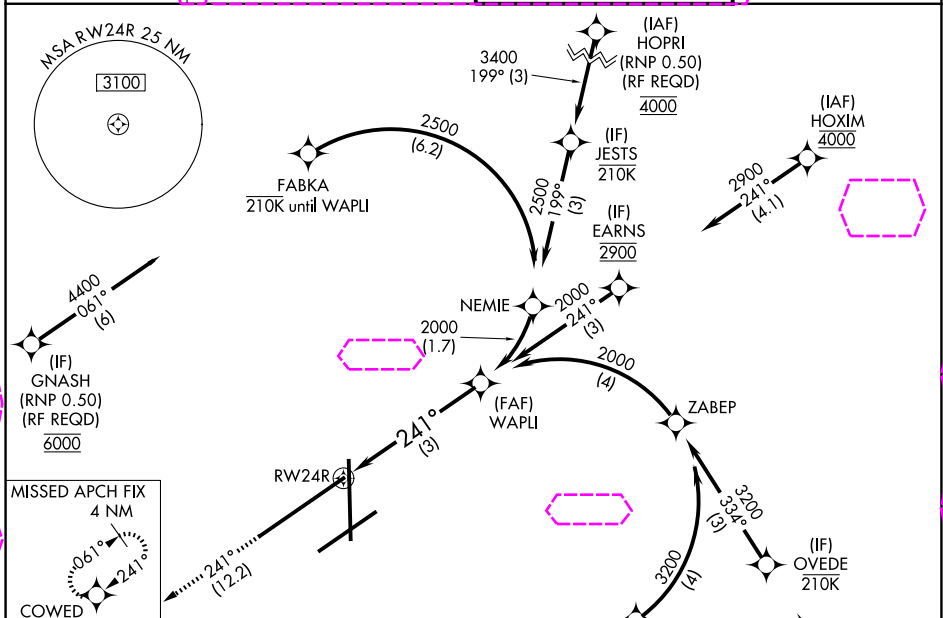
134.45 323.15

DAYTON TOWER

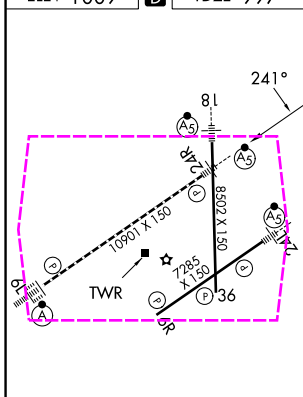
119.9 257.7

GND CON

121.9



ELEV 1009 TDZE 997



3000	↑	tr 241°	COWED	See planview for multiple IF locations.	WAPLI 2000
					2000
					GP 3.00°
					TCH 55
3 NM					

CATEGORY	A	B	C	D
RNP 0.10 DA		1334/35	337 (400-5%)	
RNP 0.30 DA		1418/50	421 (500-1)	

AUTHORIZATION REQUIRED

DAYTON, OHIO
Orig-C 16AUG18

39°54'N-84°13'W
JAMES M COX DAYTON INTL (DAY)
RNAV (RNP) Y RWY 24R

EC-2, 27 NOV 2025 to 25 DEC 2025

EC-2, 27 NOV 2025 to 25 DEC 2025