

DAYTON, OHIO

AL-107 (FAA)

25163

APP CRS 005°	Rwy Ldg TDZE Apt Elev	8502 1008 1009
------------------------	-----------------------------	---

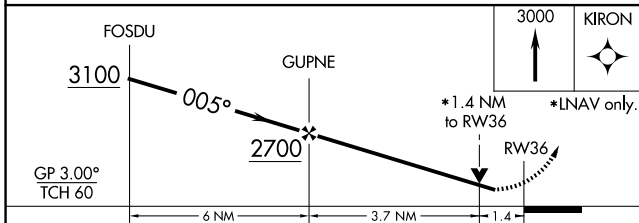
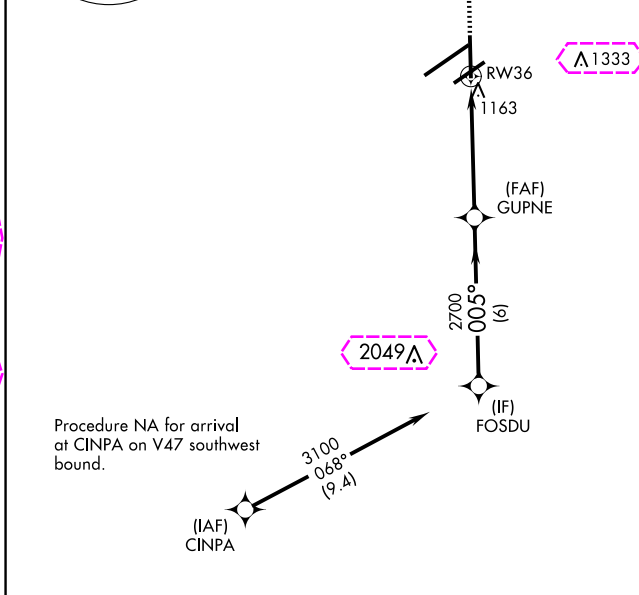
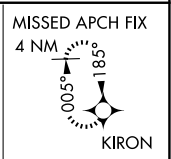
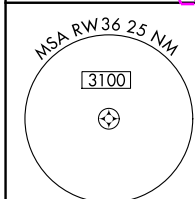
RNAV (GPS) RWY 36

JAMES M COX DAYTON INTL (DAY)

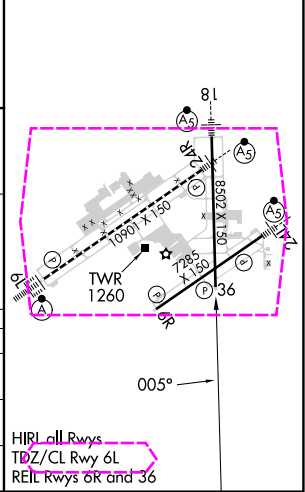
For uncompensated Baro-VNAV systems, LNAV/VNAV NA below -19°C (-2°F) or above 54°C (130°F). DME/DME RNP-0.3 NA.
RWY 36 helicopter visibility reduction below ¾ SM NA.

MISSED APPROACH: Climb to 3000 direct to KIRON and hold.

ATIS 125.8	COLUMBUS APP CON 134.45 323.15	DAYTON TOWER 119.9 257.7	GND CON 121.9	CLNC DEL 121.75
----------------------	--	------------------------------------	-------------------------	---------------------------



ELEV 1009	D	TDZE 1008
-----------	----------	-----------



CATEGORY	A	B	C	D
LNAV/VNAV DA	1449-1½ 441 (500-1½)			
LNAV MDA	1500-1	492 (500-1)	1500-1¼ 492 (500-1¼)	1500-1½ 492 (500-1½)
C CIRCLING	1580-1	571 (600-1)	1580-1½ 571 (600-1½)	1640-2 631 (700-2)

HIRL Loll Rwy's
TDZ/CL Rwy 6L
REL Rwy's 6R and 36

DAYTON, OHIO
Amdt 1A 24MAY18

39°54'N-84°13'W

JAMES M COX DAYTON INTL (DAY)
RNAV (GPS) RWY 36

EC-2, 30 OCT 2025 to 27 NOV 2025

EC-2, 30 OCT 2025 to 27 NOV 2025

DAYTON, OHIO

AL-107 (FAA)

25331

APP CRS **005°**
 Rwy Ldg **8502**
 TDZE **1008**
 Apt Elev **1009**

RNAV (GPS) RWY 36

JAMES M COX DAYTON INTL (DAY)

For uncompensated Baro-VNAV systems, LNAV/VNAV NA below -19°C (-2°F) or above 54°C (130°F). DME/DME RNP-0.3 NA.
 Rwy 36 helicopter visibility reduction below 3/4 SM NA.

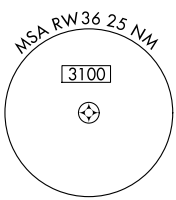
MISSED APPROACH: Climb to 3000 direct to KIRON and hold.

ATIS **125.8**

COLUMBUS APP CON **134.45 323.15**

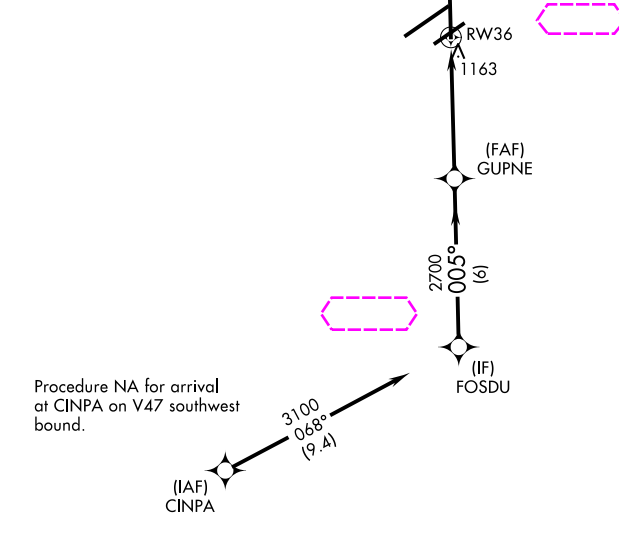
DAYTON TOWER **119.9 257.7**

GND CON **121.9**

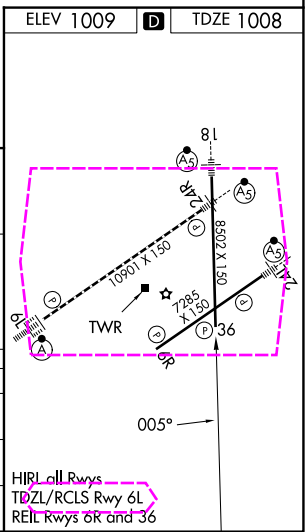
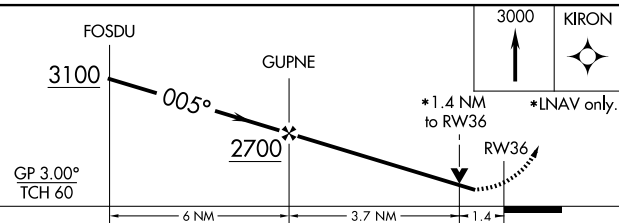


EC-2, 127 NOV 2025 to 25 DEC 2025

EC-2, 27 NOV 2025 to 25 DEC 2025



ELEV 1009 **D** TDZE 1008



CATEGORY	A	B	C	D
LNAV/VNAV DA	1449-1½ 441 (500-1½)			
LNAV MDA	1500-1	492 (500-1)	1500-1¼ 492 (500-1¼)	1500-1½ 492 (500-1½)
CIRCLING	1580-1	571 (600-1)	1580-1½ 571 (600-1½)	1640-2 631 (700-2)

DAYTON, OHIO
 Amdt 1A 24MAY18

39°54'N-84°13'W

JAMES M COX DAYTON INTL (DAY)
RNAV (GPS) RWY 36