

DAYTON, OHIO

AL-107 (FAA)

25107

WAAS CH 50414 W24A	APP CRS 241°	Rwy Idg TDZE Apt Elev	7001 1007 1009
--	------------------------	-----------------------------	---

RNAV (GPS) RWY 24L

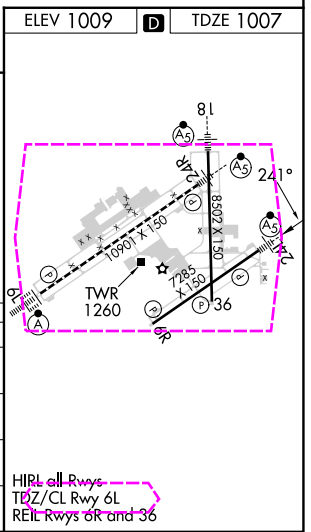
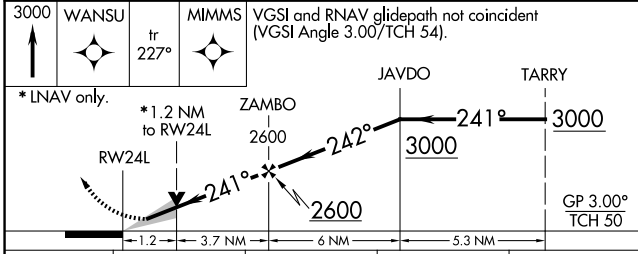
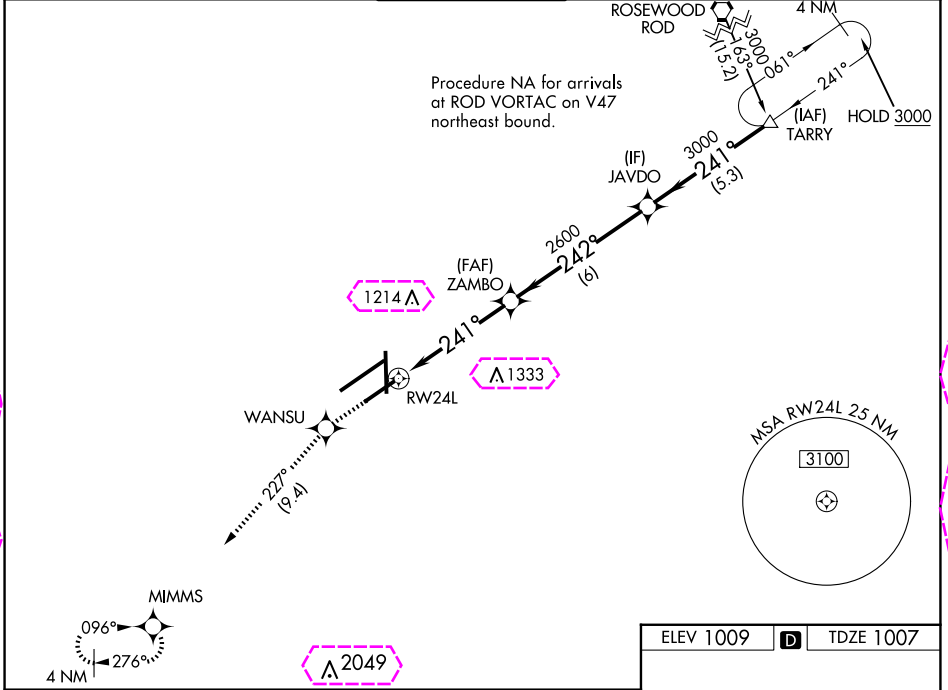
JAMES M COX DAYTON INTL (DAY)

RNP APCH.

Simultaneous approach authorized. LNAV procedure NA during simultaneous operations. For uncompensated Baro-VNAV systems, LNAV/VNAV NA below -19°C or above 54°C. Use of FD or AP required during simultaneous operations. For inop ALS, increase LNAV/VNAV all Cats RVR to 4500. **RVR 1800 authorized with use of FD or AP or HUD to DA.

MALS R MISSED APPROACH:
Climb to 3000 direct WANSU and on track 227° to MIMMS and hold.

ATIS 125.8	COLUMBUS APP CON 134.45 323.15	DAYTON TOWER 119.9 257.7	GND CON 121.9	CLNC DEL 121.75
----------------------	--	------------------------------------	-------------------------	---------------------------



CATEGORY	A	B	C	D
LPV DA**	1207/24		200 (200-½)	
LNAV/VNAV DA	1327/24		320 (400-½)	
LNAV MDA	1440/24 433 (500-½)		1440/40 433 (500-¾)	
CIRCLING	1580-1 571 (600-1)		1580-1½ 571 (600-1½) 1640-2 631 (700-2)	

DAYTON, OHIO
Amdt 2 03JAN19

39°54'N-84°13'W

JAMES M COX DAYTON INTL (DAY) RNAV (GPS) RWY 24L

EC-2, 30 OCT 2025 to 27 NOV 2025

EC-2, 30 OCT 2025 to 27 NOV 2025

DAYTON, OHIO

AL-107 (FAA)

25331

WAAS CH 50414 W24A	APP CRS 241°	Rwy Ldg TDZE Apt Elev	7001 1007 1009
--	------------------------	-----------------------------	---

RNAV (GPS) RWY 24L

JAMES M COX DAYTON INTL (DAY)

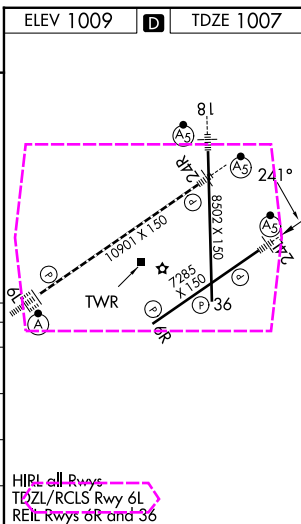
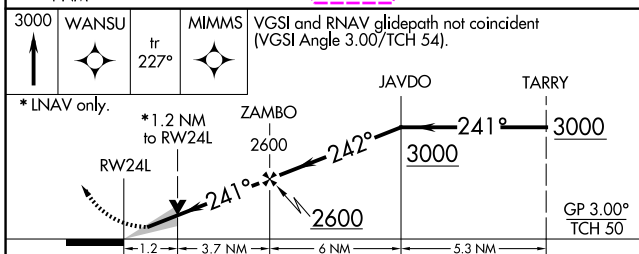
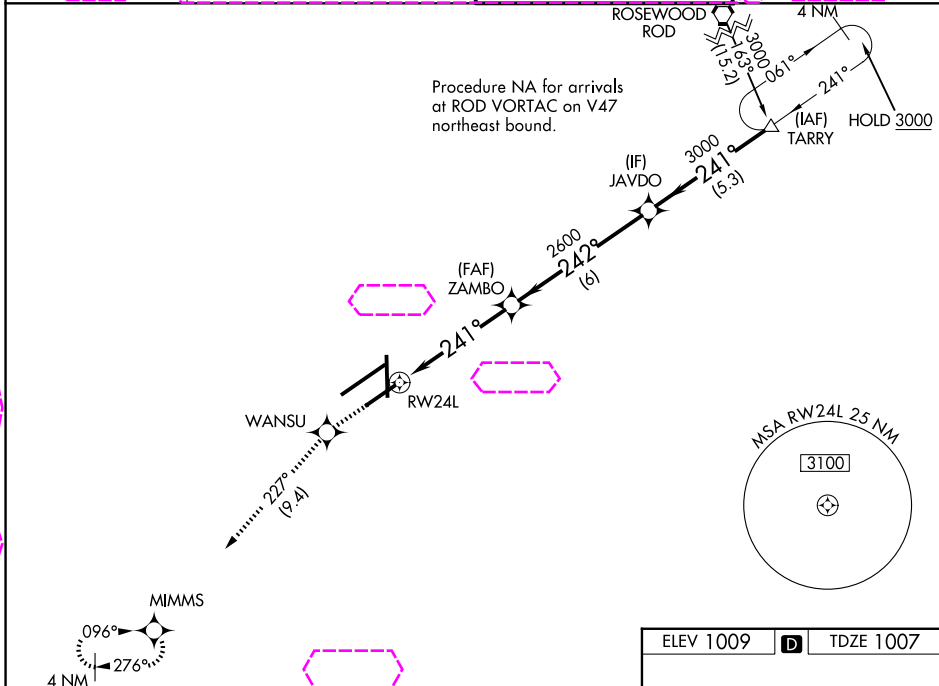
RNP APCH.

Simultaneous approach authorized. LNAV procedure NA during simultaneous operations. For uncompensated Baro-VNAV systems, LNAV/VNAV NA below -19°C or above 54°C. Use of FD or AP required during simultaneous operations. For inop ALS, increase LNAV/VNAV all Cats RVR to 4500. **RVR 1800 authorized with use of FD or AP or HUD to DA.



MISSED APPROACH:
Climb to 3000 direct WANSU and on track 227° to MIMMS and hold.

ATIS 125.8	COLUMBUS APP CON 134.45 323.15	DAYTON TOWER 119.9 257.7	GND CON 121.9
----------------------	--	------------------------------------	-------------------------



CATEGORY	A	B	C	D
LPV DA**	1207/24		200 (200-½)	
LNAV/VNAV DA	1327/24		320 (400-½)	
LNAV MDA	1440/24 433 (500-½)		1440/40 433 (500-¾)	
CIRCLING	1580-1 571 (600-1)		1580-1½ 571 (600-1½) 1640-2 631 (700-2)	

DAYTON, OHIO
Amdt 2 03JAN19

39°54'N-84°13'W

RNAV (GPS) RWY 24L

EC-2, 27 NOV 2025 to 25 DEC 2025

EC-2, 27 NOV 2025 to 25 DEC 2025