

DAYTON, OHIO

AL-107 (FAA)

25107

LOC I-ATD 108.9	APP CRS 061°	Rwy Idg 10900 TDZE 998 Apt Elev 1009
---------------------------	------------------------	---

ILS or LOC RWY 6L

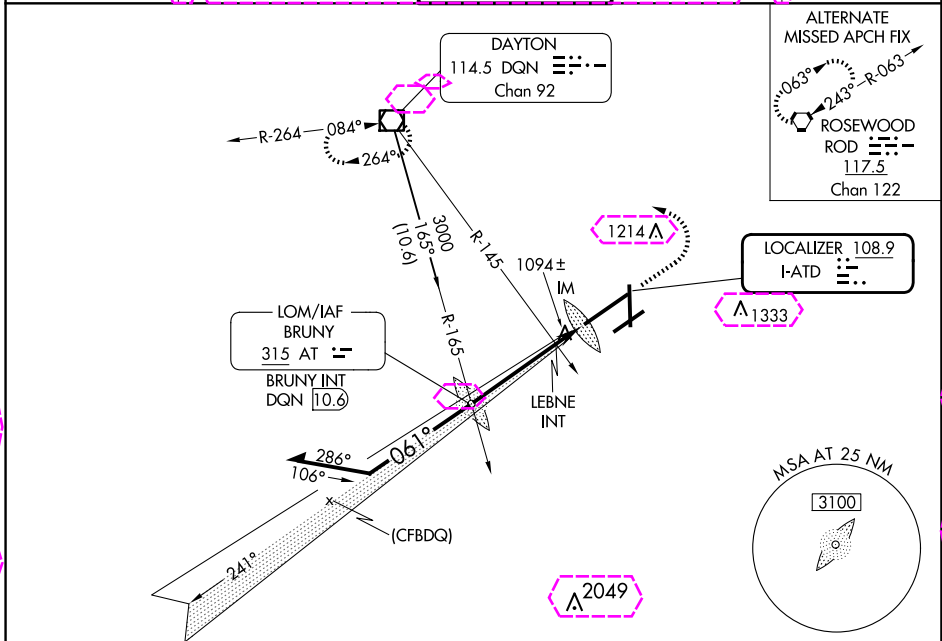
JAMES M COX DAYTON INTL (DAY)

▽ Simultaneous approach authorized.
▲ For inop ALSF-2, increase S-LOC 6L Cat C/D visibility to 1½ mile.

ALSF-2

MISSED APPROACH: Climb to 2000 then climbing left turn to 3000 direct DQN VOR/DME and hold.

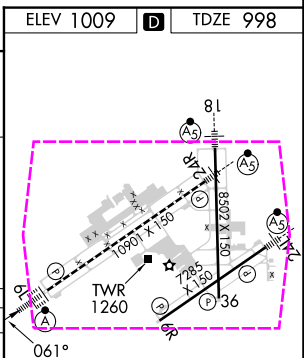
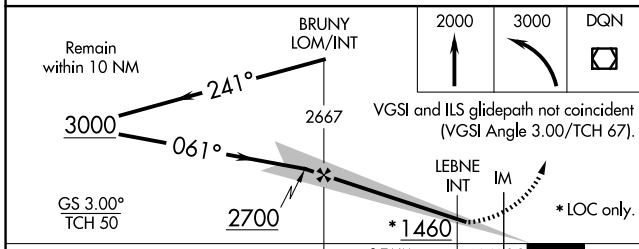
ATIS 125.8	COLUMBUS APP CON 134.45 323.15	DAYTON TOWER 119.9 257.7	GND CON 121.9	CINC DEL 121.75
----------------------	--	------------------------------------	-------------------------	---------------------------



EC-2, 30 OCT 2025 to 27 NOV 2025

EC-2, 30 OCT 2025 to 27 NOV 2025

ELEV 1009	D	TDZE 998
-----------	----------	----------



CATEGORY	A		B		C		D	
	S-ILS 6L	1198/18 200 (200-½)						
S-LOC 6L	1460/24	462 (500-½)	1460/50		462 (500-1)			
C CIRCLING	1580-1	571 (600-1)	1580-1½		631 (700-2)			
LEBNE FIX MINIMUMS (DUAL VOR RECEIVERS REQUIRED)								
S-LOC 6L	1380/24	382 (400-½)	1380/35		382 (400-¾)			
C CIRCLING	1580-1	571 (600-1)	1580-1½		631 (700-2)			
FAF to MAP 5 NM								
Knots		60	90	120	150	180		
Min:Sec		5:00	3:20	2:30	2:00	1:40		

DAYTON, OHIO
Amdt 10 26MAY16

39°54'N-84°13'W

JAMES M COX DAYTON INTL (DAY) ILS or LOC RWY 6L

DAYTON, OHIO

AL-107 (FAA)

25331

LOC I-ATD 108.9	APP CRS 061°	Rwy Ldg 10900
		TDZE 998
		Apt Elev 1009

ILS or LOC RWY 6L

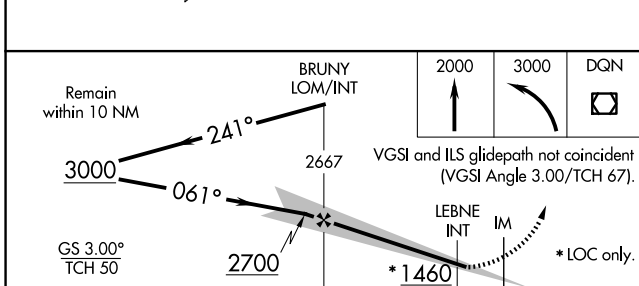
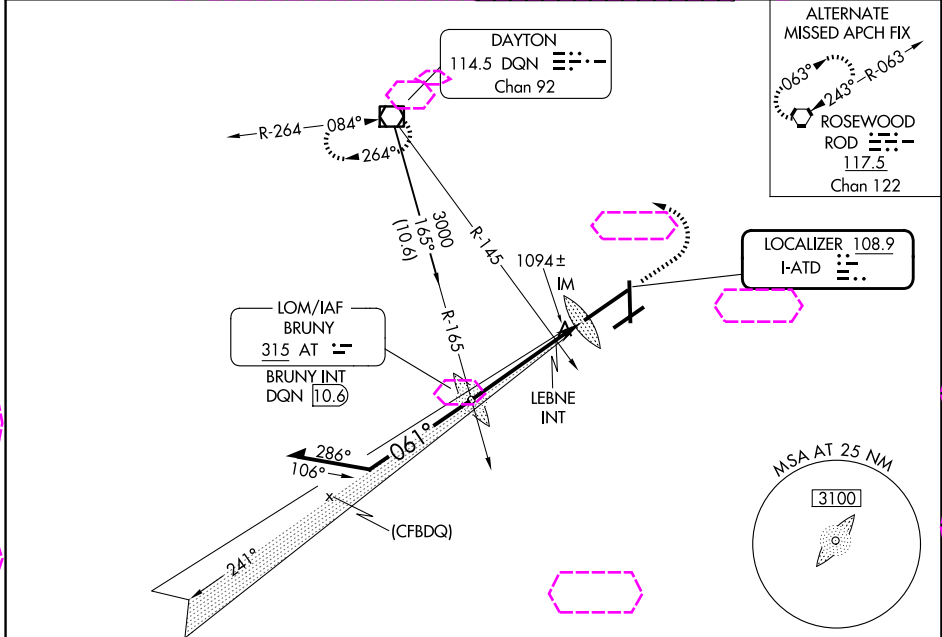
JAMES M COX DAYTON INTL (DAY)

Simultaneous approach authorized.
For inop ALSF-2, increase S-LOC 6L Cat C/D visibility to 1½ mile.

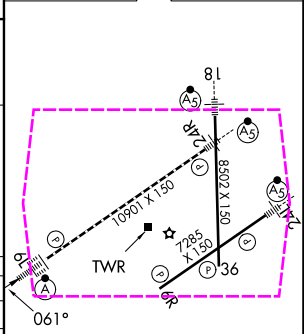
ALSF-2

MISSED APPROACH: Climb to 2000 then climbing left turn to 3000 direct DQN VOR/DME and hold.

ATIS 125.8	COLUMBUS APP CON 134.45 323.15	DAYTON TOWER 119.9 257.7	GND CON 121.9
----------------------	--	------------------------------------	-------------------------



ELEV 1009	D	TDZE 998
-----------	----------	----------



CATEGORY	A	B	C	D
S-ILS 6L	1198/18 200 (200-½)			
S-LOC 6L	1460/24	462 (500-½)	1460/50	462 (500-1)
CIRCLING	1580-1	571 (600-1)	1580-1½ 571 (600-1½)	1640-2 631 (700-2)
LEBNE FIX MINIMUMS (DUAL VOR RECEIVERS REQUIRED)				
S-LOC 6L	1380/24	382 (400-½)	1380/35	382 (400-¾)
CIRCLING	1580-1	571 (600-1)	1580-1½ 571 (600-1½)	1640-2 631 (700-2)

HIRL all Rwy's					
TDZL/RCLS Rwy 6L					
REL Rwy's 6R and 36					
FAF to MAP 5 NM					
Knots	60	90	120	150	180
Min:Sec	5:00	3:20	2:30	2:00	1:40

DAYTON, OHIO
Amdt 10 26MAY16

39°54'N-84°13'W

JAMES M COX DAYTON INTL (DAY) ILS or LOC RWY 6L

EC-2 127 NOV 2025 to 25 DEC 2025

EC-2 27 NOV 2025 to 25 DEC 2025