

COLUMBUS, OHIO

AL-94 (FAA)

25163

WAAS CH <b>48999</b> <b>W28A</b>	APP CRS <b>281°</b>	Rwy Ldg TDZE Apt Elev	<b>10114</b> <b>815</b> <b>815</b>
--	------------------------	-----------------------------	--

# RNAV (GPS) Y RWY 28L

JOHN GLENN COLUMBUS INTL (CMH)

**RNP APCH**

Simultaneous approach authorized. For uncompensated Baro-VNAV systems, LNAV/VNAV NA below -19°C or above 54°C. LNAV procedure NA during simultaneous operations. Use of FD or AP providing RNAV track guidance required during simultaneous operations. For ~~prop ALS~~, increase LNAV Cat C/D visibility to 1% SM.

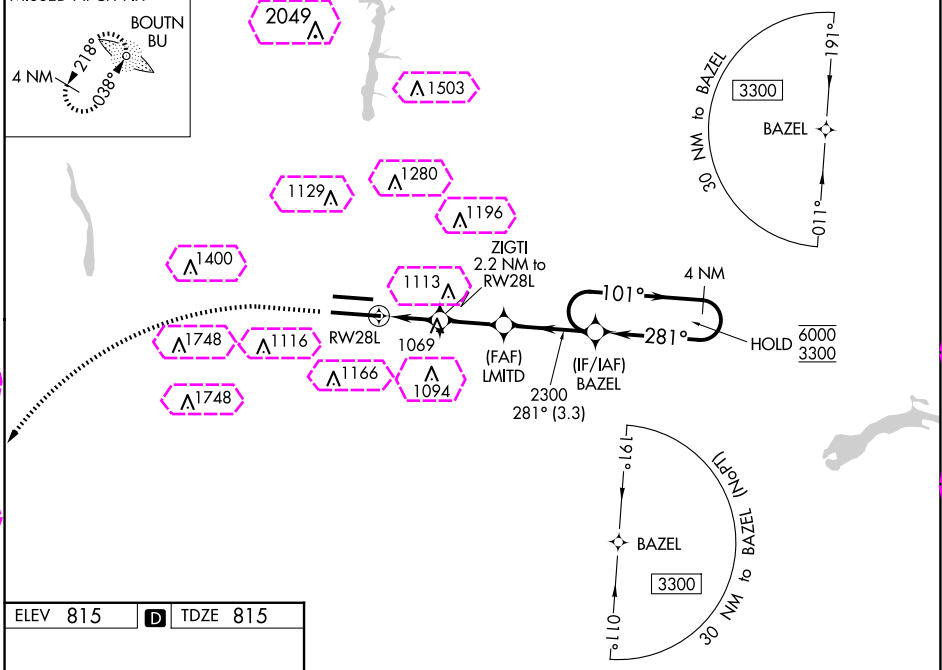
MALSR



MISSED APPROACH: Climb to 1400 then climbing left turn to 3000 direct BOUTN LOM and hold.

D-ATIS <b>124.6</b>	COLUMBUS APP CON <b>125.95 371.975</b>	COLUMBUS TOWER <b>132.7 257.8</b>	GND CON <b>121.9 348.6</b>	CLNC DEL <b>126.3</b>	CPDLC
------------------------	---	--------------------------------------	-------------------------------	--------------------------	-------

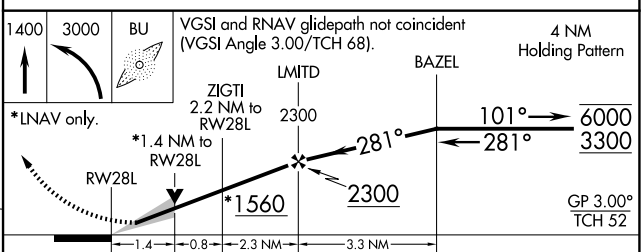
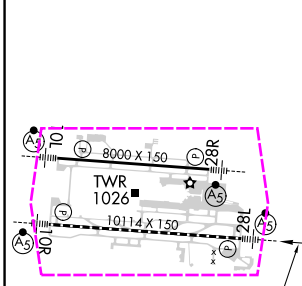
**MISSED APCH FIX**



EC-2, 30 OCT 2025 to 27 NOV 2025

EC-2, 30 OCT 2025 to 27 NOV 2025

ELEV 815	<b>D</b>	TDZE 815
----------	----------	----------



CATEGORY	A	B	C	D
LPV DA		1015/18	200 (200-½)	
LNAV/VNAV DA		1237/40	422 (500-¾)	
LNAV MDA	1320/24	505 (600-½)	1320/55	505 (600-1)
<b>CIRCLING</b>	1340-1	525 (600-1)	1520-2 705 (800-2)	1520-2¼ 705 (800-2¼)

TBZ/CL Rwy 10R-28L  
HIRL Rwy 10R-28L and 10L-28R

40°00'N-82°54'W

# JOHN GLENN COLUMBUS INTL (CMH)

## RNAV (GPS) Y RWY 28L

COLUMBUS, OHIO

AL-94 (FAA)

25331

WAAS CH <b>48999</b> <b>W28A</b>	APP CRS <b>281°</b>	Rwy Ldg TDZE Apt Elev	<b>10114</b> <b>815</b> <b>815</b>
--	------------------------	-----------------------------	--

# RNAV (GPS) Y RWY 28L

JOHN GLENN COLUMBUS INTL (CMH)

RNP APCH

Simultaneous approach authorized. For uncompensated Baro-VNAV systems, LNAV/VNAV NA below -19°C or above 54°C. LNAV procedure NA during simultaneous operations. Use of FD or AP providing RNAV track guidance required during simultaneous operations. For inop ALS, increase LNAV Cat C/D visibility to 1 1/2 SM.

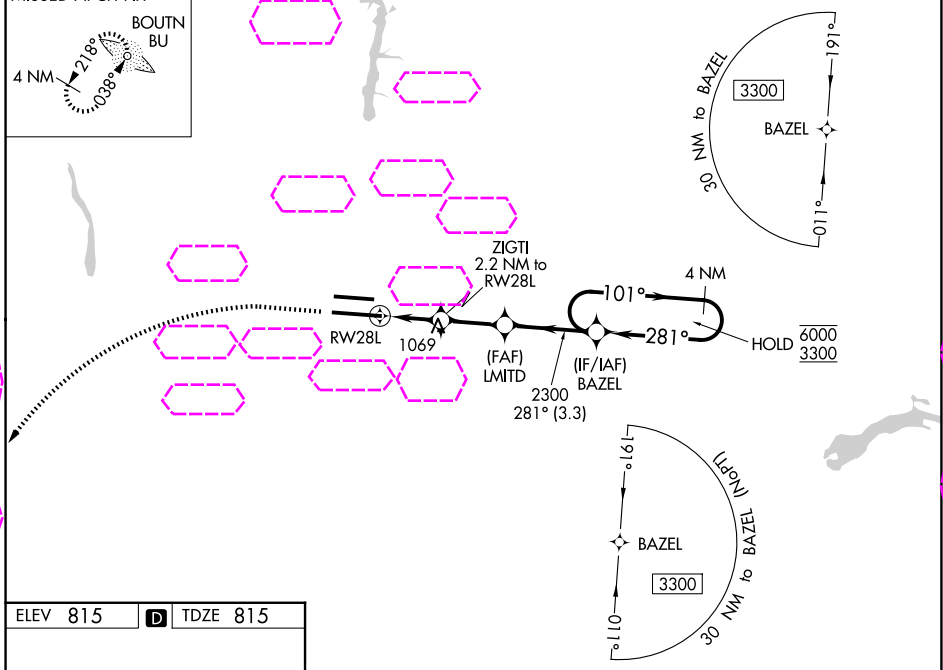
MALSR



MISSED APPROACH: Climb to 1400 then climbing left turn to 3000 direct BOUTN LOM and hold.

D-ATIS <b>124.6</b>	COLUMBUS APP CON <b>125.95 371.975</b>	COLUMBUS TOWER <b>132.7 257.8</b>	GND CON <b>121.9 348.6</b>
------------------------	---	--------------------------------------	-------------------------------

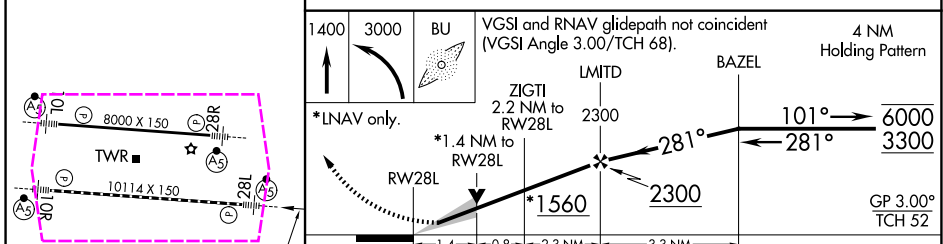
MISSED APCH FIX



EC-2, 127 NOV 2025 to 25 DEC 2025

EC-2, 27 NOV 2025 to 25 DEC 2025

ELEV 815	<b>D</b>	TDZE 815
----------	----------	----------



CATEGORY	A	B	C	D
LPV DA		1015/18	200 (200-1/2)	
LNAV/VNAV DA		1237/40	422 (500-3/4)	
LNAV MDA	1320/24	505 (600-1/2)	1320/55	505 (600-1)
TDZL/RCLS Rwy 10R-28L HIRL Rwy 10R-28L and 10L-28R			1520-2 705 (800-2)	1520-2 1/4 705 (800-2 1/4)
<b>CIRCLING</b>	1340-1	525 (600-1)		

COLUMBUS, OHIO  
Amdt 4 22APR21

40°00'N-82°54'W

# JOHN GLENN COLUMBUS INTL (CMH) RNAV (GPS) Y RWY 28L