

COLUMBUS, OHIO

AL-94 (FAA)

25163


WAAS CH 99603 W10A	APP CRS 101°	Rwy Ldg TDZE Apt Elev	10114 809 815
--	------------------------	-----------------------------	--

RNAV (GPS) Y RWY 10R

JOHN GLENN COLUMBUS INTL (CMH)

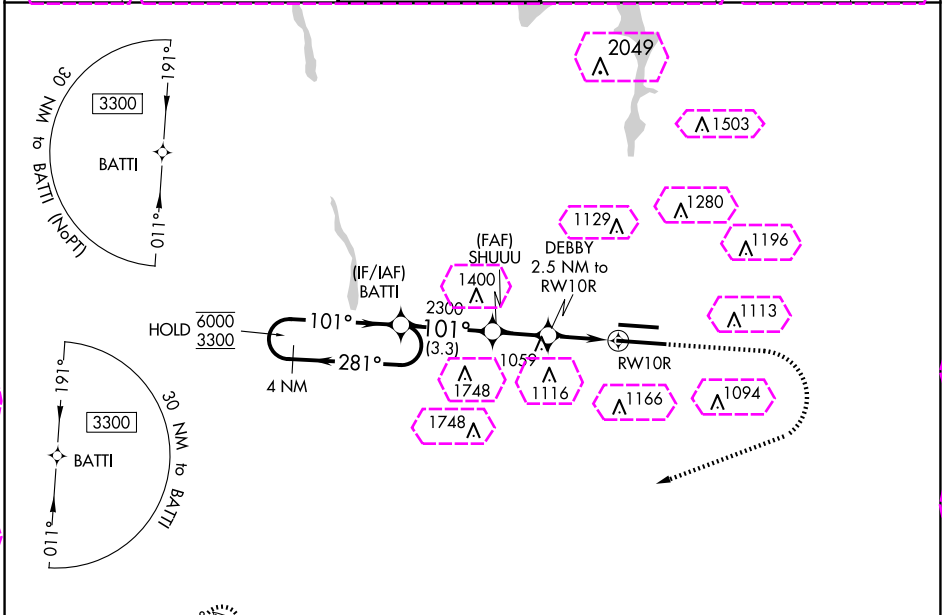
RNP APCH.

⚠ For uncompensated Baro-VNAV systems, LNAV/VNAV NA below -19°C or above 54°C. LNAV procedure NA during simultaneous operations. Use of FD or AP providing RNAV track guidance required during simultaneous operations. For inop ALS, increase LNAV Cat C/D visibility to 1 3/8 SM. Simultaneous approach authorized.

MALSR 

MISSED APPROACH: Climb to 1400 then climbing right turn to 3000 direct BU LOM and hold.

D-ATIS 124.6	COLUMBUS APP CON 125.95 371.975	COLUMBUS TOWER 132.7 257.8	GND CON 121.9 348.6	CLNC DEL 126.3	CPDLC
------------------------	---	--------------------------------------	-------------------------------	--------------------------	-------

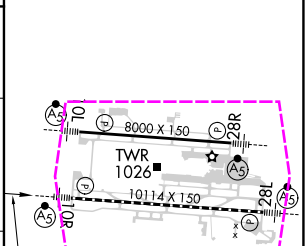
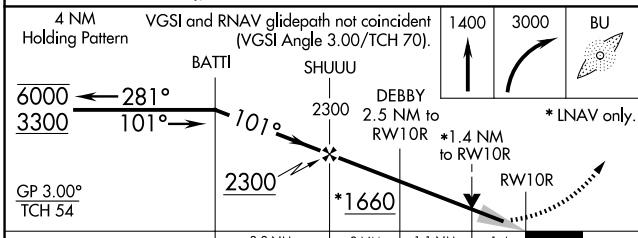


EC-2, 30 OCT 2025 to 27 NOV 2025

EC-2, 30 OCT 2025 to 27 NOV 2025



ELEV 815	D TDZE 809
----------	-------------------



CATEGORY	A	B	C	D
LPV DA		1009/18	200 (200-1/2)	
LNAV/VNAV DA		1194/35	385 (400-5/8)	
LNAV MDA	1320/24	511 (600-1/2)	1320/55	511 (600-1)
CIRCLING	1340-1	525 (600-1)	1520-2 705 (800-2)	1520-2 1/4 705 (800-2 1/4)

TOZ/CL RWY 10R-28L
HIRL Rwy's 10R-28L and 10L-28R

COLUMBUS, OHIO
Amdt 4 22APR21

40°00'N-82°54'W

RNAV (GPS) Y RWY 10R

COLUMBUS, OHIO

AL-94 (FAA)

25331

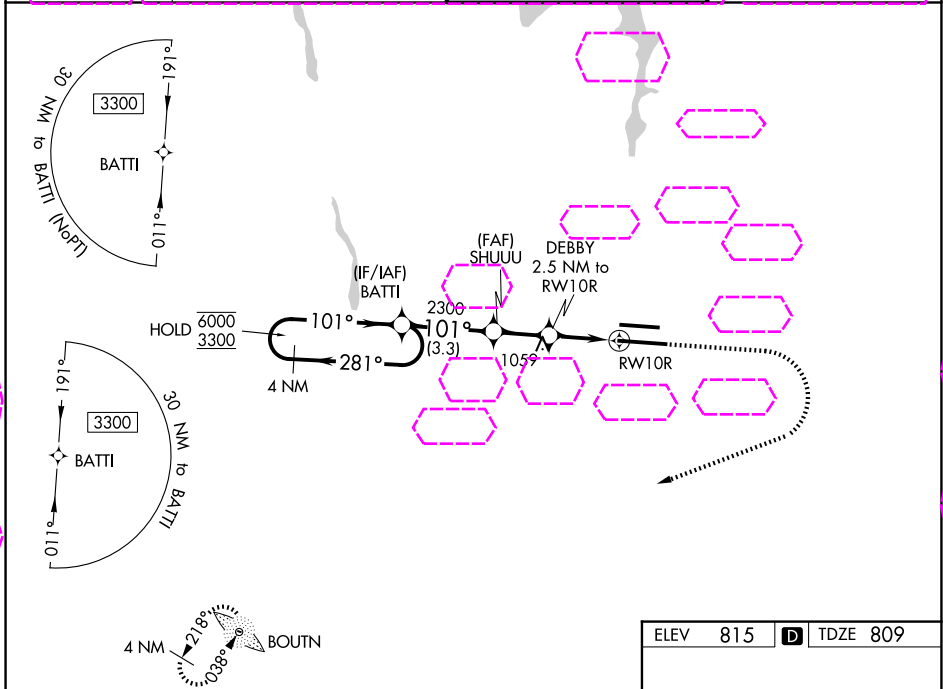
WAAS CH 99603 W10A	APP CRS 101°	Rwy Ldg TDZE Apt Elev	10114 809 815
--	------------------------	-----------------------------	--

RNAV (GPS) Y RWY 10R

JOHN GLENN COLUMBUS INTL (CMH)

RNP APCH.	MALSR 	MISSED APPROACH: Climb to 1400 then climbing right turn to 3000 direct BU LOM and hold.
<p>▼ For uncompensated Baro-VNAV systems, LNAV/VNAV NA below -19°C or above 54°C. RNAV procedure NA during simultaneous operations. Use of FD or AP providing RNAV track guidance required during simultaneous operations. For inop ALS, increase LNAV Cat C/D visibility to 1 3/8 SM. Simultaneous approach authorized.</p>		

D-ATIS 124.6	COLUMBUS APP CON 125.95 371.975	COLUMBUS TOWER 132.7 257.8	GND CON 121.9 348.6
------------------------	---	--------------------------------------	-------------------------------

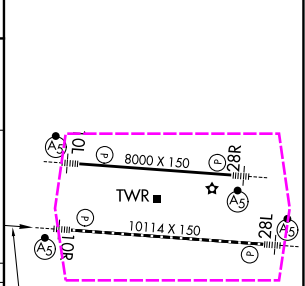


EC-2, 27 NOV 2025 to 25 DEC 2025

EC-2, 27 NOV 2025 to 25 DEC 2025

4 NM Holding Pattern	VGSI and RNAV glidepath not coincident (VGSI Angle 3.00/TCH 70).	1400	3000	BU
6000 ← 281°	3300 → 101°	2300	DEBBY 2.5 NM to RWY 10R	*1.4 NM to RWY 10R
GP 3.00° TCH 54				
	3.3 NM	2 NM	1.1 NM	1.4 NM

ELEV 815	D TDZE 809
----------	-------------------



CATEGORY	A	B	C	D
LPV DA		1009/18	200 (200-1/2)	
LNAV/VNAV DA		1194/35	385 (400-5/8)	
LNAV MDA	1320/24	511 (600-1/2)	1320/55	511 (600-1)
CIRCLING	1340-1	525 (600-1)	1520-2 705 (800-2)	1520-2 1/4 705 (800-2 1/4)

TOTL/RCLS Rwy 10R-28L	HIRL Rwy 10R-28L and 10L-28R
-----------------------	------------------------------

COLUMBUS, OHIO
Amdt 4 22APR21

40°00'N-82°54'W

RNAV (GPS) Y RWY 10R